

WCC-A SERIES - ALUMINUM CONDUIT WELL CAPS

Boshart's aluminum well caps are designed to go over the top of a well casing. They provide a cover for the well to prevent debris from entering. Crafted from durable aluminum, this one-piece conduit well cap is designed with extra clearance for submersible pump cables and features three stainless steel set screws to secure the cap to the casing, plus one stainless steel screw for mounting the conduit pipe.

With its corrosion-resistant hardware, simplified installation and sturdy aluminum body, they offer a professional grade cap for well systems where durable, worry-free protection and pump cable clearance are needed.

FEATURES:

- Heavy Duty design for added durability
- For steel or PVC well casings
- Well log provided inside each cap to record installation data and specifications
- 1" Conduit fits conduit or pipe manufactured IPS (Iron Pipe Size) with 1.315" OD
- Designed with name plate mounting bosses for personalization with name plates
- There is an annular space around the circumference, as well as three raised air gap pads inside the cover to ensure that there is an air gap to allow the well to breathe

SPECIFICATIONS:

- Material: A380 grade Aluminum as per requirement of ASTM B179-06 for Aluminum Alloys in Ingot and Molten Forms for Casting from All Casting Processes
- Conduit Connection fits 1" plain end 1.315" OD conduit pipe
- Standard series WCC-A has four 5/16-18 UNC x 1/2" long SS socket set screws included
- Screw thread complies to ANSI/ASME B18.2.1 Square, Hex, Heavy Hex, and Askew Head Bolts and Hex, Heavy Hex Flange, Lobed Head, and Lag Screws (Inch Series)
- ASSE Standard #1093-2019-WSC Standard PAS-97 Performance Requirement for Pitless Adapters, Pitless Units and Well Caps

WARNINGS:

- One piece conduit well caps are not considered sanitary well caps and may not meet code in your area.
- It is the sole responsibility of the system designer and user to make sure that the products used meet or exceed all national and or local well construction codes.



| WELL CAP SIZING | | | |
|---|-------------------------------------|-----------------------|---------------------------------|
| Nominal Well Casing Size Inside Diameter (I.D.) | Well Casing Outside Diameter (O.D.) | Nominal Well Cap Size | Well Cap Model Number Size Code |
| 4" | 4-1/2" | 4" | -04 |
| 4-1/2" | 5" | 4-1/2" | -045 |
| 5" | 5-9/16" | 5" | -05 |
| 5-5/8" | 6" | 5-5/8" | -056 |
| 6" | 6-5/8" | 6" | -06 |
| 6-5/8" | 7" | 6-5/8" | -066 |
| 8" | 8-5/8" | 8" | -08 |
| 10" | 10-3/4" | 10" | -10 |

NOTE: The well casing size is controlled by the I.D.

When ordering, it is critical to know the outside diameter of the well casing, to determine the proper size well cap. To ensure you order the correct size well cap, you must measure across the top of the casing, through the center line, from outside edge to outside edge, to determine the maximum distance across the top of the casing.

User Responsibility Statement: It is the user's sole responsibility to determine the product's suitability for its intended use. For full details, visit Boshart Industries [Reference Documents](#) for our User Safety Responsibility Statement and other important documents.

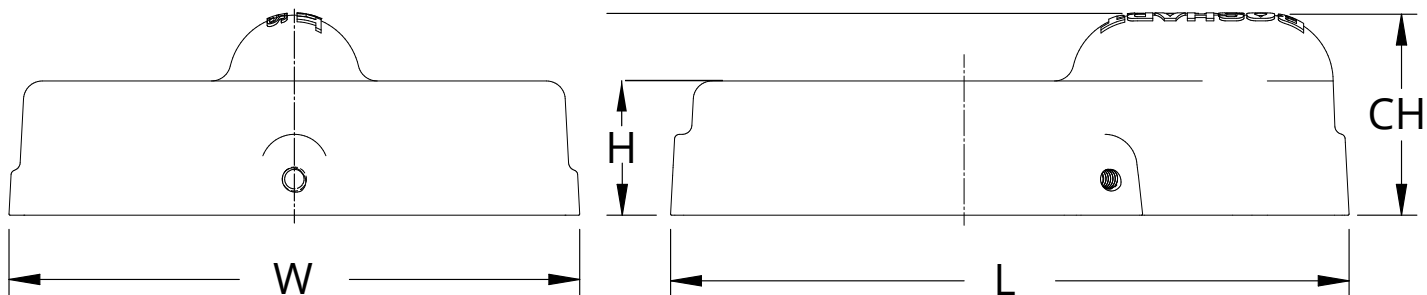
BOSHART
INDUSTRIES

25 Whaley Avenue, PO Box 310, Milverton, ON CANADA N0K 1M0
Tel: 800-561-3164

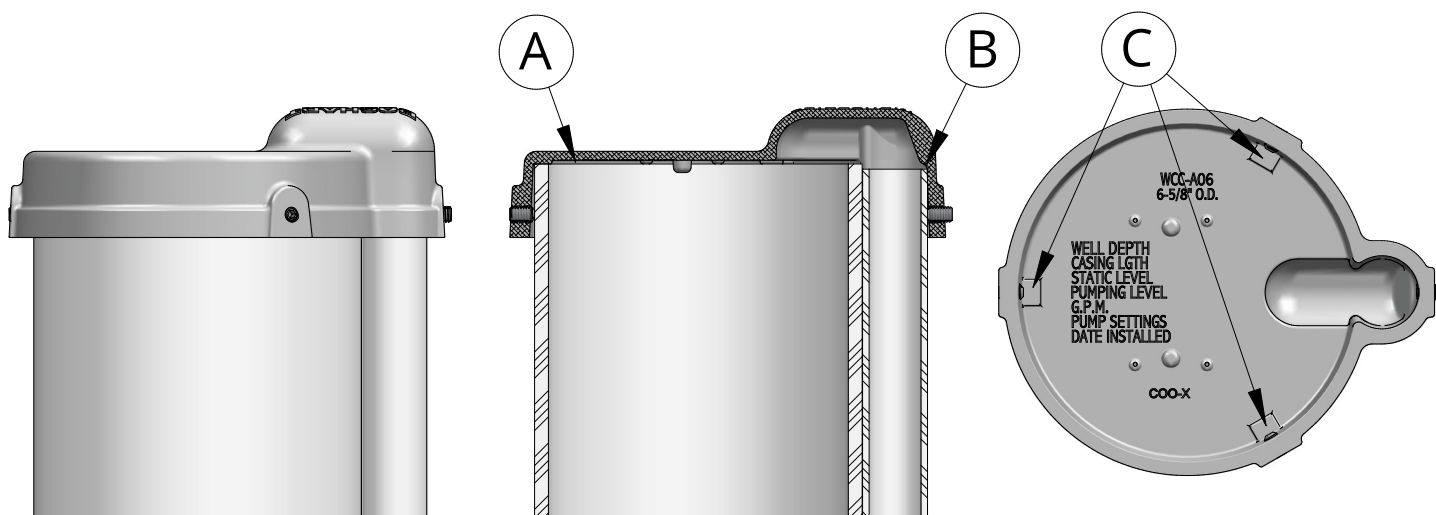
VISIT US ONLINE AT BOSHART.COM

For more information on installation, adjustment, repair & operation, visit Boshart Knowledge Base at SUPPORT.BOSHART.COM





| CONDUIT WELL CAPS | |
|-------------------|---------------------|
| Part No. | Description |
| A | Air Gap |
| B | Conduit Stop |
| C | Raised Air Gap Pads |



| DIMENSIONS | | | | | | | | | | |
|------------|--|--|---------------------|--------|--------------|--------|---------------|-------|------------------------|-------|
| Part No. | Fits Nominal Well Casing Size (I.D.) | Fits Well Casing Size (O.D.) | L (Total Length) | | W (Width) | | H (Height) | | CH (Conduit Height) | |
| | | | in | mm | in | mm | in | mm | in | mm |
| WCC-A04 | 4" | 4-1/2" | 6.69 | 169.93 | 4.72 | 119.89 | 1.74 | 44.20 | 2.60 | 66.04 |
| WCC-A045 | 4-1/2" | 5" | 7.16 | 181.86 | 5.24 | 133.10 | | | | |
| WCC-A05 | 5" | 5-9/16" | 7.72 | 196.09 | 5.80 | 147.32 | | | | |
| WCC-A056 | 5-5/8" | 6" | 8.16 | 207.26 | 6.24 | 158.50 | | | | |
| WCC-A06 | 6" | 6-5/8" | 8.78 | 223.01 | 6.86 | 174.24 | | | | |
| WCC-A066 | 6-5/8" | 7" | 9.19 | 233.43 | 7.24 | 183.90 | | | | |
| WCC-A08 | 8" | 8-5/8" | 10.78 | 273.81 | 8.86 | 225.04 | | | | |
| WCC-A10 | 10" | 10-3/4" | 12.91 | 327.91 | 10.99 | 279.15 | | | | |

BOSHART
INDUSTRIES

25 Whaley Avenue, PO Box 310, Milverton, ON CANADA N0K 1M0
Tel: 800-561-3164

VISIT US ONLINE AT BOSHART.COM

For more information on installation, adjustment, repair & operation, visit Boshart Knowledge Base at SUPPORT.BOSHART.COM

