

PS02MD SERIES - MEDIUM DUTY PRESSURE SWITCH

Installation wiring of pressure switches should be done by a qualified electrician. Wiring should be sealed using proper conduit connectors to prevent bugs and/ or foreign debris from entering into the pressure switch, which could result in a fire hazard. It is the sole responsibility of the end user to determine the product's suitability for it's intended use. For full details, visit Boshart Industries [Reference Documents](#) for our User Safety Responsibility Statement and other important documents.

APPLICATION (Applicable to all types of Medium Duty Pressure Switches):

- Designed for the control of electrically driven water pumps.
- Used to directly control 2 or 3 HP submersible or jet pumps depending on the pump's voltage (see electrical chart).
- Can also be used as pilot switches to send a signal to a magnetic contactor to control 3 HP and higher pumps (Not for Low Pressure Cut-Off).
- Reacts to changes in the water system to start (cut-in) and stop (cut-out) settings of the pressure switch.

FEATURES:

- Diaphragm actuated.

SPECIFICATIONS:

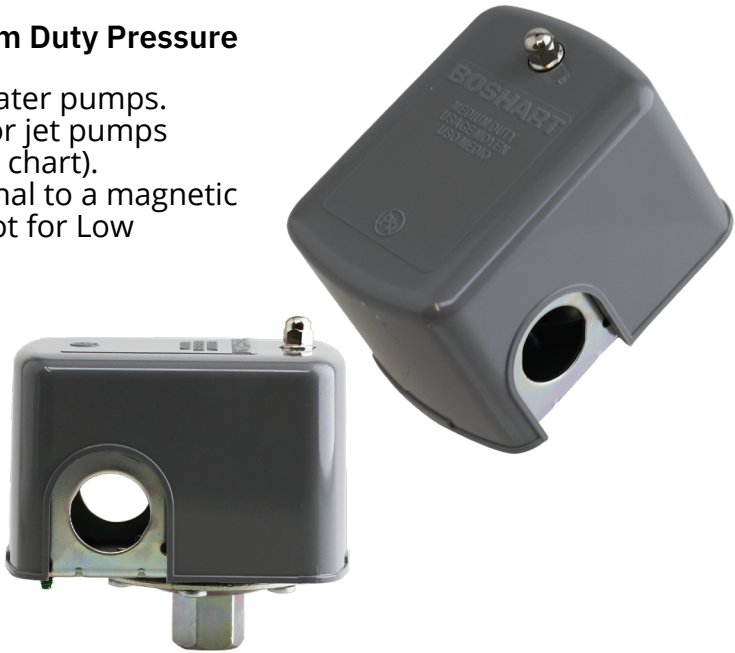
- Switches can be field adjusted to any desired range, however, they must fall within the 3 parameters in the Allowable Pressure Range Adjustment chart below.
- Terminal blocks are designed for use with up to #10 AWG cable.

CERTIFICATIONS:

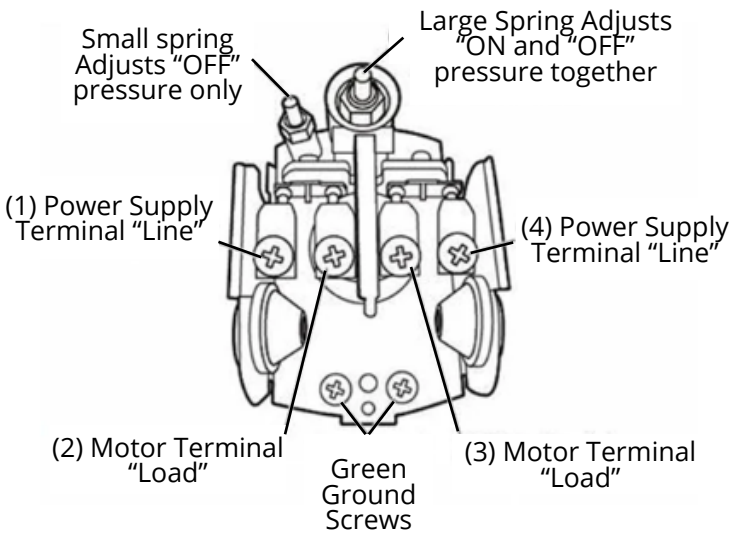
- NSF/ANSI Standard 61 Certified (Drinking Water System Components - Health Effects)
- NSF/ANSI Standard 372 Certified (Drinking Water System Components - Lead Content)
- CSA Approved: File - 219315
 - CSA C22.2 No 14-18; (Industrial Control Equipment)
 - UL 508; (UL Standard for Saftey Industrial Control Equipment)

RATINGS:

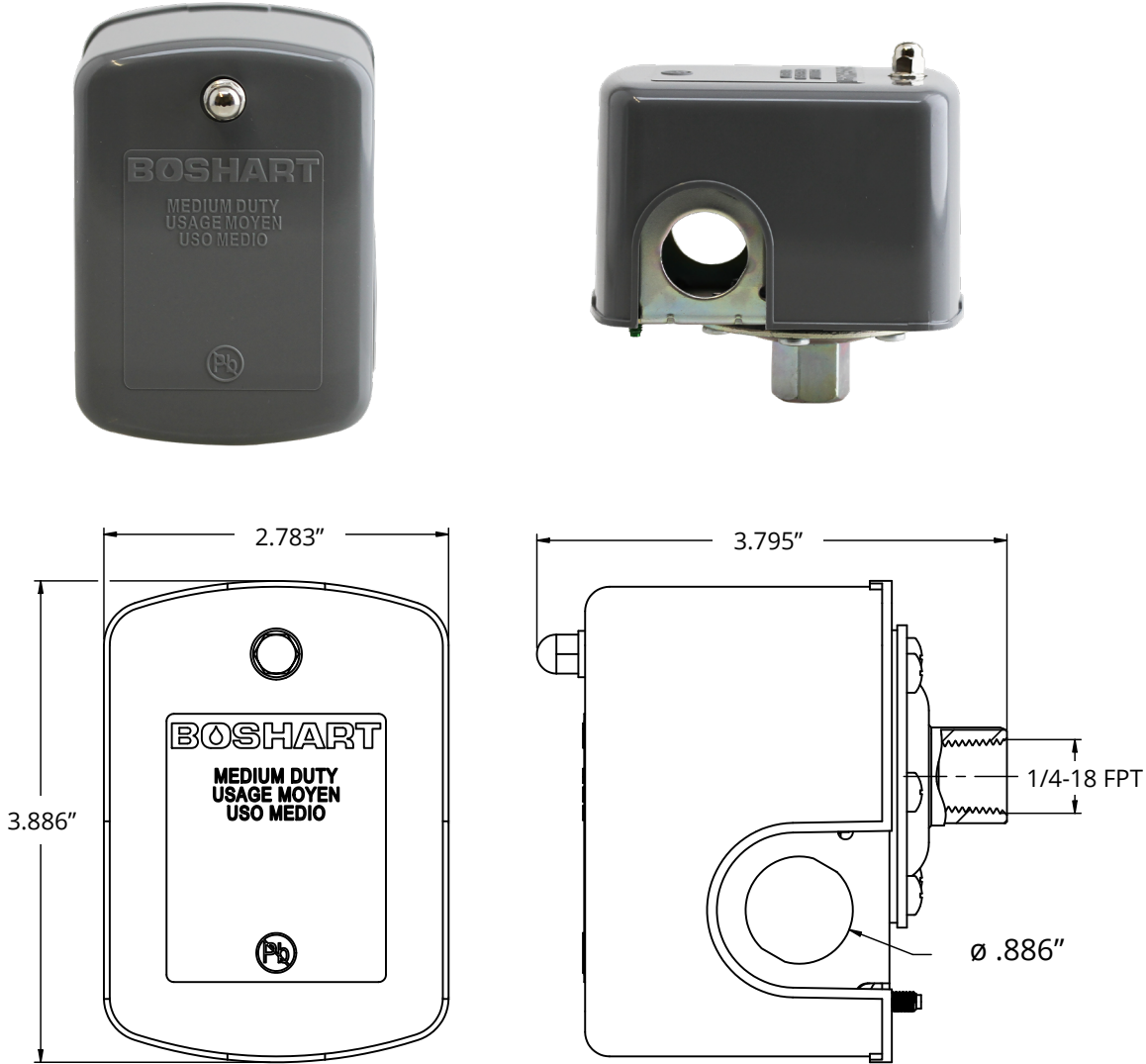
- Maximum Allowable Pressure: 220 PSI
- Maximum Temperature:
 - Media: -22°F to 257°F (-30°C to 125°C)
 - Ambient: -22°F to 158°F (-30°C to 70°C)



WIRING A PRESSURE SWITCH:



MEDIUM DUTY SERIES:



SPECIFICATIONS - MEDIUM DUTY									
Part No		Allowable Pressure Range Adjustment (PSI)			Electrical Ratings (2-POLE HP RATINGS)				Connection Type
	Factory Pressure Setting (PSI)	Cut In (PSI)	Cut Out (PSI)	Differential (PSI)	Volts	Single Phase	Direct Current	Amperage	
PS02MD-3050	30 - 50	10-45	25-65	15-30	115 230	2 HP 3 HP	0.5 HP 0.5 HP	24 A 17 A	1/4" FPT
PS02MD-4060	40 - 60	20-55	35-75						
PS02MD-5070	50 - 70	30-70	45-90						
PS02MD-6080	60 - 80								



25 Whaley Avenue, PO Box 310, Milverton, ON CANADA N0K 1M0
Tel: 800-561-3164

VISIT US ONLINE AT BOSHART.COM

For more information on installation, adjustment, repair & operation, visit Boshart Knowledge Base at SUPPORT.BOSHART.COM



BII-PS02MD-1125(3108)V2



25 Whaley Avenue, PO Box 310, Milverton, ON CANADA N0K 1M0
Tel: 800-561-3164

VISIT US ONLINE AT BOSHART.COM

For more information on installation, adjustment, repair & operation, visit Boshart Knowledge Base at SUPPORT.BOSHART.COM

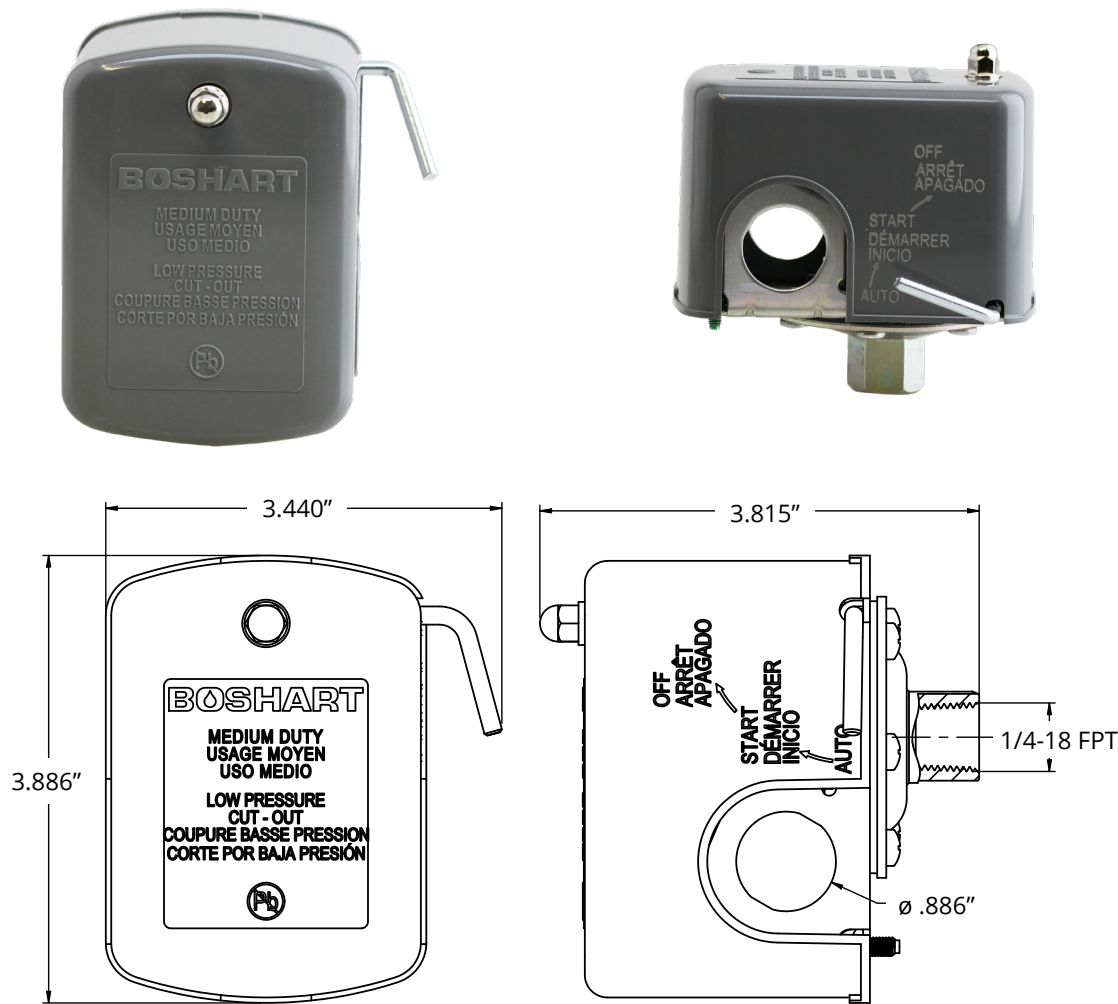


BII-PS02MD-1125(3108)V2

MEDIUM DUTY LOW PRESSURE CUT-OFF SERIES:

SPECIAL APPLICATION:

- The low pressure cut-off is a safety mechanism designed to protect your pump if the system pressure drops about 10 PSI below the cut-in pressure. If this happens the system will require a manual re-start. This can be the result of the water level dropping below the pump intake, a system leak or the pump is unable to keep up with demand.



SPECIFICATIONS - MEDIUM DUTY LOW PRESSURE CUT-OFF									
Part No	Factory Pressure Setting (PSI)	Allowable Pressure Range Adjustment (PSI)			Electrical Ratings (2-POLE HP RATINGS)				Connection Type
		Cut In (PSI)	Cut Out (PSI)	Differential (PSI)	Volts	Single Phase	Direct Current	Amperage	
PS02MDLP-3050	30 - 50	10-45	25-65	15-30	115 230	2 HP 3 HP	~	24 A 17 A	1/4" FPT
PS02MDLP-4060	40 - 60	20-55	35-75						
PS02MDLP-6080	60 - 80	30-70	45-90						

BOSHART INDUSTRIES 25 Whaley Avenue, PO Box 310, Milverton, ON CANADA N0K 1M0
Tel: 800-561-3164

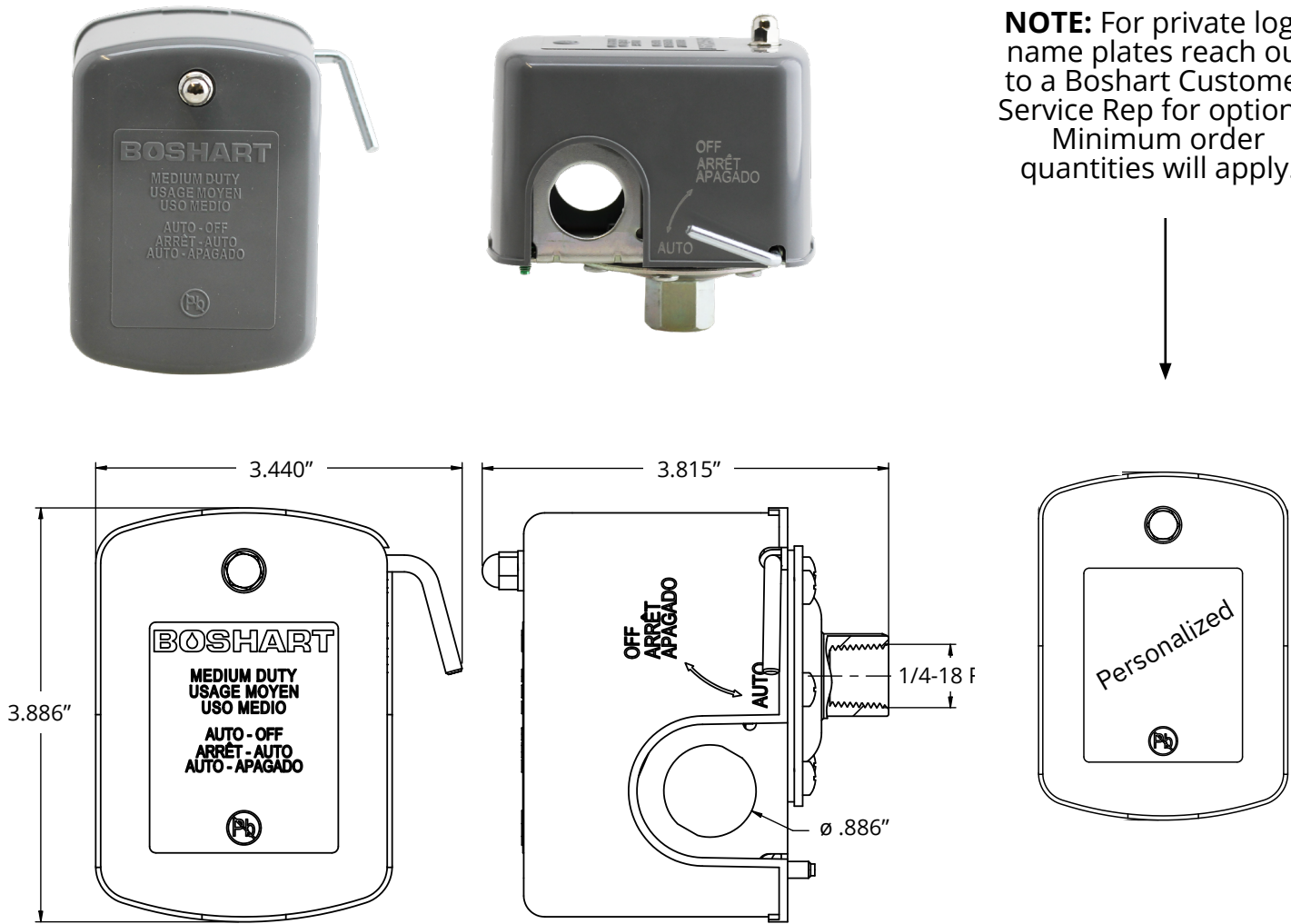
VISIT US ONLINE AT BOSHART.COM



MEDIUM DUTY AUTO/MANUAL OFF SERIES:

SPECIAL APPLICATION:

- AUTO-OFF switches have a lever with two positions; #1 OFF and #2 automatic operation between the cut-in and cut-out set points.



SPECIFICATIONS - MEDIUM DUTY AUTO/MANUAL CUT-OFF									
Part No	Factory Pressure Setting (PSI)	Allowable Pressure Range Adjustment (PSI)			Electrical Ratings (2-POLE HP RATINGS)				Connection Type
		Cut In (PSI)	Cut Out (PSI)	Differential (PSI)	Volts	Single Phase	Direct Current	Amperage	
PS02MDAO-3050	30 - 50	10-45	25-65	15-30	115 230	2 HP 3 HP	0.25 HP 0.25 HP	24 A 17 A	1/4" FPT
PS02MDAO-4060	40 - 60	20-55	35-75						

BOSHART INDUSTRIES 25 Whaley Avenue, PO Box 310, Milverton, ON CANADA N0K 1M0
Tel: 800-561-3164

VISIT US ONLINE AT BOSHART.COM

