

BC-NL SERIES - NO LEAD BRASS COMPRESSION FITTINGS

APPLICATIONS:

- Applicable for use with copper, brass, aluminum, plastic, CPVC, and PEX tubing. Plastic tubing requires use of an insert. Not recommended for steel tubing.
- Suitable for use in low to medium pressure applications including grease, oil, potable and non-potable water, vacuum, and air lines within the operating temperature range. Not recommended for gaseous media.
- The use of long nuts in applications where vibrations exist is recommended for extra resistance.
- **Not for use in direct burial applications.**

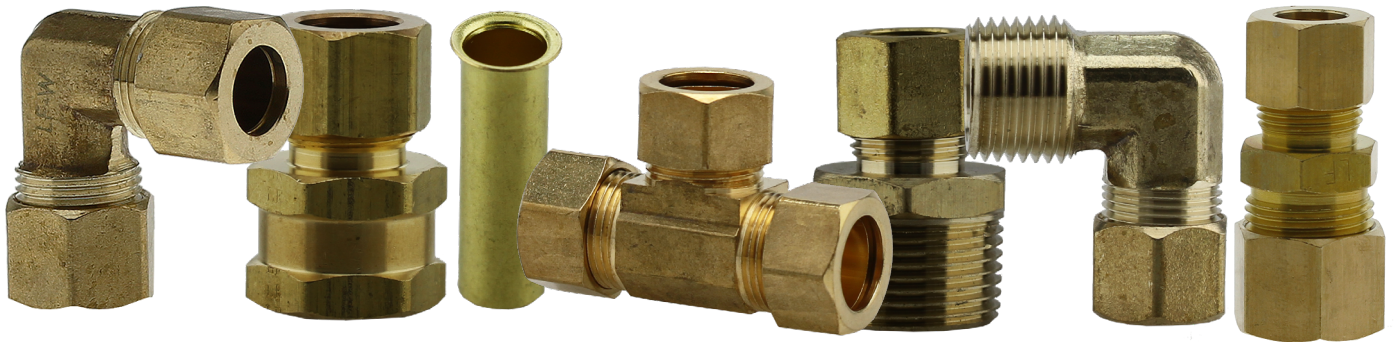
WARNING: Do not use compression fittings for gas connections of any kind including natural gas (NG) and liquid propane (LP). For non-potable water applications refer to Boshart's part series BC (Brass Compression Fittings).

SPECIFICATIONS:

- Made from C69300 lead free brass
- Pipe threads conform to ANSI/ASME B1.20.1 (Standard Specification for Pipe Threads, General Purpose, Inch)
- Screw threads conform to ANSI/ASME B1.1 (Standard Specification for Unified Inch Screw Threads)
- Operating temperature range: -65-250 °F (-54-121 °C)
- The maximum working pressure and temperature of the tubing used must be taken into consideration as it may be the limiting factor of the system. Always refer to the tubing specifications from the manufacturer.

CERTIFICATION:

- NSF/ANSI Standard 372 Certified (Drinking Water System Components - Lead Content)



Working Pressure of Brass Compression Fittings at 73 °F (22.7 °C)

Tube OD	1/8"	3/16"	1/4"	5/16"	3/8"	7/16"	1/2"	5/8"	3/4"	7/8"
Thread Size-B	5/16-24	3/8-24	7/16-24	1/2-24	9/16-24	5/8-24	11/16-20	13/16-18	1-18	1-1/8-18
Working Pressure (PSI)	400	400	300	300	200	200	200	150	100	75

Working pressures in the chart above should be used as a guide only. The maximum working pressure and temperature of the tubing used must be taken into consideration as it may be the limiting factor of the system. Always refer to the tubing specifications from the manufacturer.

Always refer to and install all compression fittings in accordance with applicable national and local plumbing and building codes. It is the sole responsibility of the end user to ensure the product meets all codes and regulations for the application in which the product will be used.

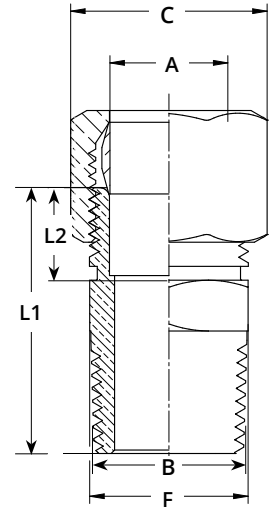


25 Whaley Avenue, PO Box 310, Milverton, ON CANADA N0K 1M0
Tel: 800-561-3164

boshart.com ♦ **blog.boshart.com**

MATERIAL COMPOSITION C69300 No Lead Brass		
ELEMENT	% of Composition	
Cu	73.0	77.0
Pb	0	0.09
Sn	0	0.20
Zn	0	Rem
Fe	0	0.10
P	0.04	0.15
Ni	0	0.10
Mn	0	0.10
Si	2.7	3.4

BC-68NL SERIES - COMP x MPT COUPLING



DIMENSIONS											
Part No.	Size (Comp x MPT) (A x B)	L1		L2		A		F		C	
		in	mm	in	mm	in	mm	in	mm	in	mm
BC-68-0402NL	1/4" x 1/8" MPT	0.965	21.97	0.312	7.92	0.255	6.48	0.437	11.11	0.500	12.70
BC-68-0404NL	1/4" x 1/4" MPT	0.939	23.85	0.312	7.92	0.255	6.48	0.562	14.28	0.500	12.70
BC-68-0406NL	1/4" x 3/8" MPT	1.030	26.16	0.315	8.00	0.255	6.48	0.687	17.46	0.500	12.70
BC-68-0408NL	1/4" x 1/2" MPT	1.060	26.92	0.305	7.75	0.255	6.48	0.875	22.22	0.500	12.70
BC-68-0604NL	3/8" x 1/4" MPT	1.000	25.40	0.370	9.40	0.382	9.70	0.562	14.28	0.625	15.88
BC-68-0606NL	3/8" x 3/8" MPT	1.060	26.92	0.360	9.14	0.382	9.70	0.687	17.46	0.625	15.88
BC-68-0608NL	3/8" x 1/2" MPT	1.150	29.21	0.360	9.14	0.382	9.70	0.875	22.22	0.625	15.88
BC-68-0612NL	3/8" x 3/4" MPT	1.220	31.00	0.362	9.20	0.382	9.70	1.063	26.99	0.625	15.88
BC-68-0806NL	1/2" x 3/8" MPT	1.140	28.96	0.400	10.16	0.507	12.88	0.687	17.46	0.750	19.05
BC-68-0808NL	1/2" x 1/2" MPT	1.193	30.30	0.400	10.16	0.507	12.88	0.875	22.22	0.750	19.05
BC-68-0812NL	1/2" x 3/4" MPT	1.260	32.00	0.402	10.20	0.507	12.88	1.063	26.99	0.750	19.05
BC-68-1008NL	5/8" x 1/2" MPT	1.235	31.37	0.413	10.50	0.632	16.05	0.875	22.22	0.875	22.22
BC-68-1012NL	5/8" x 3/4" MPT	1.315	33.40	0.445	11.30	0.632	16.05	1.063	26.99	0.875	22.22
BC-68-1412NL	7/8" x 3/4" MPT	1.300	33.02	0.425	10.80	0.883	22.42	1.125	28.58	1.250	31.75

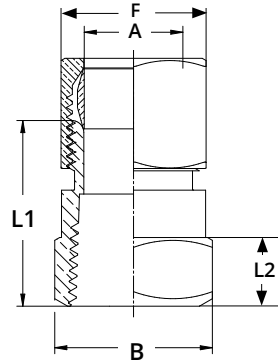
BOSHART
INDUSTRIES

25 Whaley Avenue, PO Box 310, Milverton, ON CANADA N0K 1M0
Tel: 800-561-3164

boshart.com ♦ blog.boshart.com

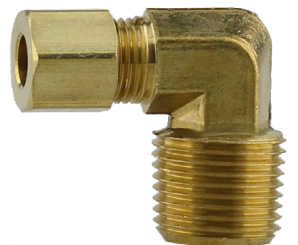
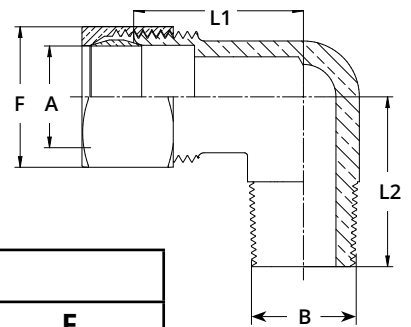
BC-66NL SERIES - COMP x FPT COUPLING

DIMENSIONS									
Part No.	Size (Comp x FPT) (A x B)	L1		L2		A		F	
		in	mm	in	mm	in	mm	in	mm
BC-66-0402NL	1/4" x 1/8" FPT	0.827	21.00	0.315	8.00	0.255	6.48	0.500	12.70
BC-66-0404NL	1/4" x 1/4" FPT	0.827	21.00	0.315	8.00	0.255	6.48	0.500	12.70
BC-66-0406NL	1/4" x 3/8" FPT	0.847	21.50	0.315	8.00	0.255	6.48	0.500	12.70
BC-66-0408NL	1/4" x 1/2" FPT	1.023	26.00	0.375	9.53	0.255	6.48	0.500	12.70
BC-66-0604NL	3/8" x 1/4" FPT	0.886	22.50	0.315	8.00	0.382	9.70	0.625	15.88
BC-66-0606NL	3/8" x 3/8" FPT	0.891	22.64	0.311	7.91	0.382	9.70	0.625	15.88
BC-66-0608NL	3/8" x 1/2" FPT	1.006	25.55	0.381	9.68	0.382	9.70	0.625	15.88
BC-66-0806NL	1/2" x 3/8" FPT	0.965	24.50	0.315	8.00	0.507	12.88	0.750	19.05
BC-66-0808NL	1/2" x 1/2" FPT	1.050	26.67	0.315	8.00	0.507	12.88	0.750	19.05
BC-66-1008NL	5/8" x 1/2" FPT	1.060	26.92	0.375	9.53	0.632	16.05	0.875	22.22
BC-66-1012NL	5/8" x 3/4" FPT	1.240	31.50	0.807	20.50	0.632	16.05	0.875	22.22
BC-66-1412NL	7/8" x 3/4" FPT	1.245	31.62	0.800	20.32	0.883	22.42	1.250	31.75



BC-69NL SERIES - COMP x MPT 90° ELBOW

DIMENSIONS									
Part No.	Size (Comp x MPT) (A x B)	L1		L2		A		F	
		in	mm	in	mm	in	mm	in	mm
BC-69-0402NL	1/4" x 1/8" MPT	0.605	15.37	0.737	18.72	0.255	6.48	0.500	12.70
BC-69-0404NL	1/4" x 1/4" MPT	0.625	15.88	0.858	21.80	0.255	6.48	0.500	12.70
BC-69-0406NL	1/4" x 3/8" MPT	0.685	17.40	0.925	23.50	0.255	6.48	0.500	12.70
BC-69-0604NL	3/8" x 1/4" MPT	0.732	18.60	0.827	21.00	0.382	9.70	0.625	15.88
BC-69-0606NL	3/8" x 3/8" MPT	0.807	20.50	0.925	23.50	0.382	9.70	0.625	15.88
BC-69-0608NL	3/8" x 1/2" MPT	0.906	23.00	1.118	28.40	0.382	9.70	0.625	15.88
BC-69-0806NL	1/2" x 3/8" MPT	0.880	22.35	1.020	25.91				
BC-69-0808NL	1/2" x 1/2" MPT	0.950	24.13	1.125	28.58	0.507	12.88	0.750	19.05
BC-69-1008NL	5/8" x 1/2" MPT	1.102	28.00	1.299	33.00	0.632	16.05	0.875	22.22

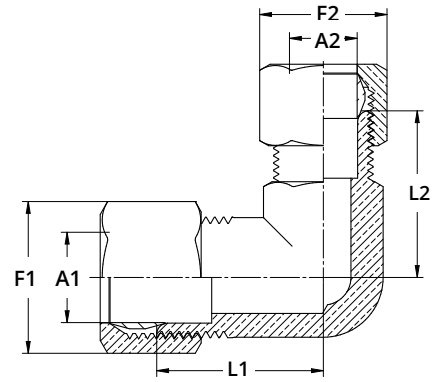


BOSHART
INDUSTRIES

25 Whaley Avenue, PO Box 310, Milverton, ON CANADA N0K 1M0
Tel: 800-561-3164

boshart.com ♦ blog.boshart.com

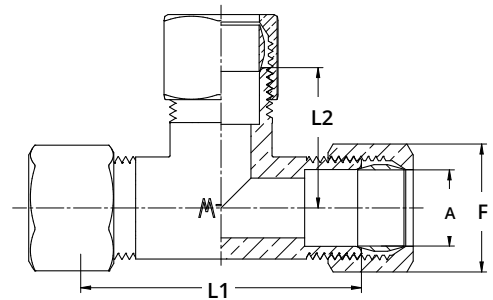
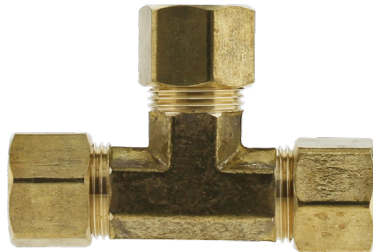
BC-65NL SERIES - COMP 90° ELBOW



DIMENSIONS

Part No.	Size (Comp x Comp) (A1 x A2)	L1		L2		A1		A2		F1		F2	
		in	mm	in	mm	in	mm	in	mm	in	mm	in	mm
BC-65-04NL	1/4" x 1/4"	0.595	15.11	0.595	15.11	0.255	6.48	0.255	6.48	0.500	12.70	0.500	12.70
BC-65-06NL	3/8" x 3/8"	0.735	18.67	0.735	18.67	0.382	9.70	0.382	9.70	0.625	15.88	0.625	15.88
BC-65-08NL	1/2" x 1/2"	0.921	23.40	0.921	23.40	0.507	12.88	0.507	12.88	0.750	19.05	0.750	19.05
BC-65-10NL	5/8" x 5/8"	1.047	26.59	1.047	26.59	0.632	16.05	0.632	16.05	0.875	22.22	0.875	22.22
BC-65-14NL	7/8" x 7/8"	1.380	35.05	1.380	35.05	0.883	22.42	0.883	22.42	1.250	31.75	1.250	31.75

BC-64NL SERIES - COMP TEE



DIMENSIONS

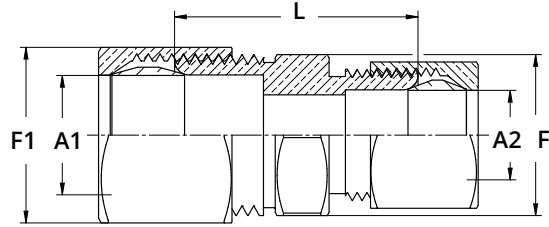
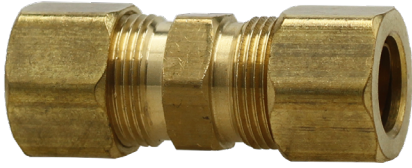
Part No.	Size (Comp) (A)	L1		L2		A		F	
		in	mm	in	mm	in	mm	in	mm
BC-64-04NL	1/4"	1.240	31.50	0.620	15.75	0.255	6.48	0.500	12.70
BC-64-06NL	3/8"	1.468	37.29	0.738	18.75	0.382	9.70	0.625	15.88
BC-64-08NL	1/2"	1.880	47.76	0.940	23.88	0.507	12.88	0.750	19.05
BC-64-10NL	5/8"	2.120	53.84	1.060	26.92	0.632	16.05	0.875	22.22
BC-64-14NL	7/8"	2.520	64.00	1.260	32.00	0.883	22.42	1.250	31.75

BOSHART
INDUSTRIES

25 Whaley Avenue, PO Box 310, Milverton, ON CANADA N0K 1M0
Tel: 800-561-3164

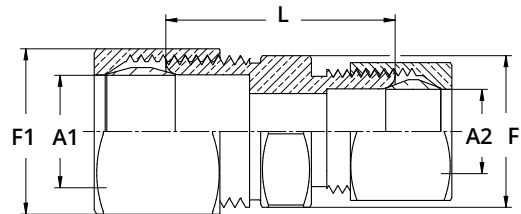
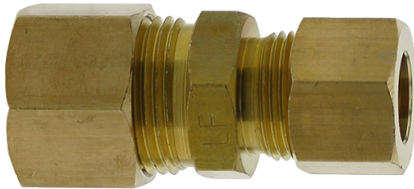
boshart.com ♦ blog.boshart.com

BC-62NL SERIES - COMP UNION COUPLING



DIMENSIONS											
Part No.	Size (Comp x Comp) (A1 X A2)	L		A1		A2		F1		F	
		in	mm	in	mm	in	mm	in	mm	in	mm
BC-62-04NL	1/4" x 1/4"	0.790	20.07	0.255	6.48	0.255	6.48	0.500	12.70	0.437	11.11
BC-62-06NL	3/8" x 3/8"	0.968	24.58	0.382	9.70	0.382	9.70	0.625	15.88	0.562	14.28
BC-62-08NL	1/2" x 1/2"	1.093	27.76	0.507	12.88	0.507	12.88	0.750	19.05	0.687	17.46
BC-62-10NL	5/8" x 5/8"	1.125	28.58	0.632	16.05	0.632	16.05	0.875	22.22	0.813	20.64
BC-62-14NL	7/8" x 7/8"	1.145	29.08	0.883	22.42	0.883	22.42	1.250	31.75	1.125	28.58

BC-62NL SERIES - COMP REDUING UNION COUPLING



DIMENSIONS											
Part No.	Size (Comp x Comp) (A1 x A2)	L		A1		A2		F1		F	
		in	mm	in	mm	in	mm				
BC-62R-0604NL	3/8" x 1/4"	0.895	22.73	0.382	9.70	0.255	6.48	0.625	15.88	0.562	14.28
BC-62R-0806NL	1/2" x 3/8"	1.035	26.29	0.507	12.88	0.382	9.70	0.750	19.05	0.687	17.46
BC-62R-1006NL	5/8" x 3/8"	1.035	26.29	0.632	16.05	0.382	9.70	0.875	22.22	0.813	20.64
BC-62R-1008NL	5/8" x 1/2"	1.045	26.54	0.632	16.05	0.507	12.88	0.875	22.22	0.813	20.64



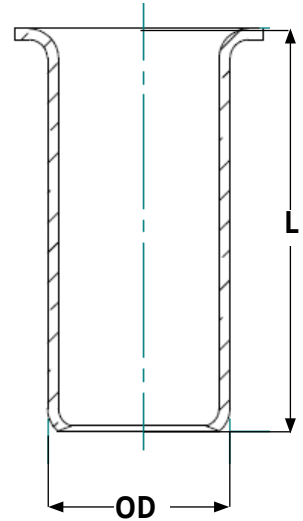
25 Whaley Avenue, PO Box 310, Milverton, ON CANADA N0K 1M0
Tel: 800-561-3164

boshart.com ♦ blog.boshart.com

BC-61PNL SERIES - COMPRESSION STIFFENER INSERT

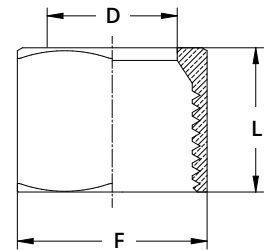
(For use with Poly tubing)

DIMENSIONS					
Part No.	Description	OD		L	
		in	mm	in	mm
BC-61P-02NL	1/8"	0.081	2.057	0.460	11.68
BC-61P-03NL	3/16"	0.137	3.480	0.450	11.43
BC-61P-04NL	1/4"	0.164	4.166	0.500	12.70
BC-61P-05NL	5/16"	0.188	4.780	0.520	13.21
BC-61P-06NL	3/8"	0.250	6.350	0.550	13.97
BC-61P-08NL	1/2"	0.370	9.398	0.725	18.42
BC-61P-10NL	5/8"	0.485	12.32	0.900	22.86



BC-61 SERIES - COMPRESSION NUT

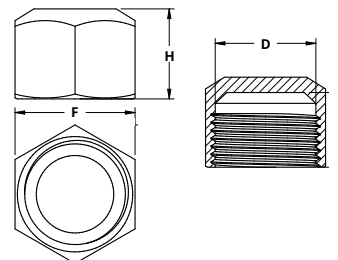
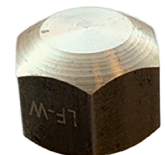
DIMENSIONS							
Part No.	Size	L		F		D	
		in	mm	in	mm	in	mm
BC-61-03	3/16"	0.410	10.41	0.437	11.11	0.187	4.76
BC-61-04	1/4"	0.437	11.10	0.500	12.70	0.250	6.35
BC-61-05	5/16"	0.440	11.18	0.562	14.28	0.313	7.94
BC-61-06	3/8"	0.460	11.68	0.625	15.88	0.375	9.52
BC-61-08	1/2"	0.562	14.27	0.750	19.05	0.500	12.70
BC-61-10	5/8"	0.563	14.30	0.875	22.22	0.625	15.88
BC-61-12	3/4"	0.688	17.48	1.125	28.58	0.750	19.05
BC-61-14	7/8"	0.620	15.75	1.250	31.75	0.875	22.22



BC-61CPNL SERIES - BRASS COMPRESSION CAP

No Lead

DIMENSIONS									
Part No.	Size	L (height)		F (flat to flat)		D (diameter)		Weight	
		in	mm	in	mm	in	mm	lb	g
BC-61CP-04NL	1/4"	0.44	11.1	0.50	12.7	0.40	10.1	0.013	6
BC-61CP-06NL	3/8"	0.46	11.6	0.63	15.9	0.52	13.3	0.018	8
BC-61CP-08NL	1/2"	0.57	14.4	0.75	19.1	0.64	16.2	0.031	14
BC-61CP-10NL	5/8"	0.56	14.3	0.87	22.2	0.76	19.3	0.038	17



BOSHART
INDUSTRIES

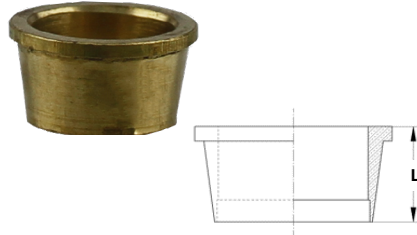
25 Whaley Avenue, PO Box 310, Milverton, ON CANADA N0K 1M0
Tel: 800-561-3164

boshart.com ♦ blog.boshart.com

BC-260 SERIES - BRASS COMPRESSION 'IN-LINE' SLEEVE

RECOMMENDED FOR NYLON TUBING (Made from CA360 Brass)

DIMENSIONS			
Part No.	Size	L	
		in	mm
BC-260-04	1/4"	0.22	5.59
BC-260-06	3/8"	0.26	6.60
BC-260-08	1/2"	0.35	8.89



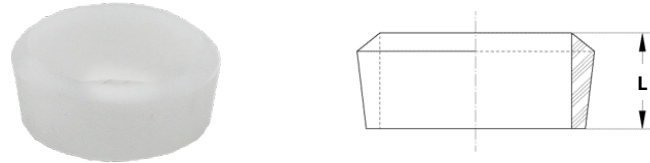
CA360 Brass Alloy Composition	
Element	% min/max
Cu	60.0 - 63.0
Pb	2.5 - 3.0
Zn	Rem
Fe	0.35 max

**BC-260 series In-line Sleeve is used in conjunction with a BC-61 Series compression nut. This sleeve can only go into the fitting body in one direction, the smaller end of the taper faces toward the fitting body when installed. Commonly used with nylon tube to maintain positioning on tube more effectively than plastic sleeves.

BC-60P SERIES - PLASTIC (ACETAL) COMPRESSION SLEEVE

RECOMMENDED FOR POLY & PEX TUBING

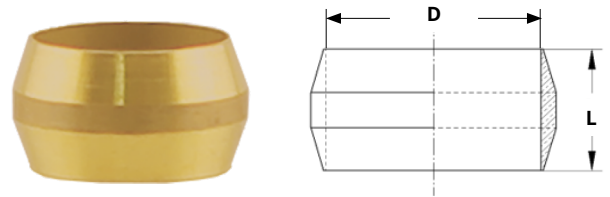
DIMENSIONS			
Part No.	Size	L	
		in	mm
BC-60P-04	1/4"	0.20	5.08
BC-60P-05	5/16"	0.19	4.83
BC-60P-06	3/8"	0.22	5.59
BC-60P-08	1/2"	0.27	6.86
BC-60P-10	5/8"	0.22	5.59



** BC-60P series is for use with poly tubing to provide less risk of damage to tubing. When using with poly tubing, use a BC-61P brass stiffener insert to provide support before making connection. This ensures the tubing wall will not collapse when the sleeve is compressed. Note the orientation of the BC-60P Plastic Sleeve when installing, the smaller end of the taper faces toward the fitting body.

BC-60 SERIES - STANDARD SLEEVE

DIMENSIONS					
Part No.	Size	L		D	
		in	mm	in	mm
BC-60-02	1/8"	0.19	4.83	0.130	3.30
BC-60-03	3/16"	0.22	5.59	0.192	4.88
BC-60-04	1/4"	0.25	6.35	0.255	6.48
BC-60-05	5/16"	0.25	6.35	0.318	8.08
BC-60-06	3/8"	0.25	6.35	0.382	9.70
BC-60-07	7/16"	0.31	7.87	0.444	11.28
BC-60-08	1/2"	0.31	7.87	0.507	12.88
BC-60-10	5/8"	0.32	8.13	0.632	16.05
BC-60-12	3/4"	0.44	11.2	0.758	19.25
BC-60-14	7/8"	0.41	10.4	0.883	22.42



**BC-60 series standard sleeve is suitable in low to medium pressure applications for gasoline, grease, oil, water vacuum and air lines. Applicable with copper, brass, aluminum, plastic, CPVC and PEX tubing. Sleeve can face either direction upon installation.

For more information on installation, adjustment, repair & operation, visit Boshart Knowledge Base at

SUPPORT.BOSHART.COM



BOSHART
INDUSTRIES

25 Whaley Avenue, PO Box 310, Milverton, ON CANADA N0K 1M0
Tel: 800-561-3164

boshart.com ♦ blog.boshart.com