

NO LEAD BRONZE INSERT FITTINGS

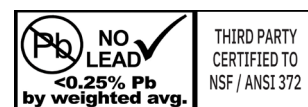
APPLICATIONS:

- For use with ASTM D2239 polyethylene (PE) plastic pipe (Standard Specification for Polyethylene (PE) Pipe (SIDR-PR) Based on Controlled Inside Diameter)
- Insert fittings are intended for cold water applications including irrigation, well service, and potable water applications. These products are not to be used with compressed gases.
- Fittings must be protected from freezing temperatures where fluid expansion due to freezing could occur.
- These fittings are designed to force the expansion or stretching of the PE pipe when the fitting is inserted. Due to the memory of the pipe it tries to return to its original manufactured diameter like an elastic band. When tightening the gear clamp this memory assists the clamp in forming the poly into the barb profiles and makes a positive seal with excellent pull off resistance.

Do not confuse insert fittings with hose fittings. The use of a hose fitting, which is manufactured with smaller barb diameters than poly (PE) pipe, will result in a leaking connection with very little or no pull off resistance!

SPECIFICATIONS:

- Made from no lead bronze (C89833 or C89844), >15% zinc content which makes these fittings impervious to dezincification corrosion
- Threads conform to ANSI/ASME B1.20.1
- System operating pressures and temperatures are limited by the maximum operating pressures and temperatures of the ASTM D2239 PE plastic pipe. Always refer to the PE pipe manufacturer's pressure and temperature ratings.



CERTIFICATION:

- NSF/ANSI Standard 372 Certified (Drinking Water System Components - Lead Content)



PRESSURE & TEMPERATURE RATINGS FOR BRONZE INSERT FITTINGS

Temperature		Pressure	
°F	°C	PSI	bar
73.4	23	400	27.6
150	65.5	200	13.8
200	93.3	190	13.1
250	121.1	180	12.4
300	148.8	165	11.4
350	176.6	150	10.3
400	204.4	125	8.6

Pressure rating charts should be used as a guide only. For pressures over the stated maximum or temperatures over 73.4 °F (23 °C), independent testing by the end user is recommended.

It is solely the user's responsibility to determine the suitability of the fitting for the intended service.

BOSHART
INDUSTRIES

25 Whaley Avenue, PO Box 310
Milverton, ON CANADA N0K 1M0
Tel: 800-561-3164

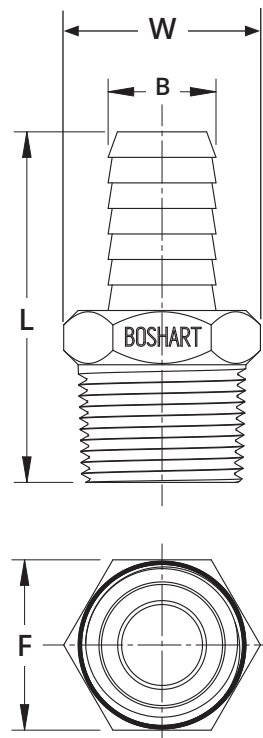
VISIT US ONLINE AT BOSHART.COM

For more information on installation, adjustment, repair & operation, visit Boshart Knowledge Base at SUPPORT.BOSHART.COM



BMA-NL SERIES - NL BRONZE ADAPTER

■ MPT x Poly Insert Barb



DIMENSIONS

Part No.	Size (MPT x Poly)	No. of Barbs	B (Barb Ø OD)		W		L		F (Flat to Flat)		Weight	
			in	mm	in	mm	in	mm	in	mm	lb	grams
BMA-050-075NL	1/2" x 3/4"	6	0.845	21.5	0.90	22.9	2.58	65.5	0.86	21.8	0.206	93.4
BMA-050NL	1/2" x 1/2"	5	0.645	16.4	0.88	22.4	2.56	65.0	0.86	21.8	0.163	73.9
BMA-075-050NL	3/4" x 1/2"	6	0.645	16.4	1.16	29.5	2.73	69.3	1.07	27.2	0.276	125.2
BMA-075-100NL	3/4" x 1"	7	1.075	27.3	1.20	30.5	2.86	72.6	1.34	34.0	0.279	126.5
BMA-075NL	3/4" x 3/4"	6	0.845	21.5	1.07	27.2	2.50	63.5	1.07	27.2	0.196	88.9
BMA-100-075NL	1" x 3/4"	6	0.845	21.5	1.37	34.8	2.90	73.7	1.34	34.0	0.403	182.8
BMA-100-125NL	1" x 1-1/4"	7	1.405	35.7	1.45	36.8	3.20	81.3	1.68	42.7	0.588	266.7
BMA-100-150NL	1" x 1-1/2"	7	1.645	41.8	1.70	43.2	3.26	82.8	1.68	42.7	0.700	317.5
BMA-100NL	1" x 1"	7	1.075	27.3	1.34	34.0	2.95	74.9	1.34	34.0	0.444	201.4
BMA-125-100NL	1-1/4" x 1"	7	1.075	27.3	1.68	42.7	3.18	80.8	1.68	42.7	0.586	265.8
BMA-125-150NL	1-1/4" x 1-1/2"	7	1.645	41.8	1.71	43.4	3.20	81.3	1.68	42.7	0.676	306.6
BMA-125NL	1-1/4" x 1-1/4"	7	1.405	35.7	1.67	42.4	3.24	82.3	1.68	42.7	0.657	298.0
BMA-150-125NL	1-1/2" x 1-1/4"	7	1.405	35.7	1.95	49.5	3.16	80.3	1.92	48.8	0.784	355.6
BMA-150NL	1-1/2" x 1-1/2"	7	1.645	41.8	1.94	49.3	3.20	81.3	1.92	48.8	0.823	373.3
BMA-200-150NL	2" x 1-1/2"	7	1.645	41.8	2.40	61.0	3.20	81.3	2.40	61.0	1.055	478.5
BMA-200NL	2" x 2"	7	2.105	53.5	2.44	62.0	3.20	81.3	2.40	61.0	1.166	528.9

BOSHART
INDUSTRIES

25 Whaley Avenue, PO Box 310
Milverton, ON CANADA N0K 1M0
Tel: 800-561-3164

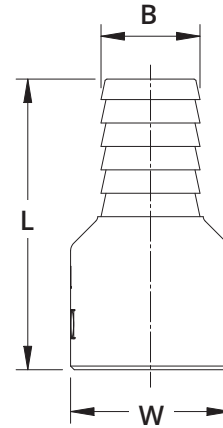
VISIT US ONLINE AT BOSHART.COM

For more information on installation,
adjustment, repair & operation, visit
Boshart Knowledge Base at
SUPPORT.BOSHART.COM



FA-NL SERIES - NL BRONZE ADAPTER

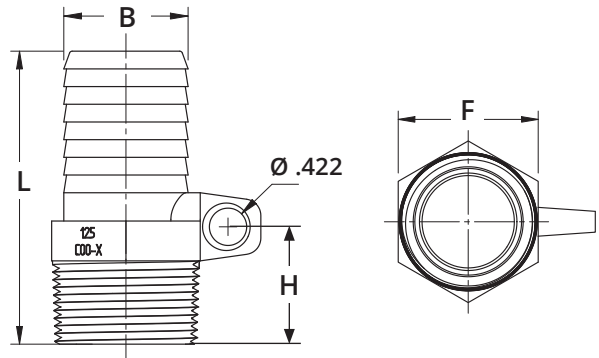
■ FPT x Poly Insert Barb



DIMENSIONS										
Part No.	Size (FPT x Poly)	No. of Barbs	B (Barb Ø OD)		W		L		Weight	
			in	mm	in	mm	in	mm	lb	grams
FA-075NL	3/4" x 3/4"	5	0.845	21.5	1.28	32.5	2.50	63.5	0.278	126.1
FA-100-125NL	1" x 1-1/4"	6	1.405	35.7	1.58	40.1	2.87	72.9	0.587	266.3
FA-100NL	1" x 1"	5	1.075	27.3	1.58	40.1	2.66	67.6	0.506	229.5
FA-125NL	1-1/4" x 1-1/4"	7	1.405	35.7	1.94	49.3	3.00	76.2	0.666	302.1
FA-150NL	1-1/2" x 1-1/2"	6	1.645	41.8	2.19	55.6	2.85	72.4	0.794	360.2
FA-200NL	2" x 2"	7	2.015	53.5	2.78	70.6	3.29	83.6	1.246	565.2

BMA-ETNL SERIES - NL BRONZE EASY TIE ADAPTER

■ MPT x Poly Insert Barb



DIMENSIONS												
Part No.	Size (MPTxPoly)	No. of Barbs	B (Barb Ø OD)		L		H		F		Weight	
			in	mm	in	mm	in	mm	in	mm	lb	grams
BMA-100-ETNL	1" x 1"	7	1.075	27.3	3.53	89.7	1.44	36.6	1.34	34.0	0.603	273.5
BMA-125-ETNL	1-1/4" x 1-1/4"	7	1.405	35.7	3.50	88.9	1.39	35.3	1.68	42.7	0.746	338.4
BMAXL-125-100ETNL	1-1/4" x 1"	13	1.075	27.3	4.65	118.1	1.34	34.0	1.68	42.7	0.834	378.3

BOSHART
INDUSTRIES

25 Whaley Avenue, PO Box 310
Milverton, ON CANADA N0K 1M0
Tel: 800-561-3164

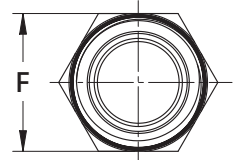
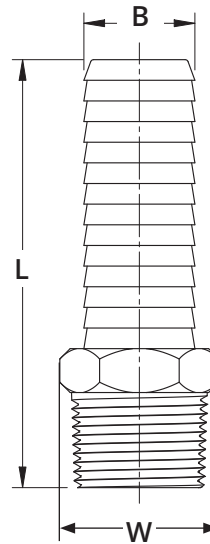
VISIT US ONLINE AT BOSHART.COM

For more information on installation,
adjustment, repair & operation, visit
Boshart Knowledge Base at
SUPPORT.BOSHART.COM



BMAXL-NL SERIES - NL BRONZE EXTRA LONG ADAPTER

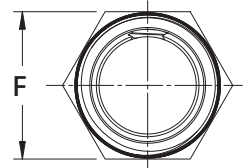
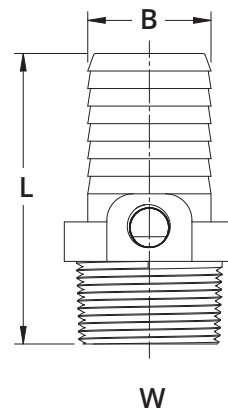
■ MPT x Poly Insert Barb



DIMENSIONS												
Part No.	Size (MPTxPoly)	No. of Barbs	B (Barb Ø OD)		W		L		F (Flat to Flat)		Weight	
			in	mm	in	mm	in	mm	in	mm	lb	grams
BMAXL-100NL	1" x 1"	13	1.075	27.3	1.36	34.5	4.48	113.8	1.34	34.0	0.641	290.8
BMAXL-125-100NL	1-1/4" x 1"	13	1.075	27.3	1.70	43.2	4.50	114.3	1.68	42.7	0.761	345.2
BMAXL-125NL	1-1/4" x 1-1/4"	13	1.405	35.7	1.70	43.2	4.53	115.1	1.68	42.7	0.685	310.7
BMAXL-150NL	1-1/2" x 1-1/2"	13	1.645	41.8	1.95	49.5	4.43	112.5	1.92	48.8	1.092	495.3
BMAXL-200NL	2" x 2"	13	2.105	53.5	2.40	61.0	4.40	111.8	2.40	61.0	1.503	681.7

BMA-TNL SERIES - NL BRONZE TAPPED ADAPTER

■ MPT x Poly Insert Barb



DIMENSIONS												
Part No.	Size (MPT x Poly)	No. of Barbs	B (Barb Ø OD)		W		L		F (Flat to Flat)		Weight	
			in	mm	in	mm	in	mm	in	mm	lb	grams
BMA-100-TNL	1" x 1"	7	1.075	27.3	1.35	34.3	2.92	74.2	1.34	34.0	0.432	196.0

BOSHART
INDUSTRIES

25 Whaley Avenue, PO Box 310
Milverton, ON CANADA N0K 1M0
Tel: 800-561-3164

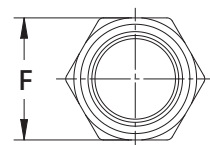
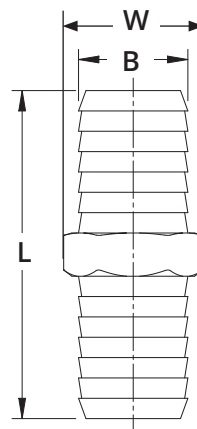
VISIT US ONLINE AT BOSHART.COM

For more information on installation,
adjustment, repair & operation, visit
Boshart Knowledge Base at
SUPPORT.BOSHART.COM



C-NL SERIES - NL BRONZE COUPLING

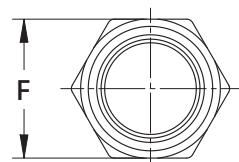
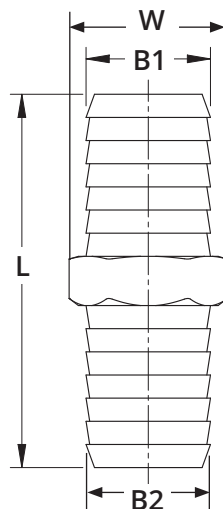
■ Poly Insert Barb x Poly Insert Barb



DIMENSIONS												
Part No.	Size (Poly x Poly)	No. of Barbs	B (Barb Ø OD)		W		L		F (Flat to Flat)		Weight	
			in	mm	in	mm	in	mm	in	mm	lb	grams
C-075NL	3/4" x 3/4"	4	0.845	21.5	0.95	24.1	2.83	71.9	0.97	24.7	0.219	99.3
C-100NL	1" x 1"	5	1.075	27.3	1.25	31.8	3.23	82.0	1.20	30.5	0.413	187.3
C-125NL	1-1/4" x 1-1/4"	6	1.405	35.7	1.53	38.9	3.65	92.7	1.53	38.9	0.663	300.7
C-150NL	1-1/2" x 1-1/2"	6	1.645	41.8	2.03	51.6	3.70	94.0	1.77	45.0	0.836	379.2
C-200NL	2" x 2"	6	2.105	53.5	2.56	65.0	3.70	94.0	2.23	56.6	1.162	527.1
CXL-200NL	2" x 2"	12	2.105	53.5	2.21	56.1	6.36	161.5	2.21	56.1	1.598	724.8

C-NL SERIES - NL BRONZE COUPLING

■ Poly Insert Barb x Poly Insert Barb



Part No.	Size (Poly x Poly)	No. of Barbs	B1 (Barb Ø OD)	
			in	mm
C-100-075NL	1" x 3/4"	6x5	1.075	27.3
C-125-100NL	1-1/4"x1"	6	1.405	35.7

DIMENSIONS												
Part No.	Size (Poly x Poly)	No. of Barbs	B2 (Barb Ø OD)		W		L		F (Flat to Flat)		Weight	
			in	mm	in	mm	in	mm	in	mm	lb	grams
C-100-075NL	1" x 3/4"	6x5	0.845	21.5	1.48	37.6	3.44	87.4	1.26	32.0	0.335	152.0
C-125-100NL	1-1/4"x1"	6	1.075	27.3	1.75	44.5	3.77	95.8	1.58	40.1	0.512	232.2

BOSHART
INDUSTRIES

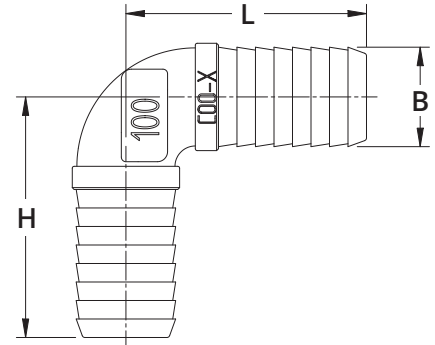
25 Whaley Avenue, PO Box 310
Milverton, ON CANADA N0K 1M0
Tel: 800-561-3164
VISIT US ONLINE AT BOSHART.COM

For more information on installation,
adjustment, repair & operation, visit
Boshart Knowledge Base at
SUPPORT.BOSHART.COM



ELB-NL SERIES - NL BRONZE 90° ELBOW

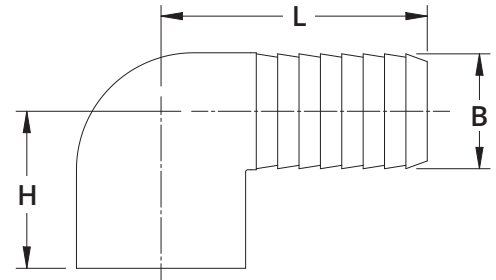
- Poly Insert Barb x Poly Insert Barb
- Smooth sweep channel minimizes friction loss ensuring high flow rates and pumping efficiency



DIMENSIONS										
Part No.	Size (Poly x Poly)	No. of Barbs	B (Barb Ø OD)		L		H		Weight	
			in	mm	in	mm	in	mm	lb	grams
ELB-075NL	3/4" x 3/4"	6	0.845	21.5	2.25	57.2	2.25	57.2	0.365	165.5
ELB-100NL	1" x 1"	6	1.075	27.3	2.60	66.0	2.60	66.0	0.610	276.7
ELB-125NL	1-1/4" x 1-1/4"	6	1.405	35.7	2.84	72.1	2.84	72.1	0.926	420.0

BFE-NL SERIES - NL BRONZE 90° ELBOW

- FPT x Poly Insert Barb
- Smooth sweep channel minimizes friction loss ensuring high flow rates and pumping efficiency



DIMENSIONS										
Part No.	Size (FPT x Poly)	No. of Barbs	B (Barb Ø OD)		L		H		Weight	
			in	mm	in	mm	in	mm	lb	grams
BFE-075NL	3/4" x 3/4"	6	0.845	21.5	2.14	54.4	1.21	30.7	0.334	151.5
BFE-100NL	1" x 1"	7	1.075	27.3	2.49	63.2	1.47	37.3	0.629	285.3
BFE-125NL	1-1/4" x 1-1/4"	7	1.405	35.7	2.67	67.8	1.65	41.9	0.924	419.1

BOSHART
INDUSTRIES

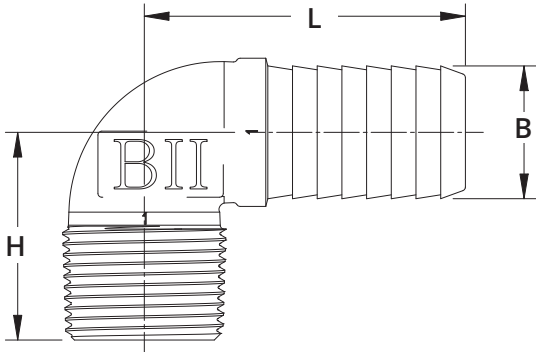
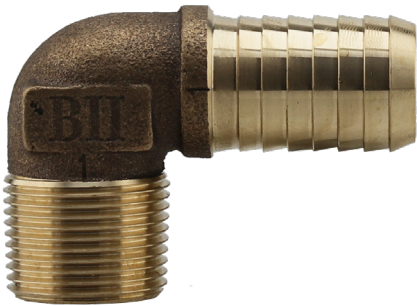
25 Whaley Avenue, PO Box 310
Milverton, ON CANADA N0K 1M0
Tel: 800-561-3164
VISIT US ONLINE AT BOSHART.COM

For more information on installation,
adjustment, repair & operation, visit
Boshart Knowledge Base at
SUPPORT.BOSHART.COM



BME-NL SERIES - NL BRONZE 90° ELBOW

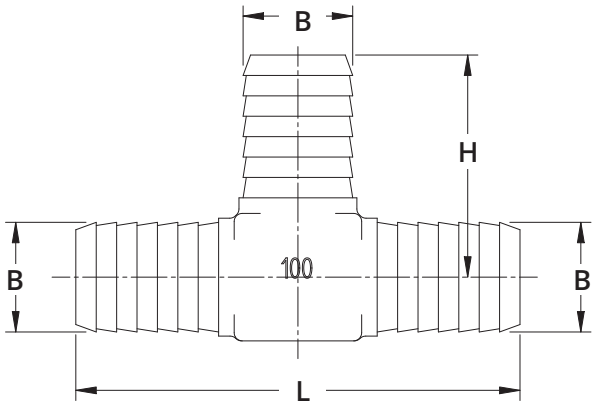
- MPT x Poly Insert Barb
- Smooth sweep channel minimizes friction loss ensuring high flow rates and pumping efficiency



DIMENSIONS										
Part No.	Size (MPT x Poly)	No. of Barbs	B (Barb Ø OD)		L		H		Weight	
			in	mm	in	mm	in	mm	lb	grams
BME-075-100NL	3/4" x 1"	7	1.075	27.8	2.23	56.6	1.48	37.6	0.388	176.0
BME-075NL	3/4" x 3/4"	6	0.845	21.5	2.08	52.8	1.46	37.1	0.252	114.3
BME-100NL	1" x 1"	7	1.075	27.3	2.36	59.9	1.68	42.7	0.494	224.1
BME-125NL	1-1/4" x 1-1/4"	7	1.405	35.7	2.53	64.3	1.94	49.3	0.784	355.6
BME-150NL	1-1/2" x 1-1/2"	7	1.645	41.8	2.65	67.3	2.04	51.8	0.995	451.3

TE-NL SERIES - NL BRONZE TEE

- Poly Insert Barb x Poly Insert Barb x Poly Insert Barb



DIMENSIONS										
Part No.	Size (Poly x Poly x Poly)	No. of Barbs	B (Barb Ø OD)		L		H		Weight	
			in	mm	in	mm	in	mm	lb	grams
TE-075NL	3/4" x 3/4" x 3/4"	5	0.845	21.5	3.84	97.5	1.92	48.8	0.395	179.2
TE-100NL	1" x 1" x 1"	6	1.075	27.3	4.40	111.8	2.18	55.4	0.669	303.5
TE-125NL	1-1/4" x 1-1/4" x 1-1/4"	6	1.405	35.7	4.86	123.4	2.43	61.7	0.999	453.1

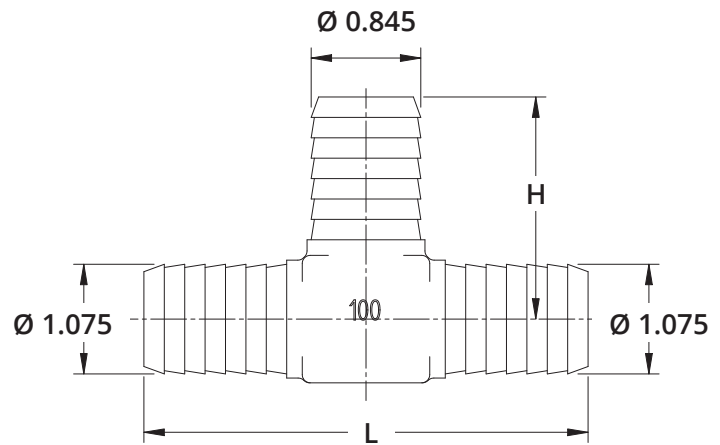
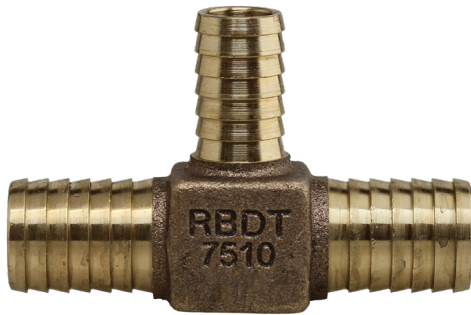


25 Whaley Avenue, PO Box 310
Milverton, ON CANADA N0K 1M0
Tel: 800-561-3164
VISIT US ONLINE AT BOSHART.COM

For more information on installation, adjustment, repair & operation, visit Boshart Knowledge Base at
SUPPORT.BOSHART.COM

TE-NL SERIES - NL BRONZE REDUCING TEE

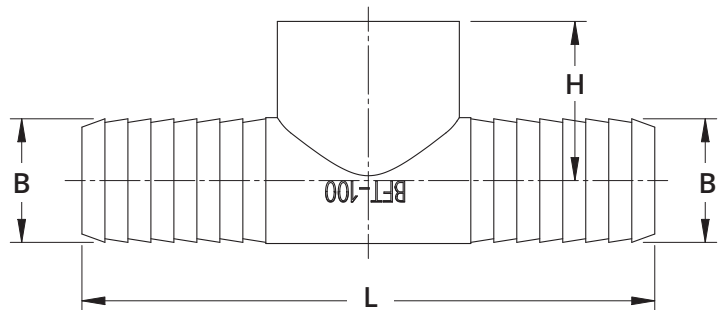
■ Poly Insert Barb x Poly Insert Barb x Poly Insert Barb



DIMENSIONS								
Part No.	Size (Poly x Poly x Poly)	No. of Barbs	L		H		Weight	
			in	mm	in	mm	lb	grams
TE-100-075NL	1" x 1" x 3/4"	6	4.33	110.0	2.13	54.1	0.637	288.9

BFT-NL SERIES - NL BRONZE TEE

■ Poly Insert Barb x Poly Insert Barb x FPT



DIMENSIONS										
Part No.	Size (Poly x Poly x FPT)	No. of Barbs	B (Barb Ø OD)		L		H		Weight	
			in	mm	in	mm	in	mm	lb	grams
BFT-075-100NL	1" x 1" x 3/4"	7	1.075	27.3	5.50	139.7	1.13	28.7	0.644	301.2
BFT-075NL	3/4" x 3/4" x 3/4"	6	0.845	21.5	4.28	108.7	1.00	25.4	0.411	186.4
BFT-100NL	1" x 1" x 1"	7	1.075	27.3	4.98	126.5	1.38	35.1	0.851	386.0
BFT-125NL	1-1/4" x 1-1/4" x 1-1/4"	7	1.405	35.7	5.34	135.6	1.57	39.9	1.257	570.2

BOSHART
INDUSTRIES

25 Whaley Avenue, PO Box 310
Milverton, ON CANADA N0K 1M0
Tel: 800-561-3164

VISIT US ONLINE AT BOSHART.COM

For more information on installation,
adjustment, repair & operation, visit
Boshart Knowledge Base at
SUPPORT.BOSHART.COM

