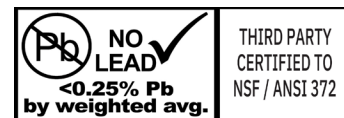


(SS)HL & (SS)HT SERIES - STAINLESS STEEL AND BRONZE HYDRANT FITTINGS

APPLICATIONS:

- For use with ASTM D2239 PE plastic pipe (Standard Specification for Polyethylene (PE) Pipe (SIDR-PR) Based on Controlled Inside Diameter).
- Designed for use with 50 PSI utility pipe, 75 and 100 PSI pipe, and any other PE pipe with inside diameters conforming to ASTM D2239.
- Insert fittings are intended for cold water applications, including irrigation, well service, and potable water applications. These products are not to be used with compressed gases.
- Fittings must be protected from freezing temperatures where fluid expansion due to freezing could occur.



Do not confuse hydrant insert fittings with hose fittings. The use of a hose fitting, which is manufactured with smaller barb diameters than poly (PE) pipe, will result in a leaking connection with very little or no pull off resistance!



FEATURES:

- Commonly used to connect waterlines to a hydrant underground.
- The hydrant fittings with a bottom pad are designed to elevate the pipe and clamp above the ground surface, reducing contact and minimizing abrasion or wear over time.
- Tapped fittings can be used to install several types of attachments including valves, pressure gauges, and temperature sensors.

SPECIFICATIONS:

- System operating pressures and temperatures are limited by the maximum operating pressures and temperatures of the ASTM D2239 PE pipe. Always refer to the PE pipe manufacturer's pressure and temperature ratings.
- Stainless Steel series made from 304 Stainless Steel alloy.
- Bronze series made from C89833 Bronze or C89844 No Lead Bronze alloy.

CERTIFICATIONS:

- NSF/ANSI Standard 372 Certified (Drinking Water System Components - Lead Content)
 - SS- (Stainless Steel alloys do not contain any lead 0.00% Pb)
 - NL Brass - (NL test criteria <0.25% Pb by weighted average)

RATINGS:

- See the last page for material specific pressure and temperature rating charts.

BOSHART
INDUSTRIES

25 Whaley Avenue, PO Box 310, Milverton, ON CANADA N0K 1M0
Tel: 800-561-3164

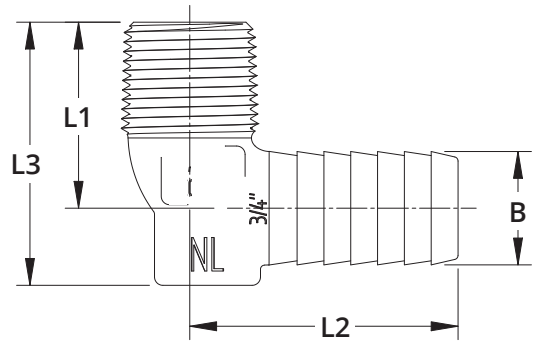
VISIT US ONLINE AT BOSHART.COM

For more information on installation, adjustment, repair & operation, visit Boshart Knowledge Base at SUPPORT.BOSHART.COM



SSHL SERIES - 304SS HYDRANT FITTINGS

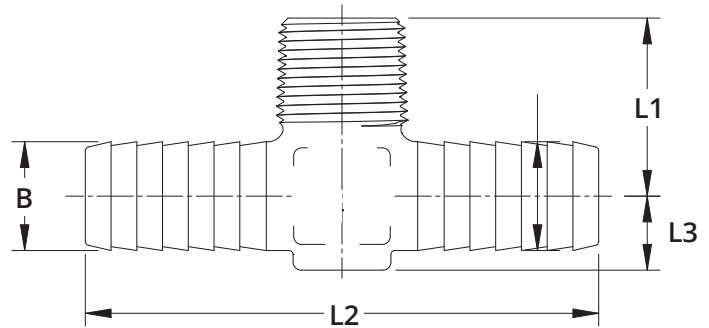
- Made from 304 Stainless Steel
- The sweep elbow design provides better flow and less turbulence than the square block design
- Elbows are used when installing a Yard Hydrant at end of a supply line.



DIMENSIONS													
Part No.	Size	No. of Barbs	Bottom Pad Design	B (Barb Ø OD)		L1		L2		L3		Weight	
				in	mm	in	mm	in	mm	in	mm	lb	g
90° Elbow - MPT x Poly Insert Barb													
SSHL-075	3/4"	6	Yes	0.845	21.5	1.39	35.3	2.00	50.8	1.96	49.8	0.282	128
SSHL-075-100	3/4" x 1"	7		1.075	27.3	1.50	38.1	2.21	56.1	2.25	57.2	0.355	161
SSHL-100	1"	7		1.075	27.3	1.79	45.5	2.34	59.4	2.54	64.5	0.481	218
SSHL-100-125	1" x 1-1/4"	7		1.405	35.7	1.96	49.8	2.39	60.7	2.88	73.2	0.679	308
SSHL-125	1-1/4"	7		1.405	35.7	1.94	49.3	2.53	64.3	2.87	72.9	0.756	343

SSHT SERIES - 304SS HYDRANT FITTINGS

- Made from 304 Stainless Steel



DIMENSIONS													
Part No.	Size	No. of Barbs	Bottom Pad Design	B (Barb Ø OD)		L1		L2		L3		Weight	
				in	mm	in	mm	in	mm	in	mm	lb	g
Tee- Poly Insert Barb x Poly Insert Barb x MPT													
SSHT-075	3/4"	6	Yes	0.845	21.5	1.38	35.1	3.99	101.3	0.58	14.7	0.375	170
SSHT-075-100	1" x 1" x 3/4"	6		1.075	27.3	1.51	38.4	4.50	114.3	0.75	19.1	0.551	250
SSHT-100	1"	7		1.075	27.3	1.71	43.4	4.75	120.7	0.75	19.1	0.648	294

BOSHART
INDUSTRIES

25 Whaley Avenue, PO Box 310, Milverton, ON CANADA N0K 1M0
Tel: 800-561-3164

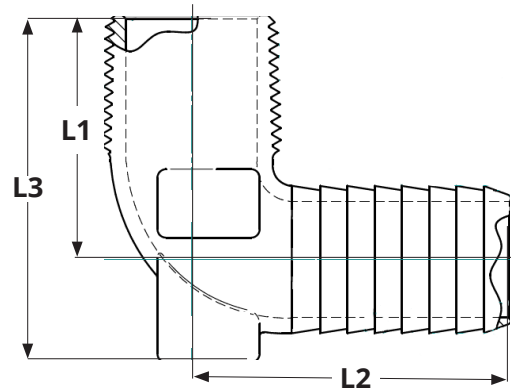
VISIT US ONLINE AT BOSHART.COM

For more information on installation,
adjustment, repair & operation, visit
Boshart Knowledge Base at
SUPPORT.BOSHART.COM



HLXL SERIES - NL BRONZE HYDRANT FITTINGS

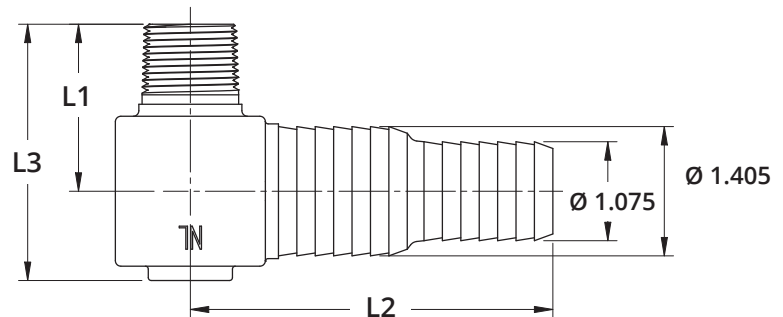
- Made from C89833 or C89844 no lead bronze
- Tapped fittings have a 1/4" FPT port which conforms to ASME B1.20.1
- The sweep elbow design provides better flow and less turbulence than the square block design
- Elbows are used when installing a Yard Hydrant at end of a supply line.



DIMENSIONS													
Part No.	Size	No. of Barbs	Bottom Pad Design	B (Barb Ø OD)		L1		L2		L3		Weight	
				in	mm	in	mm	in	mm	in	mm	lb	g
Extra Long 90° Elbow - MPT x Poly Insert Barb													
HLXL-075-100NL	3/4" x 1"	8	Yes	1.075	27.3	1.50	38.1	2.50	63.5	2.25	57.2	0.529	240
HLXL-100NL	1"	8	Yes	1.075	27.3	1.76	44.7	2.60	66.0	2.54	64.5	0.655	297
Extra Long Tapped 90° Elbow - MPT x Poly Insert Barb													
HLXL-100-TNL	1"	8	Yes	1.075	27.3	1.76	44.7	2.60	66.0	2.52	64.0	0.602	273

HLU & HLW SERIES - NL BRONZE HYDRANT FITTINGS

- Made from C89833 or C89844 no lead bronze
- The HLU and HLW series are "step-down" or "combo" fittings that provide one fitting with two different sizes of barbs for either size of poly in your application. When the 1-1/4" size is desired, the 1" barbs can either be cut off or ignored. Contractors may choose to keep these on thier truck for situations where the installer doesn't know what size of poly pipe to expect on site.



DIMENSIONS											
Part No.	Size	No. of Barbs	Bottom Pad Design	L1		L2		L3		Weight	
				in	mm	in	mm			lb	g
90° Elbow - MPT x Poly Insert Barb											
HLU-NL	3/4" x (1-1/4" x 1")	6	Yes	1.83	46.5	3.94	100.1	2.80	71.1	1.105	501
HLW-NL	1" x (1-1/4" x 1")	6	Yes	1.84	46.7	4.04	102.6	2.81	71.4	1.124	510

BOSHART
INDUSTRIES

25 Whaley Avenue, PO Box 310, Milverton, ON CANADA N0K 1M0
Tel: 800-561-3164

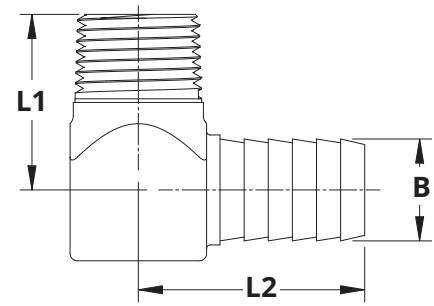
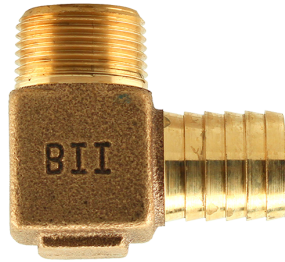
VISIT US ONLINE AT BOSHART.COM

For more information on installation,
adjustment, repair & operation, visit
Boshart Knowledge Base at
SUPPORT.BOSHART.COM



HL, & HL-TNL SERIES - NL BRONZE HYDRANT FITTINGS

- Made from C89833 or C89844 no lead bronze
- Tapped fittings (HL-TNL) have a 1/4" FPT port which conforms to ASME B1.20.1

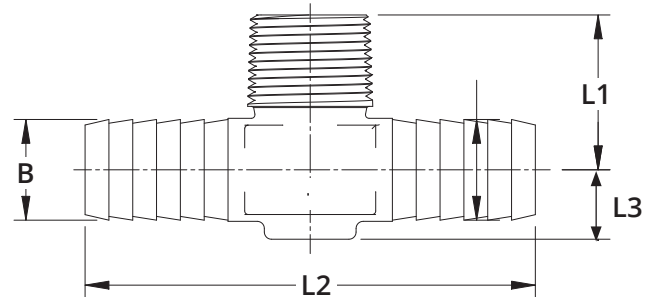


DIMENSIONS

Part No.	Size	No. of Barbs	Bottom Pad Design	B (Barb Ø OD)		L1		L2		Weight	
				in	mm	in	mm	in	mm	lb	g
90° Elbow - MPT x Poly Insert Barb											
HL-075-100NL	3/4" x 1"	6	Yes	1.075	27.3	1.62	41.1	1.97	50.0	0.439	199
HL-075-125NL	3/4" x 1-1/4"	6	Yes	1.405	35.7	1.82	46.2	2.42	61.5	0.983	446
HL-075NL	3/4"	5	No	0.845	21.5	1.46	37.1	1.88	47.8	0.342	155
HL-100-125NL	1" x 1-1/4"	6	No	1.405	35.7	1.80	45.7	2.45	62.2	0.917	416
HL-100NL	1"	5	Yes	1.075	27.3	1.54	39.1	1.99	50.5	0.534	242
HL-125NL	1-1/4"	6	No	1.405	35.7	1.81	46.0	2.44	62.0	0.815	369.7
Tapped 90° Elbow - MPT x Poly Insert Barb											
HL-075-100-TNL	3/4" x 1"	6	No	1.075	27.3	1.61	40.9	1.97	50.0	0.448	203
HL-100-TNL	1"	5	No	1.075	27.3	1.65	41.9	2.14	54.4	0.569	258

HT SERIES - NL BRONZE HYDRANT FITTINGS

- Made from C89833 or C89844 no lead bronze
- Tapped fittings have a 1/4" FPT port which conforms to ASME B1.20.1



DIMENSIONS

Part No.	Size	No. of Barbs	Bottom Pad Design	B (Barb Ø OD)		L1		L2		L3		Weight	
				in	mm	in	mm	in	mm	in	mm	lb	g
Tee - Poly Insert Barb x Poly Insert Barb x MPT													
HT-075-100NL	1" x 1" x 3/4"	6	No	1.075	27.3	1.55	39.4	4.14	105.2	0.62	15.7	0.558	253
HT-075-125NL	1-1/4"x1-1/4"x3/4"	7	Yes	1.405	35.7	1.60	40.6	4.50	114.3	0.90	22.9	0.970	440
HT-075NL	3/4"	4	No	0.845	21.5	1.63	41.4	3.83	97.3	0.59	15.0	0.454	206
HT-100-125NL	1-1/4"x1-1/4"x1"	7	Yes	1.405	35.7	1.66	42.2	4.70	119.4	0.94	23.9	1.041	472
HT-100NL	1"	4	No	1.075	27.3	1.57	39.9	3.81	96.8	0.70	17.8	0.679	308

BOSHART
INDUSTRIES

25 Whaley Avenue, PO Box 310, Milverton, ON CANADA N0K 1M0
Tel: 800-561-3164

VISIT US ONLINE AT BOSHART.COM

For more information on installation, adjustment, repair & operation, visit Boshart Knowledge Base at SUPPORT.BOSHART.COM



(SS)HL & (SS)HT SERIES PRESSURE & TEMPERATURE RATINGS

PRESSURE & TEMPERATURE RATINGS FOR 304 STAINLESS STEEL HYDRANT FITTINGS			
Temperature		Pressure	
°F	°C	PSI	bar
73.4	23	400	27.6
150	65.5	300	20.7
200	93.3	265	18.3
250	121.1	225	15.5
300	148.8	165	11.4
350	176.6	150	10.3
400	204.4	125	8.6



PRESSURE & TEMPERATURE RATINGS FOR NO LEAD BRONZE HYDRANT FITTINGS			
Temperature		Pressure	
°F	°C	PSI	bar
73.4	23	400	27.6
150	65.5	200	13.8
200	93.3	190	13.1
250	121.1	180	12.4
300	148.8	165	11.4
350	176.6	150	10.3
400	204.4	125	8.6



For operating pressures over the stated maximum pressure or for temperatures over 73.4 °F (23 °C), independent testing by the end user is recommended. It is solely the user's responsibility to determine the suitability of the fitting for the intended service.

Pressure and temperature rating charts should be used as a guide only.



25 Whaley Avenue, PO Box 310, Milverton, ON CANADA N0K 1M0
Tel: 800-561-3164

VISIT US ONLINE AT [BOSHART.COM](https://www.boshart.com)

For more information on installation, adjustment, repair & operation, visit Boshart Knowledge Base at [SUPPORT.BOSHART.COM](https://support.boshart.com)