

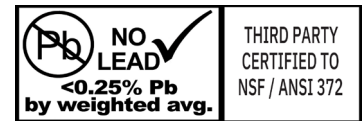
SSPEX SERIES - 304 STAINLESS STEEL CRIMP PEX FITTINGS

Boshart's Stainless Steel Crimp PEX fittings are great for all PEX applications. They are resistant to chemicals in corrosive and aggressive water conditions. 304SS is not susceptible to dezincification, unlike brass. SSPEX fittings are designed for use with ASTM F876 PEX pipe, and ASTM F2769, ASTM F2623, (PE-RT) SDR9 pipe, in cold and hot water distribution systems. A large internal diameter provides maximum flow through the fitting.



SPECIFICATIONS:

- For use with ASTM F2769, ASTM F2623, (PE-RT) SDR9 pipe
- For use with ASTM F876 PEX pipe
- Crimp PEX end conform to ASTM F1807
- Threads conform to ASME B1.20.1
- Compatible with: PEX-A, PEX-B, and PEX-C



CERTIFICATIONS:

- cUPC Standard ASTM F1807 & CSA B137.5
- NSF/ANSI Standard 61 Certified (Drinking Water System Components - Health Effects)
- NSF/ANSI Standard 372 Certified (Drinking Water System Components - Lead Content)
(Stainless steel alloys do not contain any lead, 0.00% Pb)
- NSF/ANSI Standard 14 Certified (Plastics Piping System Components and Related Materials)

RATINGS:

- Maximum Pressure Rating: 400 PSI
- Temperature Range: Up to 400°F (204°C)

NOTE: Do not exceed the pipe manufacturer's recommended maximum pressure and temperature rating.

MATERIAL LIST	
Name	Percent of Composition
304 Stainless Steel	
Iron (Fe)	64.0-72.0
Carbon (C)	0.08 max
Silicone (Si)	1.00 max
Manganese (Mn)	2.00 max
Phosphorus (P)	0.05 max
Sulfur (S)	0.04 max
Chromium (Cr)	18.0-20.0
Nickel (Ni)	8.0-11.0

BOSHART
INDUSTRIES

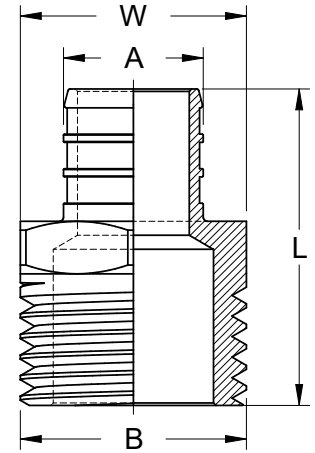
25 Whaley Avenue, PO Box 310, Milverton, ON CANADA N0K 1M0
Tel: 800-561-3164

VISIT US ONLINE AT BOSHART.COM



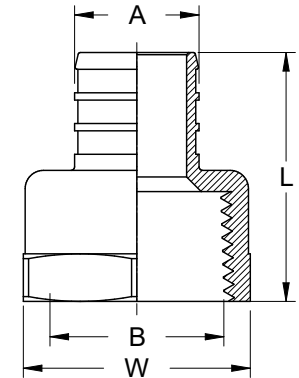
Adapter - Crimp PEX x MPT

Part No.	Nominal Pipe Size		L		W	
	A (Crimp PEX)	B (MPT)	in	mm	in	mm
SSPEX-MA05	1/2"	1/2"	1.50	38.10	0.87	22.10
SSPEX-MA0507	1/2"	3/4"	1.52	38.61	1.08	27.43
SSPEX-MA07	3/4"	3/4"	1.52	38.61	1.08	27.43
SSPEX-MA0705	3/4"	1/2"	1.48	37.59	0.87	22.10
SSPEX-MA0710	3/4"	1"	1.69	42.93	1.34	34.00
SSPEX-MA10	1"	1"	1.89	48.00	1.34	34.00
SSPEX-MA1007	1"	3/4"	1.71	43.43	1.06	27.00
SSPEX-MA1012	1"	1-1/4"	2.00	50.80	1.69	43.00
SSPEX-MA12	1-1/4"	1-1/4"	2.14	54.30	1.69	43.00



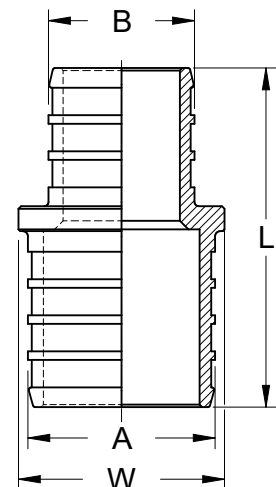
Adapter - Crimp PEX x FPT

Part No.	Nominal Pipe Size		L		W	
	A (Crimp PEX)	B (FPT)	in	mm	in	mm
SSPEX-FA05	1/2"	1/2"	1.34	34.00	0.98	24.89
SSPEX-FA0507	1/2"	3/4"	1.34	34.00	1.22	31.00
SSPEX-FA07	3/4"	3/4"	1.34	34.00	1.22	31.00
SSPEX-FA0705	3/4"	1/2"	1.34	34.00	0.98	24.89
SSPEX-FA0710	3/4"	1"	1.42	36.00	1.50	38.10
SSPEX-FA10	1"	1"	1.59	40.39	1.50	38.10
SSPEX-FA1007	1"	3/4"	1.65	42.00	1.22	31.00
SSPEX-FA1012	1"	1-1/4"	1.81	46.00	1.83	46.50
SSPEX-FA12	1-1/4"	1-1/4"	1.95	49.50	1.83	46.50
SSPEX-FA1210	1-1/4"	1"	1.94	49.20	1.50	38.00



Coupling - Crimp PEX

Part No.	Nominal Pipe Size		L		W	
	A	B	in	mm	in	mm
SSPEX-C05	1/2"	1/2"	1.38	35.00	0.55	14.00
SSPEX-C07	3/4"	1/2"	1.38	35.00	0.75	19.00
SSPEX-C0705	3/4"	3/4"	1.38	35.00	0.75	19.00
SSPEX-C10	1"	1"	1.73	44.00	0.95	24.10
SSPEX-C1007	1"	3/4"	1.56	39.62	0.95	24.10
SSPEX-C12	1-1/4"	1-1/4"	2.00	51.00	1.18	30.00
SSPEX-C1210	1-1/4"	1"	1.86	47.20	1.18	30.00



BOSHART
INDUSTRIES

25 Whaley Avenue, PO Box 310, Milverton, ON CANADA N0K 1M0

Tel: 800-561-3164

VISIT US ONLINE AT BOSHART.COM

For more information on installation, adjustment, repair & operation, visit Boshart Knowledge Base at SUPPORT.BOSHART.COM

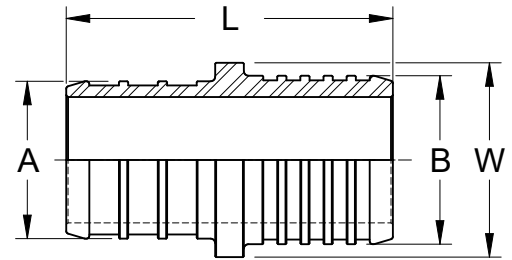



Transition Coupling - Crimp PEX x PB

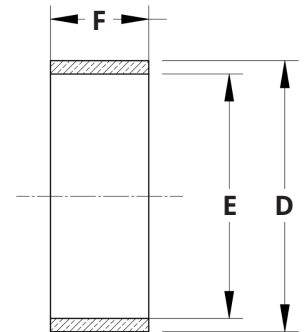
Transitions from Polybutylene (PB) pipe PB2110 to PEX. Kit includes one coupling and two copper crimp rings. The black ring goes to the crimp PEX end and the copper colored ring goes to the PB end.




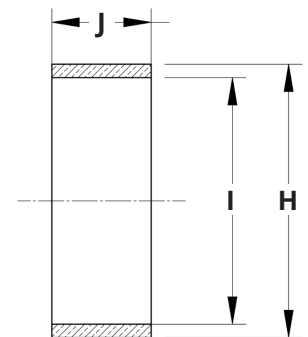
Part No.	Nominal Pipe Size		L		W	
	A (PEX)	B (PB)	in	mm	in	mm
SSPEX-PBCK05	1/2"	1/2"	1.39	35.30	0.63	16.00
SSPEX-PBCK07	3/4"	3/4"	1.39	35.30	0.83	21.00
SSPEX-PBCK10	1"	1"	1.75	44.40	1.06	27.00



Part	Description	D		E***		F	
		in	mm	in	mm	in	mm
 Ring for crimp PEX end*	1/2" Crimp PEX Ring	0.75	19.05	0.64	16.21	0.325	8.26
	3/4" Crimp PEX Ring	1.00	25.40	0.89	22.56	0.33	8.26
	1" Crimp PEX Ring	1.25	31.75	1.15	29.26	0.365	9.27



Part	Description	H		I***		J	
		in	mm	in	mm	in	mm
 Ring for PB end**	1/2" Crimp PB Ring	0.75	19.05	0.65	16.56	0.362	9.20
	3/4" Crimp PB Ring	1.00	25.40	0.90	22.91	0.362	9.20
	1" Crimp PB Ring	1.25	31.75	1.15	29.26	0.362	9.20



*Dimensional tolerances as per ASTM F1807

**Dimensional tolerances as per ASTM F1380

***Inner diameters (I & E) are calculated dimensions and are a reference only.

BOSHART
INDUSTRIES

25 Whaley Avenue, PO Box 310, Milverton, ON CANADA N0K 1M0

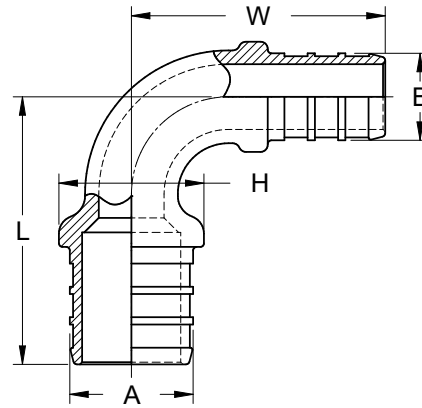
Tel: 800-561-3164

VISIT US ONLINE AT BOSHART.COM

For more information on installation, adjustment, repair & operation, visit Boshart Knowledge Base at SUPPORT.BOSHART.COM

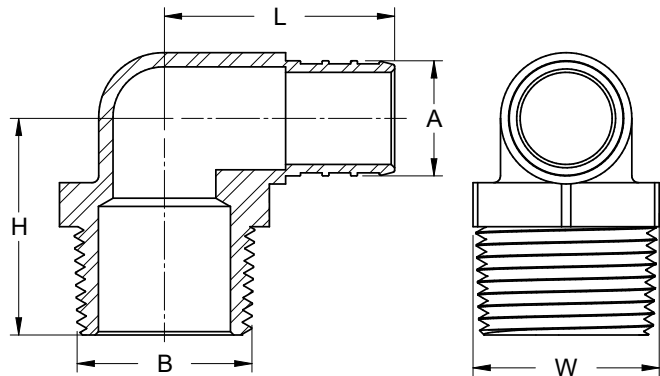


90° Elbow - Crimp PEX



Part No.	Nominal Pipe Size		L		W		H	
	A	B	in	mm	in	mm	in	mm
SSPEX-E05	1/2"	1/2"	1.38	35.00	1.38	35.00	0.55	14.00
SSPEX-E07	3/4"	3/4"	1.66	42.19	1.66	42.19	0.75	19.00
SSPEX-E0705	3/4"	1/2"	1.45	36.91	1.38	35.00	0.79	20.00
SSPEX-E10	1"	1"	2.09	53.00	2.09	53.00	0.95	24.10
SSPEX-E1007	1"	3/4"	1.57	40.00	1.52	38.50	0.945	24.00
SSPEX-E12	1-1/4"	1-1/4"	1.97	50.00	1.97	50.00	1.181	30.00

90° Elbow - Crimp PEX x MPT



Part No.	Nominal Pipe Size		L		W		H	
	A	B	in	mm	in	mm	in	mm
SSPEX-ME05	1/2"	1/2"	1.18	30.00	0.87	22.10	1.22	31.00
SSPEX-ME07	3/4"	3/4"	1.34	34.00	1.08	27.43	1.26	32.00
SSPEX-ME10	1"	1"	1.64	41.60	1.34	34.00	1.99	50.50
SSPEX-ME12	1-1/4"	1-1/4"	1.93	49.00	1.69	43.00	2.13	54.00

BOSHART
INDUSTRIES

25 Whaley Avenue, PO Box 310, Milverton, ON CANADA N0K 1M0

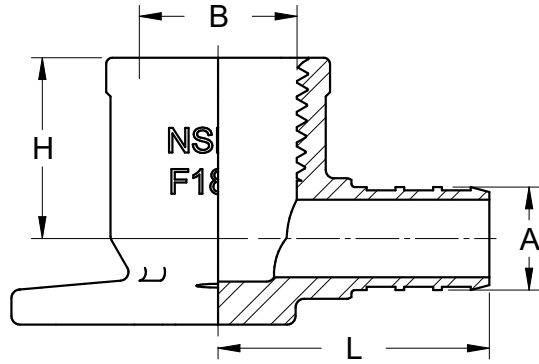
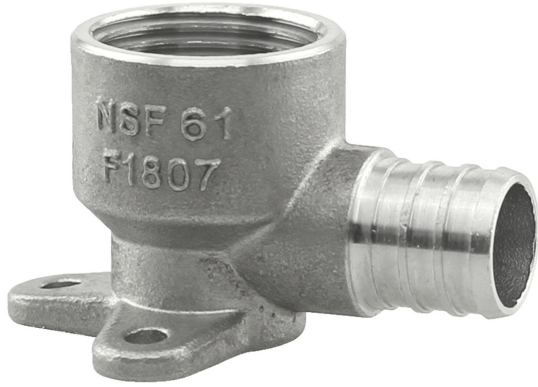
Tel: 800-561-3164

VISIT US ONLINE AT BOSHART.COM

For more information on installation, adjustment, repair & operation, visit Boshart Knowledge Base at SUPPORT.BOSHART.COM

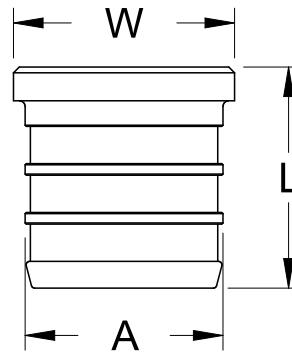


Dropear 90° Elbow - Crimp PEX x FPT



Part No.	Nominal Pipe Size		L		W		H	
	A	B	in	mm	in	mm	in	mm
SSPEX-DE05	1/2"	1/2"	1.24	31.50	1.89	48.00	0.83	21.00
SSPEX-DE07	3/4"	3/4"	1.42	36.00	1.89	48.00	0.83	21.00
SSPEX-DE0705	3/4"	1/2"	1.22	31.00	1.89	48.01	0.75	19.00

Plug - Crimp PEX



Part No.	Nominal Pipe Size	L		W	
		in	mm	in	mm
SSPEX-P05	1/2"	0.75	19.00	0.55	14.00
SSPEX-P07	3/4"	0.75	19.00	0.75	19.00
SSPEX-P10	1"	0.93	23.50	0.95	24.00
SSPEX-P12	1-1/4"	1.06	27.00	1.18	30.00



25 Whaley Avenue, PO Box 310, Milverton, ON CANADA N0K 1M0

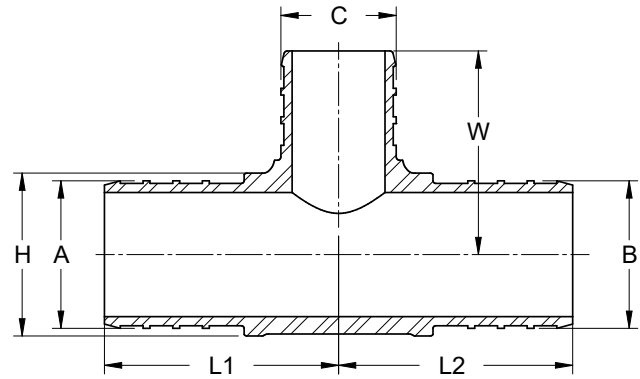
Tel: 800-561-3164

VISIT US ONLINE AT BOSHART.COM

For more information on installation, adjustment, repair & operation, visit Boshart Knowledge Base at SUPPORT.BOSHART.COM



Tee - Crimp PEX

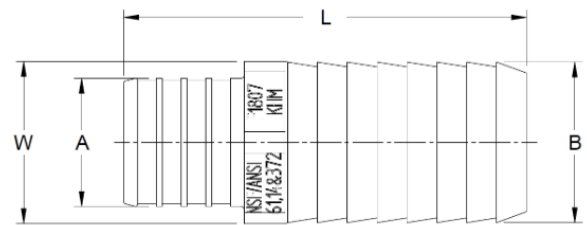


Part No.	Nominal Pipe Size			L1		L2		W		H	
	A	B	C	in	mm	in	mm	in	mm	in	mm
SSPEX-T05	1/2"	1/2"	1/2"	0.98	25.00	0.98	25.00	0.98	25.00	0.55	14.00
SSPEX-T050503	1/2"	1/2"	3/8"	0.93	23.50	0.93	23.50	0.98	25.00	0.55	14.00
SSPEX-T07	3/4"	3/4"	3/4"	1.06	27.00	1.06	27.00	1.06	27.00	0.75	19.00
SSPEX-T070505	3/4"	1/2"	1/2"	1.08	27.50	1.08	27.50	1.08	27.50	0.75	19.00
SSPEX-T070507	3/4"	1/2"	3/4"	1.08	27.50	1.08	27.50	1.08	27.50	0.75	19.00
SSPEX-T070703	3/4"	3/4"	3/8"	1.00	25.50	1.00	25.50	1.08	27.50	0.75	19.00
SSPEX-T070705	3/4"	3/4"	1/2"	0.98	25.00	0.98	25.00	1.08	27.50	0.75	19.00
SSPEX-T070710	3/4"	3/4"	1"	1.18	30.00	1.18	30.00	1.36	34.50	0.95	24.13
SSPEX-T10	1"	1"	1"	1.36	34.50	1.36	34.50	1.36	34.50	0.95	24.13
SSPEX-T100507	1"	1/2"	3/4"	1.36	34.50	1.19	30.10	1.18	42.00	0.95	24.13
SSPEX-T100510	1"	1/2"	1"	1.36	34.57	1.19	30.15	1.36	34.57	0.95	24.13
SSPEX-T100705	1"	3/4"	1/2"	1.22	31.00	1.00	25.50	1.22	31.00	0.95	24.13
SSPEX-T100707	1"	3/4"	3/4"	1.36	34.50	1.19	30.10	1.18	30.00	0.95	24.13
SSPEX-T100710	1"	3/4"	1"	1.36	34.50	1.19	30.10	1.36	34.50	0.95	24.13
SSPEXT-101005	1"	1"	1/2"	1.36	34.50	1.36	34.50	1.18	30.00	0.95	24.13
SSPEX-T101007	1"	1"	3/4"	1.36	34.50	1.36	34.50	1.18	30.00	0.95	24.13
SSPEX-T12	1-1/4"	1-1/4"	1-1/4"	1.65	42.00	1.65	42.00	1.65	42.00	1.18	30.00
SSPEX-T121210	1-1/4"	1-1/4"	1"	1.50	38.00	1.50	38.00	1.50	38.20	1.18	30.00
SSPEX-T101012	1"	1"	1-1/4"	1.46	37.00	1.46	37.00	1.48	37.50	0.94	24.00

Transition Coupling- Crimp PEX x PE



Part No.	Nominal Pipe Size		L		W	
	A	B	in	mm	in	mm
SSPEX-C10PE10	1"	1"	2.70	68.50	1.09	27.60
SSPEX-C12PE12	1-1/4"	1-1/4"	2.83	71.80	1.41	35.90



BOSHART
INDUSTRIES

25 Whaley Avenue, PO Box 310, Milverton, ON CANADA N0K 1M0

Tel: 800-561-3164

VISIT US ONLINE AT BOSHART.COM

For more information on installation, adjustment, repair & operation, visit Boshart Knowledge Base at SUPPORT.BOSHART.COM



PEX Accessories



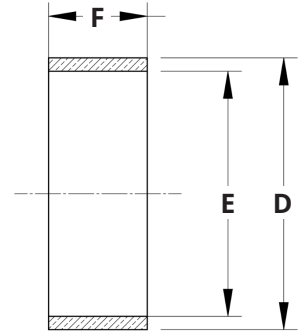
Crimp Ring

- Made from C12200 copper



Crimp Ring Markings

Part No.	Description	D		E**		F	
		in	mm	in	mm	in	mm
720P-CR05*	1/2" Crimp PEX Ring	0.75	19.05	0.64	16.21	0.325	8.26
720P-CR07*	3/4" Crimp PEX Ring	1.00	25.40	0.89	22.56	0.33	8.26
720P-CR10*	1" Crimp PEX Ring	1.25	31.75	1.15	29.26	0.365	9.27
720P-CR12*	1-1/4" Crimp PEX Ring	1.50	38.10	1.39	35.3	0.550	13.97
720P-CR15*	1-1/2" Crimp PEX Ring	1.78	45.21	1.65	41.9	0.650	16.51
720P-CR20*	2" Crimp PEX Ring	2.30	58.42	2.16	54.9	0.750	19.05



*Dimensional tolerances as per ASTM F1807

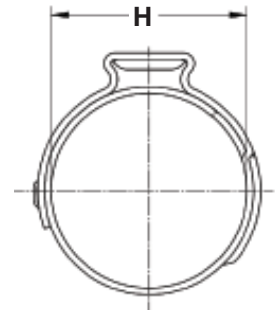
**Note: I.D. (E) is a calculated dimension and is a reference only.



Pinch Clamp

- Made from 304 stainless steel
- Conforms to testing standard ASTM-F877 (Standard Specification for Crosslinked Polyethylene (PEX) Hot- and Cold-Water Distribution Systems)

Part No.	Description	H (Unclamped)		H (Clamped)	
		in	mm	in	mm
SSPEX-PC05	1/2" PEX Clamp Ring	0.69	17.5	0.61	15.5
SSPEX-PC07	3/4" PEX Clamp Ring	0.92	23.3	0.86	21.8
SSPEX-PC10	1" PEX Clamp Ring	1.17	29.6	1.12	28.4



25 Whaley Avenue, PO Box 310, Milverton, ON CANADA N0K 1M0

Tel: 800-561-3164

VISIT US ONLINE AT BOSHART.COM

For more information on installation, adjustment, repair & operation, visit Boshart Knowledge Base at SUPPORT.BOSHART.COM

