

28-PFV SERIES - PVC FLOAT VALVES

FEATURES:

- Easy adjustable angle for liquid level control, dual fulcrum pin holes allow for two positions to set the lever

SPECIFICATION:

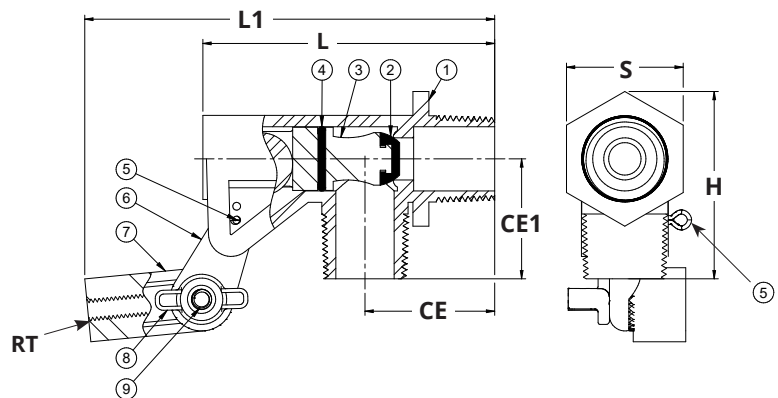
- MPT Threads conform to ANSI/ASME B1.20.1
- Heavy duty injection molded grey PVC body
- 304 Stainless Steel hardware

RATINGS:

- Max Pressure Rating: 100 PSI
- Working Temperature Rating: 140°F (60°C)



MATERIAL LIST		
No.	Name	Material
1	Body	PVC
2	Shut Off Seal	NBR Rubber
3	Plunger Body	PVC
4	O-ring/ Cylinder Seal	NBR Rubber
5	Cotter Pin (Location)	304 Stainless Steel
6	Pivot Arm	PVC
7	Float Rod End Adapter	PVC
8	Wingnut 1/4"-20 UNC for 1/2" to 1" 3/8"-16 UNC for 1-1/4" to 1-1/2"	304 Stainless Steel
9	Hex bolt 1/4"-20 UNC for 1/2" to 1" 3/8"-16 UNC for 1-1/4" to 1-1/2"	304 Stainless Steel



DIMENSIONS																	
Part No.	Description		Rod Connection (RT)	CE		CE1		L		L1		H		S		Weight	
	Inlet (MPT)	Outlet (MPT)		in	mm	in	mm	in	mm	in	mm	in	mm	in	mm	lb	g
28-PFV-05	1/2"	1/2"	1/4"-20 UNC	0.51	13.00	0.51	13.00	3.14	79.80	4.375	111.13	2.19	55.50	1.38	35.00	0.24	110
28-PFV-07	3/4"	3/4"	1/4"-20 UNC	0.75	19.00	0.71	18.00	3.54	90.00	4.980	126.49	2.19	55.50	1.38	35.00	0.35	160
28-PFV-10	1"	1"	1/4"-20 UNC	0.87	22.00	0.87	22.00	4.84	123.00	6.200	157.48	2.86	72.70	1.77	45.00	0.42	190
28-PFV-12	1-1/4"	1-1/4"	3/8"-16 UNC	1.22	31.00	1.30	33.00	6.91	175.60	8.563	217.50	3.57	90.60	2.17	55.00	1.28	580
28-PFV-15	1-1/2"	1-1/2"	3/8"-16 UNC	1.42	36.00	1.30	33.00	6.93	176.00	9.000	228.60	3.58	91.00	2.17	55.00	1.32	600

TEMPERATURE CORRECTION FACTOR FOR PVC VALVES

As temperature increases, working pressure decreases. The optimal working pressure for PVC valves is 150 PSI @ 73°F (22°C). If the temperature increases above 73°F (22°C), use the PVC correction factor to determine working pressure. Multiply the maximum working pressure by the correction factor.

Temperature	73°F (22°C)	90°F (32°C)	100°F (38°C)	110°F (44°C)	120°F (49°C)	130°F (54°C)	140°F (60°C)
PVC Correction Factor	1.00	0.75	0.62	0.51	0.40	0.31	0.22

BOSHART
INDUSTRIES

25 Whaley Avenue, PO Box 310, Milverton, ON CANADA N0K 1M0
Tel: 800-561-3164

VISIT US ONLINE AT BOSHART.COM

For more information on installation, adjustment, repair & operation, visit Boshart Knowledge Base at SUPPORT.BOSHART.COM

