

17(Q)SCBV-SU, 17(Q)SCBV-UC, 17(Q)SCBV-TU COMBINATION BALL/ SWING CHECK VALVE

Standard series PVC combination ball / swing check valves allow for wastewater pumping applications requiring both in-line shut off and back flow prevention. Combination valves result in a more compact installation than two separate valves, ideal for installations where space is limited. Quiet series combination valves are a great solution for sump, sewage, pool and spa applications, ideal solution when extremely quiet operation is desired.



IMPORTANT: When pumping SOLIDS/SEMI SOLIDS valve must be installed HORIZONTALLY (up to 45° angle acceptable). Extra care must be taken to ensure the flow arrow points away from the pump AND the check valve body is oriented as per the marking on the valve body "HORIZONTAL USE THIS SIDE UP". Failure to position the swing check valve with the hinge of the flapper in the top center position will result in the valve not functioning properly. ** Best practice is to install valves in the VERTICAL position when pumping SOLID FREE liquids.

FEATURES:

- Standard model has angled seat, which shortens the travel distance of the flapper minimizing flow reversal, noise and potential damage to hydraulic shock (water hammer)
- Quiet model offers spring loaded hinged flapper mechanism to eliminate noise caused by hydraulic shock (water hammer)
- Full Port design for less friction and easier pumping
- Double O-Ring valve seal on blow-out proof stem
- Durable ABS ball valve handle
- Designed for horizontal or vertical installation
- No metallic parts on standard models, corrosion resistant

SPECIFICATIONS:

- Material: Type 1 Rigid Polyvinyl Chloride as per ASTM-D1784
- Static Head: Minimum 2 feet
- Body: White
- Neoprene seal
- Valve body designed for interchangeability between compression or ASTM-D2466 slip connections
- Weighted flapper assembly on standard models
- Spring loaded flapper assembly on quiet models
- SS Hinge pin and torsion spring for corrosion resistance on quiet models



RATINGS:

- Max Pressure: Valve bodies are rated at 150 PSI (1034.21 kPa) Static Pressure at 72°F (22°C) Non Shock
- Not recommended for use on systems exceeding 100 PSI (689.48 kPa) at 120°F (48.8°C)

Temperature Correction Factor to PVC Swing Check Valves
As temperature increases, working pressure decreases. The optimal working pressure for PVC valves is 150 PSI @ 73°F (22°C). If the temperature increases above 73°F (22°C), use the PVC correction factor to determine working pressure. Multiply the maximum working pressure by the correction factor.

Temperature	73°F (22°C)	90°F (32°C)	100°F (38°C)	110°F (44°C)	120°F (49°C)	130°F (54°C)	140°F (60°C)
PVC Correction Factor	1.00	0.75	0.62	0.51	0.40	0.31	0.22

BOSHART
INDUSTRIES

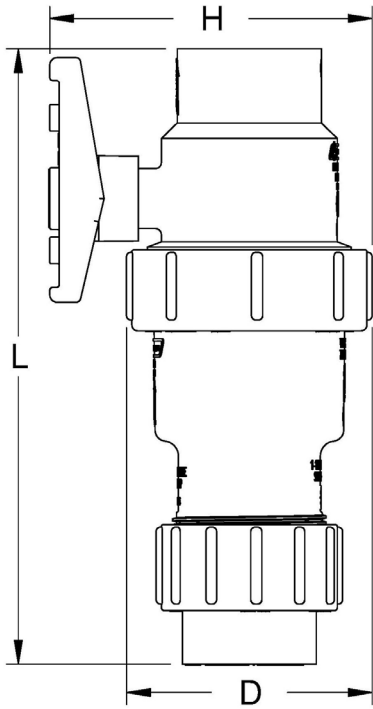
25 Whaley Avenue, PO Box 310
Milverton, ON CANADA N0K 1M0
Tel: 800-561-3164

VISIT US ONLINE AT BOSHART.COM

For more information on installation,
adjustment, repair & operation, visit
Boshart Knowledge Base at
SUPPORT.BOSHART.COM

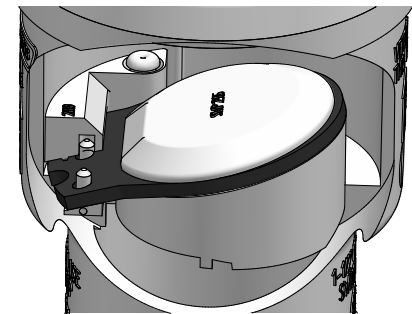


Slip Union:

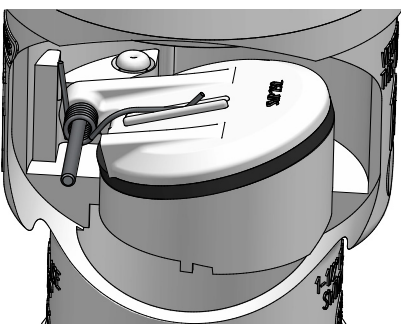


Component	Name
1	Slip connector
2	Slip Nut
3	Ball Valve Union Nut
4	O-Ring (AS568A-329)
Boshart part numbers on Page 5	

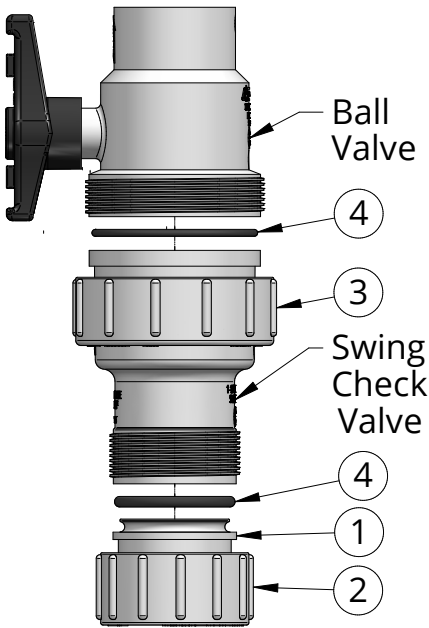
Valve Body Internal View:



17SCBV Series - Gravity Closing
(Rubber Flapper & Angled Seat)



17QSCBV Series - Quiet Spring Assist
Closing (SS Mechanical Hinge Pin)



DIMENSIONS											
Part No.	Type	Inlet Connection	Outlet Connection	L		H		D		Weight	
				in	mm	in	mm	in	mm	lb	grams
17SCBV-15SU	Standard	1-1/2" Slip Union	1-1/2" Slip	10.30	261.62	5.39	136.91	4.11	104.39	1.75	793.79
17QSCBV-15SU	Quiet										
17SCBV-20SU	Standard	2" Slip Union	2" Slip	11.65	295.91	6.17	137.06	4.56	115.82	2.53	1147.6
17QSCBV-20SU	Quiet										

BOSHART

INDUSTRIES

25 Whaley Avenue, PO Box 310
Milverton, ON CANADA N0K 1M0
Tel: 800-561-3164

VISIT US ONLINE AT BOSHART.COM

For more information on installation,
adjustment, repair & operation, visit
Boshart Knowledge Base at
SUPPORT.BOSHART.COM

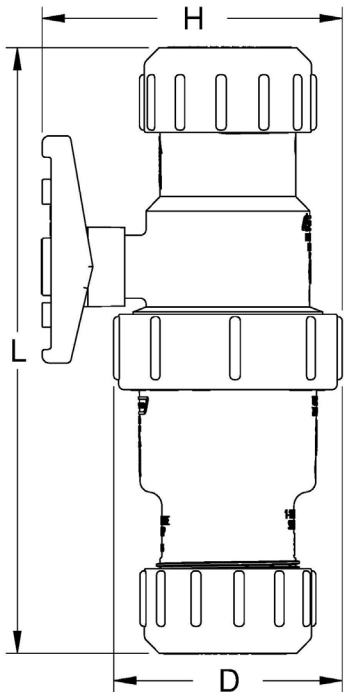
© 2025 Boshart Industries Inc. All Rights Reserved.

BII-17(Q)SCBV-SU-0425(131CC)V2

Compression Union:

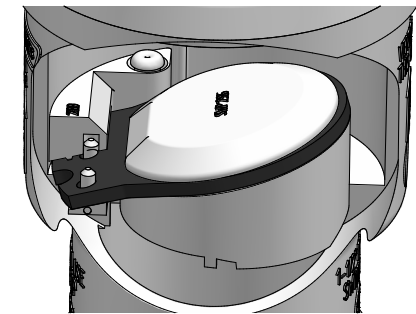


17SCBV-15UC

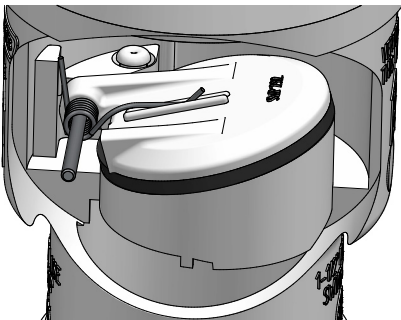


Component	Name
1	Compression Gasket
2	Compression Nut
3	Ball Valve Union Nut
4	O-Ring (AS568A-234)
Boshart part numbers on Page 5	

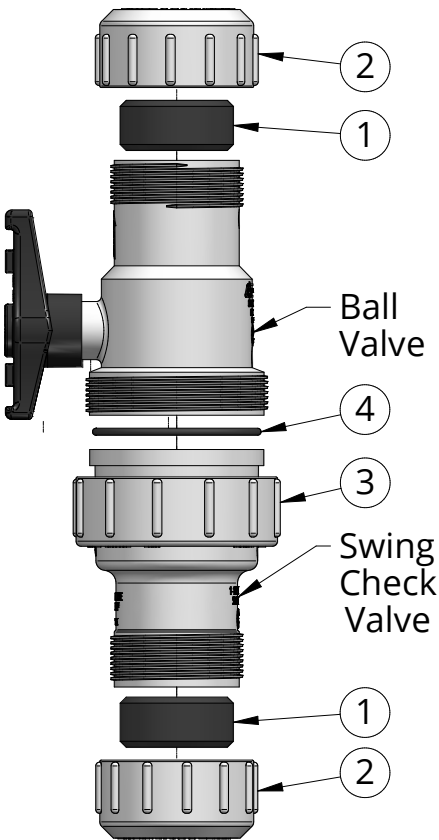
Valve Body Internal View:



17SCBV Series - Gravity Closing
(Rubber Flapper & Angled Seat)



17QSCBV Series - Quiet Spring Assist
Closing (SS Mechanical Hinge Pin)



DIMENSIONS											
Part No.	Type	Inlet Connection	Outlet Connection	L		H		D		Weight	
				in	mm	in	mm	in	mm	lb	grams
17SCBV-15UC	Standard	1-1/2" Compression	1-1/2" Compression	10.93	277.62	5.39	136.91	4.11	104.39	1.98	898.11
17QSCBV-15UC	Quiet										
17SCBV-20SU	Standard	2" Compression	2" Compression	11.90	302.26	6.17	156.72	4.56	115.82	2.78	1261.0
17QSCBV-20UC	Quiet										

BOSHART

INDUSTRIES

25 Whaley Avenue, PO Box 310
Milverton, ON CANADA N0K 1M0
Tel: 800-561-3164

VISIT US ONLINE AT BOSHART.COM

For more information on installation,
adjustment, repair & operation, visit
Boshart Knowledge Base at
SUPPORT.BOSHART.COM

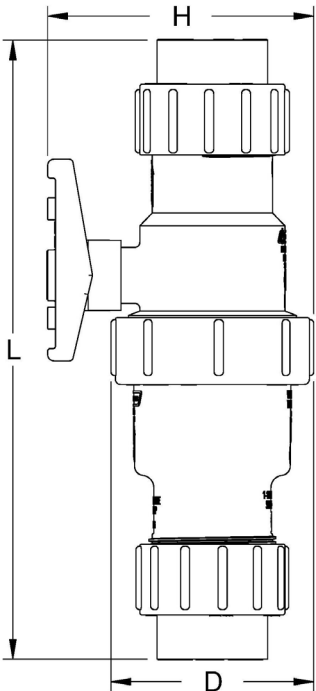
© 2025 Boshart Industries Inc. All Rights Reserved.

BII-17(Q)SCBV-UC-0425(131CC)V2

Slip True Union:

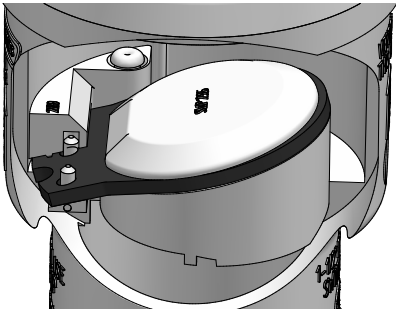


17SCBV-20TU

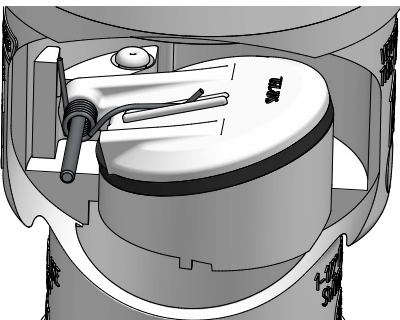


Component	Name
1	Slip Connector
2	O-Ring (AS568A-329)
3	Slip Nut
4	Ball Valve Union Nut
5	O-Ring (AS568A-234)
Boshart part numbers on Page 5	

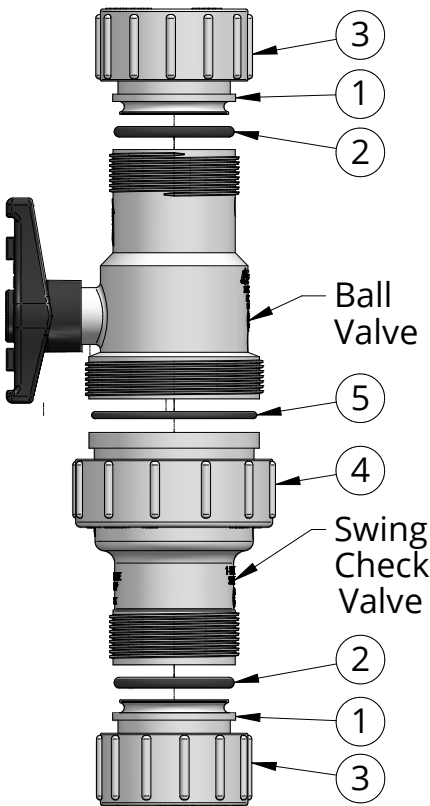
Valve Body Internal View:



17SCBV Series - Gravity Closing
(Rubber Flapper & Angled Seat)



17QSCBV Series - Quiet Spring Assist
Closing (SS Mechanical Hinge Pin)



DIMENSIONS											
Part No.	Type	Inlet Connection	Outlet Connection	L		H		D		Weight	
				in	mm	in	mm	in	mm	lb	grams
17SCBV-15TU	Standard	1-1/2" True Union Slip	1-1/2" True Union Slip	12.59	319.79	5.39	136.91	4.11	104.39	2.03	920.79
17QSCBV-15TU	Quiet										
17SCBV-20TU	Standard	2" True Union Slip	2" True Union Slip	13.90	353.06	6.17	156.72	4.56	115.82	2.91	1319.9
17QSCBV-20TU	Quiet										

BOSHART

INDUSTRIES

25 Whaley Avenue, PO Box 310

Milverton, ON CANADA N0K 1M0

Tel: 800-561-3164

VISIT US ONLINE AT BOSHART.COM

For more information on installation, adjustment, repair & operation, visit Boshart Knowledge Base at

SUPPORT.BOSHART.COM

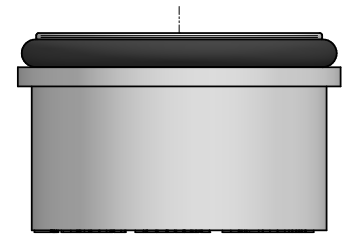
REPLACEMENT PARTS:

REPLACEMENT PARTS - SLIP						
Part No.	Type	Slip Connector	Slip Nut	Ball Valve Union Nut	Slip Connector O-Ring	Ball Valve O-Ring
17SCBV-15SU	Standard	35-CONN15SL	35-N15SL	35-BV15-UN*	35-CONN15SL-OR (AS568A-329)	35-SC15-VBOR* (AS568A-234)
17QSCBV-15SU	Quiet					
17SCBV-20SU	Standard	35-CONN20SL	35-N20SL	35-BV20-UN*	35-CONN20SL-OR (AS568A-332)	35-SC20-VBOR* (AS568A-238)
17QSCBV-20SU	Quiet					

REPLACEMENT PARTS - COMPRESSION					
Part No.	Type	Compression Gasket	Compression Nut	Ball Valve Union Nut	O-Ring
17SCBV-15UC	Standard	(2) 35-CONN15CPG	(2) 35-N15CP	35-BV15-UN*	35-SC15-VBOR* (AS568A-234)
17QSCBV-15UC	Quiet				
17SCBV-20UC	Standard	(2) 35-CONN20CPG	(2) 35-N20CP	35-BV20-UN*	35-SC20-VBOR* (AS568A-238)
17QSCBV-20UC	Quiet				

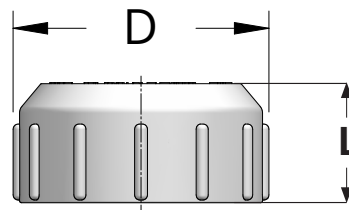
*both slip and compression parts use common ball valve union nut & O-rings

REPLACEMENT PARTS - TRUE UNION SLIP				
Part No.	Type	Slip Connector	O-Ring	Slip Union Nut
17SCBV-15TU	Standard	(2) 35-CONN15SL	(2) 35-CONN15SL-OR AS568A-329	(2) 35-N15SL
17QSCBV-15TU	Quiet			
17SCBV-20TU	Standard	(2) 35-CONN20SL	(2) 35-CONN20SL-OR AS568A-332	(2) 35-N20SL
17QSCBV-20TU	Quiet			

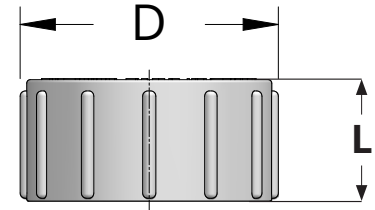


Slip Connector with O-ring

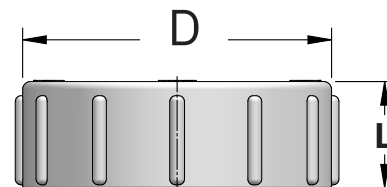
Replacement Nuts	Diameter		Length	
	in	mm	in	mm
Compression Nut				
35-N15CP	3.192	81.08	1.525	38.74
35-N20CP	3.706	94.13	1.725	43.82
Slip Union Nut				
35-N15SL	3.131	79.53	1.438	36.53
35-N20SL	3.668	93.17	1.725	43.82
Ball Valve Union Nut				
35-BV15-UN	4.121	104.67	1.355	34.42
35-BV20-UN	4.678	118.82	1.355	34.42



Compression Nut



Slip Union Nut



Ball Valve Union Nut

BOSHART
INDUSTRIES

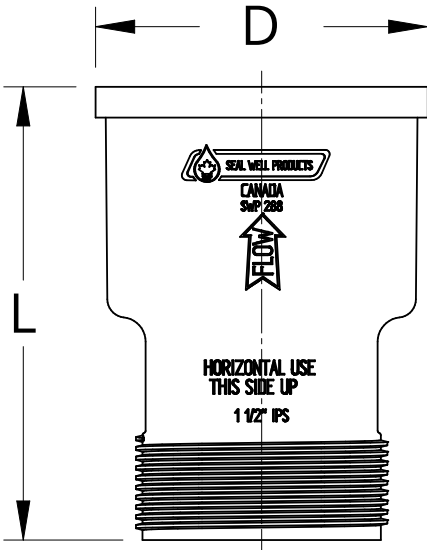
25 Whaley Avenue, PO Box 310
Milverton, ON CANADA N0K 1M0
Tel: 800-561-3164

VISIT US ONLINE AT BOSHART.COM

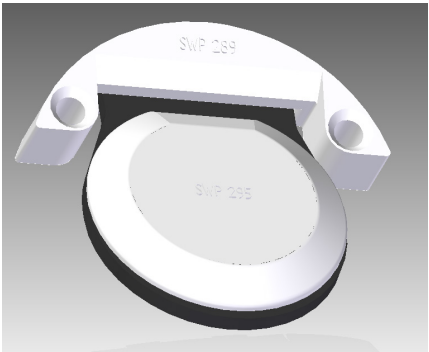
For more information on installation,
adjustment, repair & operation, visit
Boshart Knowledge Base at
SUPPORT.BOSHART.COM



SWING CHECK BODY/FLAPPER ASSEMBLY REPLACEMENT PARTS - STANDARD & QUIET						
Part No.	Swing Check Body/Flapper Assembly Type (Any Connection)	Size	Length (L)		Diameter (D)	
			in	mm	in	mm
35-SCA15	Standard (Gravity Closing)	1-1/2"	4.64	117.86	3.40	86.36
35-QSCA15	Quiet (Spring Assisted Hinged Closing)					
35-SCA20	Standard (Gravity Closing)	2"	5.35	135.89	3.92	99.57
35-QSCA20	Quiet (Spring Assisted Hinged Closing)					
Body only - O-Ring must be purchased separately						



Standard (Gravity Closing Flapper)



Quiet (Spring Assisted Hinged Closing Flapper)

