

(SS)HL & (SS)HT SERIES - HYDRANT FITTINGS

FEATURES:

- Commonly used to connect waterlines to a hydrant underground.
- The pad raises the pipe and clamp off of the ground surface to prevent abrasion and wear.
- Tapped fittings can be used to install several types of attachments including valves, pressure gauges, and temperature sensors.

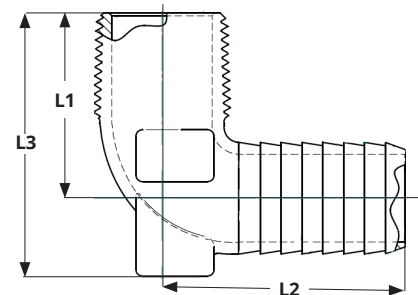
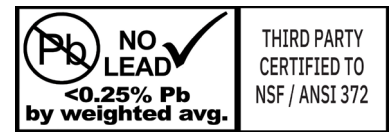
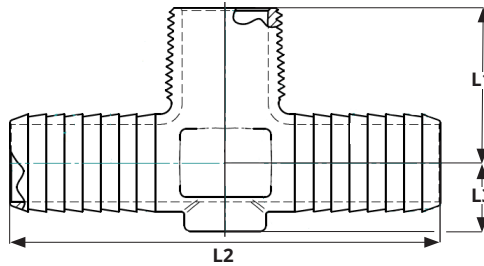
SPECIFICATIONS:

- For use with ASTM D2239 PE plastic pipe (Standard Specification for Polyethylene (PE) Pipe (SIDR-PR) Based on Controlled Inside Diameter).
- Designed for use with 50 PSI utility pipe, 75 and 100 PSI pipe, and any other PE pipe with inside diameters conforming to ASTM D2239.
- System operating pressures and temperatures are limited by the maximum operating pressures and temperatures of the ASTM D2239 PE pipe. Always refer to the PE pipe manufacturer's pressure and temperature ratings.
- Insert fittings are intended for cold water applications, including irrigation, well service, and potable water applications. These products are not to be used with compressed gases.
- Fittings must be protected from freezing temperatures where fluid expansion due to freezing could occur.



SSHL & SSHT SERIES - 304SS HYDRANT FITTINGS

- Made from 304 Stainless Steel
- NSF/ANSI Standard 372 Certified (Drinking Water System Components - Lead Content) - SS alloys do not contain any Pb, 0.00% Pb.



DIMENSIONS									
Part No.	Size	No. of Barbs	L1		L2		L3		Weight
			in	mm	in	mm	in	mm	
90° Elbow - MPT x Poly Insert Barb									
SSHL-075	3/4"	6	1.39	35.3	2.00	50.8	1.96	49.8	128
SSHL-075-100	3/4" x 1"	7	1.50	38.1	2.21	56.1	2.25	57.2	161
SSHL-100	1"	7	1.79	45.5	2.34	59.4	2.54	64.5	218
SSHL-100-125	1" x 1-1/4"	7	1.96	49.8	2.39	60.7	2.88	73.2	308
SSHL-125	1-1/4"	7	1.94	49.3	2.53	64.3	2.87	72.9	343
Tee- Poly Insert Barb x Poly Insert Barb x MPT									
SSHT-075	3/4"	6	1.38	35.1	3.99	101.3	0.58	14.7	170
SSHT-075-100	1" x 1" x 3/4"	6	1.51	38.4	4.50	114.3	0.75	19.1	250
SSHT-100	1"	7	1.71	43.4	4.75	120.7	0.75	19.1	294



25 Whaley Avenue, PO Box 310, Milverton, ON CANADA N0K 1M0
Tel: 800-561-3164

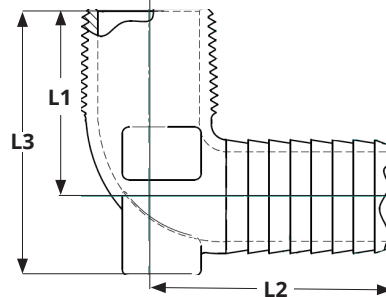
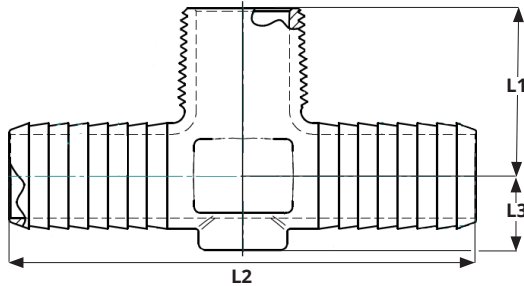
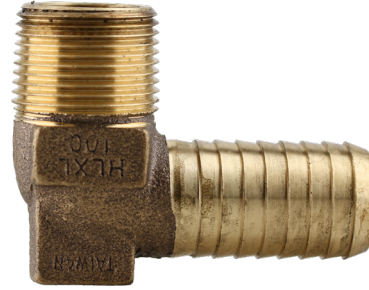
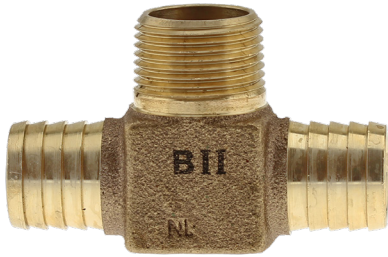
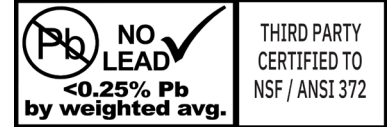
VISIT US ONLINE AT BOSHART.COM

For more information on installation, adjustment, repair & operation, visit Boshart Knowledge Base at SUPPORT.BOSHART.COM



HL & HT SERIES - NL BRONZE HYDRANT FITTINGS

- Made from C89833 or C89844 no lead bronze
- Tapped fittings have a 1/4" FPT port which conforms to ASME B1.20.1
- NSF/ANSI Standard 372 Certified (Drinking Water System Components - Lead Contant) - No lead test criteria <0.25% Pb by weighted average.



DIMENSIONS									
Part No.	Size	No. of Barbs	L1		L2		L3		Weight g
			in	mm	in	mm	in	mm	
90° Elbow - MPT x Poly Insert Barb									
HL-075-100NL	3/4" x 1"	6	1.62	41.1	1.97	50.0	2.48	63.0	199
HL-075-125NL	3/4" x 1-1/4"	6	1.82	46.2	2.42	61.5	2.81	71.4	446
HL-075NL	3/4"	5	1.46	37.1	1.88	47.8	2.05	52.1	155
HL-100-125-NL	1" x 1-1/4"	6	1.80	45.7	2.45	62.2	2.65	67.3	416
HL-100NL	1"	5	1.54	39.1	1.99	50.5	2.40	61.0	242
HLU-NL	3/4" x (1-1/4" x 1")	6	1.83	46.5	3.94	100.1	2.80	71.1	501
HLW-NL	1" x (1-1/4" x 1")	6	1.84	46.7	4.04	102.6	2.81	71.4	510
Extra Long 90° Elbow - MPT x Poly Insert Barb									
HLXL-075-100NL	3/4" x 1"	8	1.50	38.1	2.50	63.5	2.25	57.2	240
HLXL-100NL	1"	8	1.76	44.7	2.60	66.0	2.54	64.5	297
Extra Long Tapped 90° Elbow - MPT x Poly Insert Barb									
HLXL-100-TNL	1"	8	1.76	44.7	2.60	66.0	2.52	64.0	273
Tapped 90° Elbow - MPT x Poly Insert Barb									
HL-075-100-TNL	3/4" x 1"	6	1.61	40.9	1.97	50.0	2.45	62.2	203
HL-100-TNL	1"	5	1.65	41.9	2.14	54.4	2.45	62.2	258
Tee - Poly Insert Barb x Poly Insert Barb x MPT									
HT-075-100NL	1" x 1" x 3/4"	6	1.55	39.4	4.14	105.2	0.62	15.7	253
HT-075-125NL	1-1/4"x1-1/4"x3/4"	7	1.60	40.6	4.50	114.3	0.90	22.9	440
HT-075NL	3/4"	4	1.63	41.4	3.83	97.3	0.59	15.0	206
HT-100-125NL	1-1/4"x1-1/4"x1"	7	1.66	42.2	4.70	119.4	0.94	23.9	472
HT-100NL	1"	4	1.57	39.9	3.81	96.8	0.70	17.8	308



25 Whaley Avenue, PO Box 310, Milverton, ON CANADA N0K 1M0
Tel: 800-561-3164

VISIT US ONLINE AT BOSHART.COM

For more information on installation, adjustment, repair & operation, visit Boshart Knowledge Base at SUPPORT.BOSHART.COM



(SS)HL & (SS)HT SERIES PRESSURE & TEMPERATURE RATINGS

PRESSURE & TEMPERATURE RATINGS FOR 304 STAINLESS STEEL HYDRANT FITTINGS			
Temperature		Pressure	
°F	°C	PSI	bar
73.4	23	400	27.6
150	65.5	300	20.7
200	93.3	265	18.3
250	121.1	225	15.5
300	148.8	165	11.4
350	176.6	150	10.3
400	204.4	125	8.6



PRESSURE & TEMPERATURE RATINGS FOR NO LEAD BRONZE HYDRANT FITTINGS			
Temperature		Pressure	
°F	°C	PSI	bar
73.4	23	400	27.6
150	65.5	200	13.8
200	93.3	190	13.1
250	121.1	180	12.4
300	148.8	165	11.4
350	176.6	150	10.3
400	204.4	125	8.6



For operating pressures over the stated maximum pressure or for temperatures over 73.4 °F (23 °C), independent testing by the end user is recommended. It is solely the user's responsibility to determine the suitability of the fitting for the intended service.

Pressure and temperature rating charts should be used as a guide only.

BOSHART
INDUSTRIES

25 Whaley Avenue, PO Box 310, Milverton, ON CANADA N0K 1M0
Tel: 800-561-3164

VISIT US ONLINE AT BOSHART.COM

For more information on installation, adjustment, repair & operation, visit Boshart Knowledge Base at SUPPORT.BOSHART.COM

