

# SSBV304 SERIES - 304 STAINLESS STEEL 1000 CWP BALL VALVE (THREADED)

## APPLICATIONS:

- For water well, plumbing, irrigation, commercial, and industrial applications.
- Not to be used in steam, or combustible gas applications.

## SPECIFICATIONS:

- Threads conform to ANSI/ASME B1.20.1
- Full port design
- Two piece investment cast body
- Blow-out proof stem
- Solid stainless steel ball - sizes 1/4" to 1-1/4"
- Hollow stainless steel ball - sizes 1-1/2" to 4"
- Stainless steel handle with blue plastic sleeve



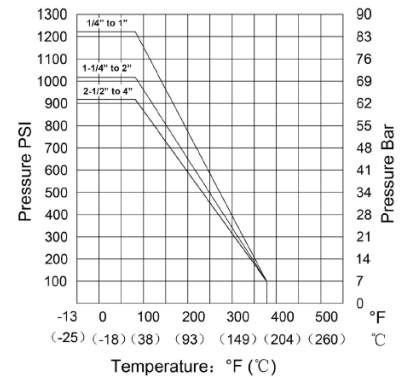
## CERTIFICATION:

- NSF/ANSI Standard 372 Certified (Drinking Water System Components - Lead Content - Stainless Steel alloys do not contain any lead 0.00% Pb)

## RATINGS:

- Maximum Pressure Rating: 1000 PSI CWP. CWP (Cold Working Pressure) is an indication of the pressure rating for valves at a temperature range of up to 100 °F (37 °C). The pressure rating drops as them temperature increases; for example at 375°F the max pressure rating drops to 100 PSI. Refer to the Pressure-Temperature chart below.
- Maximum Temperature Rating: 248 °F (120 °C)

## PRESSURE AND TEMPERATURE:

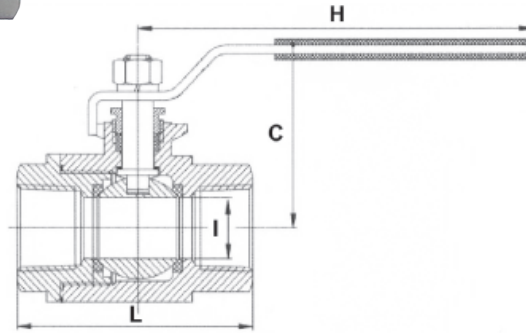
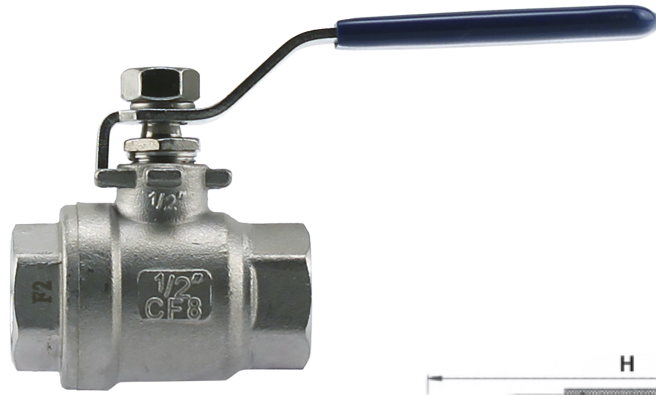


DIMENSIONS											
Part No.	Description	I		H		L		C		Weight	
		in	mm	in	mm	in	mm	in	mm	lbs	grams
SSBV304-02	1/4" FxF	0.43	11.00	4.05	103.00	2.00	51.00	2.00	51.00	0.419	190
SSBV304-03	3/8" FxF	0.49	12.50	4.05	103.00	2.00	51.00	2.00	51.00	0.419	190
SSBV304-05	1/2" FxF	0.59	15.00	4.05	103.00	2.48	63.00	2.08	53.00	0.507	230
SSBV304-07	3/4" FxF	0.78	20.00	4.96	126.00	2.91	74.00	2.55	65.00	0.750	340
SSBV304-10	1" FxF	0.98	25.00	5.66	144.00	3.38	86.00	3.03	77.00	1.168	530
SSBV304-12	1-1/4" FxF	1.26	32.00	5.66	144.00	3.85	98.00	3.22	82.00	1.984	900
SSBV304-15	1-1/2" FxF	1.49	38.00	7.44	189.00	4.17	106.00	3.66	93.00	2.646	1200
SSBV304-20	2" FxF	1.96	50.00	7.44	189.00	4.80	122.00	3.93	100.00	3.814	1730
SSBV304-25	2-1/2" FxF	2.55	65.00	8.81	224.00	6.26	159.00	4.64	118.00	8.444	3830
SSBV304-30	3" FxF	2.99	76.00	8.81	224.00	7.16	182.00	5.07	129.00	12.65	5740
SSBV304-40	4" FxF	3.70	94.00	11.61	295.00	8.89	226.00	6.53	166.00	23.59	10700



25 Whaley Avenue, PO Box 310, Milverton, ON CANADA N0K 1M0  
Tel: 800-561-3164

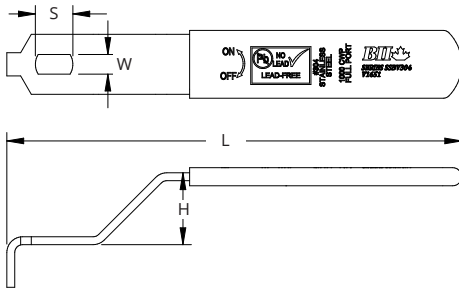
[boshart.com](http://boshart.com) ♦ [blog.boshart.com](http://blog.boshart.com)



MATERIAL LIST	
Part Name	Material
Body	CF8 304 Stainless Steel
Cap	CF8 304 Stainless Steel
Ball	CF8 304 Stainless Steel
Stem	304 Stainless Steel
Stem Packing	PTFE (Polytetrafluoroethylene)
Gasket	PTFE
Washer	PTFE
Seat	PTFE
Gland Nut	304 Stainless Steel
Lock Washer	304 Stainless Steel
Nut	304 Stainless Steel
Handle	304 Stainless Steel

### REPLACEMENT HANDLE KITS (Sold Separately):

- Each kit (including one handle, one nut, and one washer) is individually packaged in a bag.



Part No.	Fits Valve Size	DIMENSIONS								SS Locknut	SS Split Washer
		L		H		S		W			
		in	mm	in	mm	in	mm	in	mm		
RPSSBV304-H1V1651	1/4" to 3/8"	4.055	103	0.768	19.5	0.323	8.2	0.197	5.0	M8x 1.25	M8
RPSSBV304-H2V1651	1/2"	3.858	98	0.650	16.5	0.323	8.2	0.197	5.0		
RPSSBV304-H3V1651	3/4"	4.055	103	0.689	17.5	0.323	8.2	0.197	5.0		
RPSSBV304-H4V1651	1"	4.724	120	0.866	22	0.441	11.2	0.236	6	M10 x 1.5	M10
RPSSBV304-H5V1651	1-1/4"	5.827	148	1.142	29	0.441	11.2	0.315	8		
RPSSBV304-H6V1651	1-1/2" to 2"	7.089	180	1.102	28	0.500	12.7	0.354	9	M12 x 1.75	M12
RPSSBV304-H7V1651	2-1/2" to 3"	9.646	245	1.654	42	0.795	20.2	0.394	10	M16 x 2.0	M16
RPSSBV304-H8V1651	4"	11.34	288	1.654	42	0.992	25.2	0.551	14	M20 x 2.5	M20

For more information on installation, adjustment, repair & operation, visit Boshart Knowledge Base at

SUPPORT.BOSHART.COM



**BOSHART**  
INDUSTRIES

25 Whaley Avenue, PO Box 310, Milverton, ON CANADA N0K 1M0  
Tel: 800-561-3164

boshart.com ♦ blog.boshart.com