

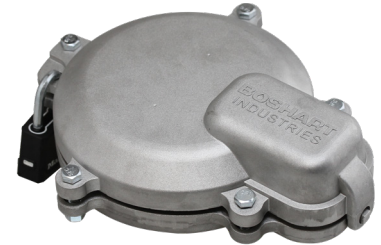
# WTCC-A (ALUMINUM) & WTCC-C (CAST IRON) WATERTIGHT TWO PIECE LOCKING WELL CAPS

## FEATURES:

- For use on steel or PVC well casings.
- 1" wide gasket provides a positive seal even when the well casing is not cut perpendicular. This heavy-duty, one-piece, molded gasket seal ensures a reliable watertight and vermin proof seal between the cover and lower ring as well as between the lower ring and well casing.
- Two large, 3/4" diameter, 24 mesh screened air vents exceed PAS-97 requirements ensuring the well can breathe during the pumping cycle as the water level is drawn down and replenishes to the static water level when the pump stops.
- Easy to install and maintains easy access to the well for maintenance.
- Ground bolt supplied to facilitate grounding of the submersible pump and steel well casing. A set bolt in the lower ring secures the lower ring to the well casing and makes a grounding bond to steel well casings.
- Locking feature provides a secure, tamper-proof installation (padlock not included).
- Durable black powder coat paint finish on cast iron well caps.



ASSE Standard  
#1093-2019 &  
WSC Standard  
PAS-97 (2019)



**WTCC-Axxx  
Aluminum Series**

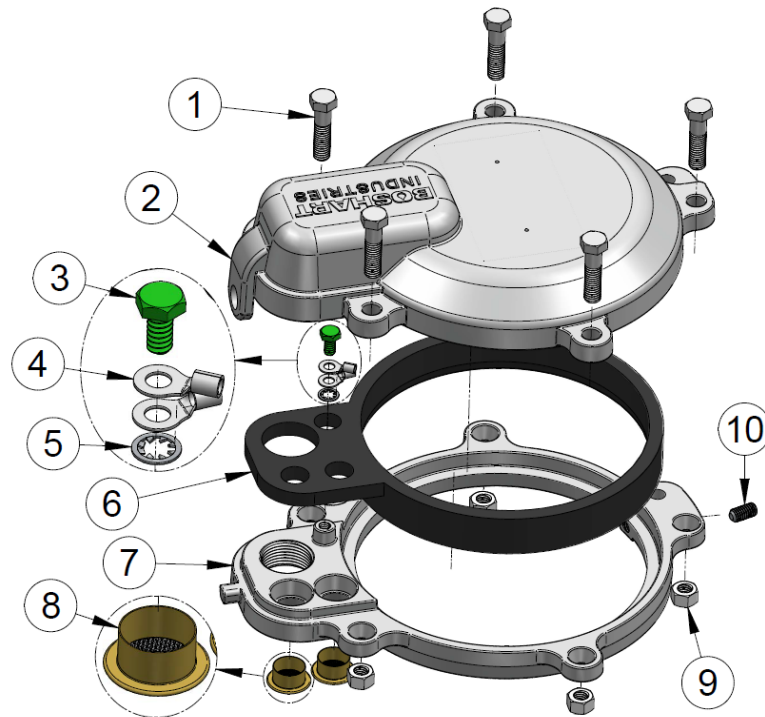


**WTCC-Cxxx  
Cast Iron Series**

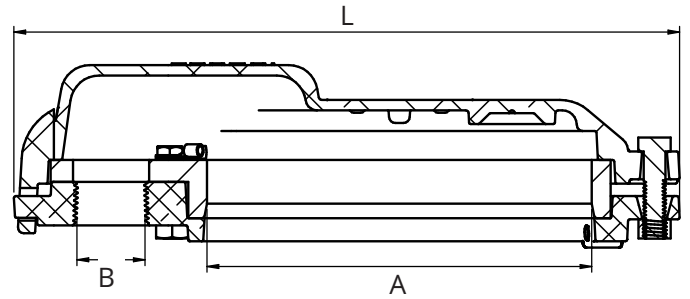
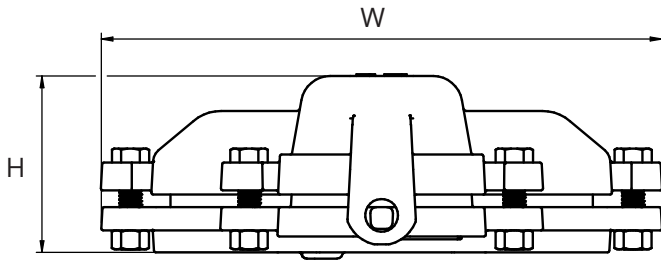
## CERTIFICATIONS & SPECIFICATIONS:

- ASSE Standard #1093-2019 & WSC Standard PAS-97 (2019) Certified
  - Section 3.5 Tamper Resistance for Sanitary Well Caps
  - Section 3.6 Venting for Sanitary Well Caps
  - Section 3.7 Water-Resistant Capability for Sanitary Well Caps

MATERIAL LIST			
Part No.	Qty.	Part Name	Material
1	5	3/8 - 16 UNC x 1-1/2" Long Hex Bolt	Zinc Plated Steel
2	1	Top Cover Casting	ADC 10 Aluminum (WTCC-Axxx)
			ASTM A48, Class20 Gray Cast Iron (WTCC-Cxxx)
3	1	1/4 - 20 UNC x 1/2" Long Ground Hex Bolt	Stainless Steel 18.8 - Zinc Plated Green
4	2	Wire Terminals for Up to 8 Gauge Wire for 1/4" Ground Bolt	Tin Plated Copper
5	1	1/4" Retaining Washer - ASME B18.21.1	Stainless Steel 18.8
6	1	Rubber Gasket	Styrene-butadiene rubber (SBR)
7	1	Bottom Ring Casting	ADC 10 Aluminum (WTCC-Axxx)
			ASTM A48, Class20 Gray Cast Iron (WTCC-Cxxx)
8	2	Vents - 0.354 in <sup>2</sup> Total Open Area	Brass Housing with 24 Stainless Steel Mesh
9	5	3/8 - 16 UNC Nut	Zinc Plated Steel
10	1	5/16 - 18 UNC x 5/8" Long Set Screw - Fits 5/32" Allen Wrench	Stainless Steel 18.8



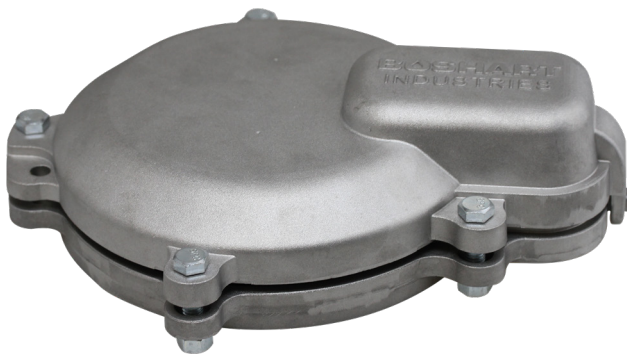
# WTCC-A & WTCC-C WELL CAP DIMENSIONS:



DIMENSIONS										
Part No.		Nominal Well Casing size (I.D.)	Fits Well Casing O.D.	Conduit Connection	W		L		H	
Cast Iron	Aluminum		A	B (FPT)	inches	mm	inches	mm	inches	mm
WTCC-C04	-----	4"	4-1/2"	1"	7.596	192.94	9.366	237.90	3.035	77.09
WTCC-C045	-----	4-1/2"	5"	1"	8.088	205.44	9.810	249.17	3.035	77.09
WTCC-C05	WTCC-A05	5"	5-9/16"	1"	8.642	219.51	10.443	265.25	3.035	77.09
WTCC-C056	-----	5-5/8"	6"	1"	9.073	230.45	10.881	276.38	3.035	77.09
WTCC-C06	WTCC-A06	6" or 6-1/4"	6-5/8"	1"	9.657	245.29	11.454	290.93	3.035	77.09
WTCC-C06-12	WTCC-A06-12	6" or 6-1/4"	6-5/8"	1-1/4"	9.657	245.29	11.454	290.93	3.035	77.09
WTCC-C066-12*	-----	6-5/8"	7"	1-1/4"	10.097	256.46	11.921	302.79	3.035	77.09
WTCC-C08-12	-----	8"	8-5/8"	1-1/4"	11.658	296.11	13.506	343.05	3.035	77.09

Well Caps are described in industry standard by Nominal Well Casing Size (ID). For example, WTCC-C06, fits a Nominal Well Casing Size with 6 or 6-1/4" ID, the cap is designed to seal on the 6-5/8" (OD) of the Well Casing.

\*WTCC-C066-12 well cap will also seal on a 6.9" O.D. well casing. It is ideal for use on PVC SDR21 6.125" I.D. x 6.9" O.D. well casing.



**WTCC-Axxx**  
Aluminum Series



**WTCC-Cxxx**  
Cast Iron Series



25 Whaley Avenue, PO Box 310, Milverton, ON CANADA N0K 1M0  
Tel: 800-561-3164

[boshart.com](http://boshart.com) ♦ [blog.boshart.com](http://blog.boshart.com)

# WTCC-A & WTCC-C WELL CAP GASKETS:

<b>GASKET PART NUMBERS (Available as Replacement Part)</b>		
<b>Part No.</b>		<b>Gasket Part Number</b>
<b>Cast Iron</b>	<b>Aluminum</b>	
WTCC-C04	-----	RP-WTCC-G04
WTCC-C045	-----	RP-WTCC-G045
WTCC-C05	WTCC-A05	RP-WTCC-G05
WTCC-C056	-----	RP-WTCC-G056
WTCC-C06	WTCC-A06	RP-WTCC-G06
WTCC-C06-12	WTCC-A06-12	RP-WTCC-G06
WTCC-C066-12	-----	RP-WTCC-G050
WTCC-C08-12	-----	RP-WTCC-G051

For more information on installation,  
adjustment, repair & operation, visit  
Boshart Knowledge Base at

[SUPPORT.BOSHART.COM](https://support.boshart.com)



25 Whaley Avenue, PO Box 310, Milverton, ON CANADA N0K 1M0  
Tel: 800-561-3164

[boshart.com](https://boshart.com) ♦ [blog.boshart.com](https://blog.boshart.com)