

2-1/2" PRESSURE GAUGE PANEL MOUNTING FLANGE & U-CLAMP

FOR DRY, LIQUID FILLED (G), LEADED AND NO LEAD (NL) PRESSURE GAUGES (PGS25CBM, PGSC25CBM, PG25CBM-XXX-GNL, 2-PG25CBM-XXXXX-G, PGS25CBM-XXXXX-G, 2-PGV25CBM-XX-G, & 20PGC25CBM-XX-XXXG SERIES)

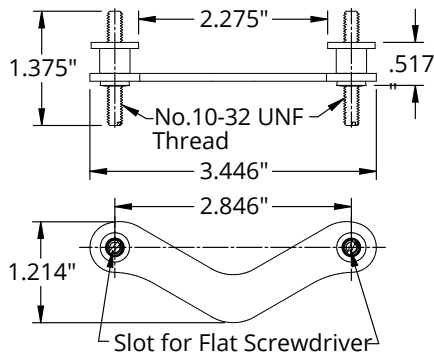
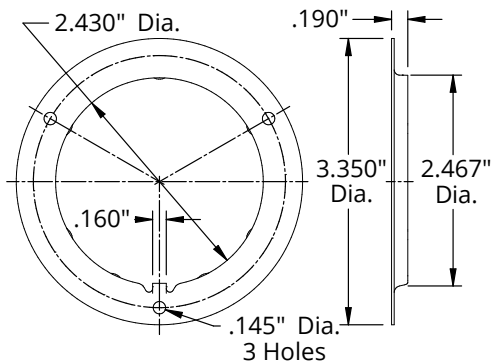
These mounting bracket options are accessories for mounting pressure gauges into panels. The Front Flange (PG25CBM-FF) system is an option where the bracket is visible from the front of the pressure gauge when installed. In the second option, a concealed rear mount U-clamp (PG25CBM-UC), the mounting clamp is hidden.

SPECIFICATIONS:

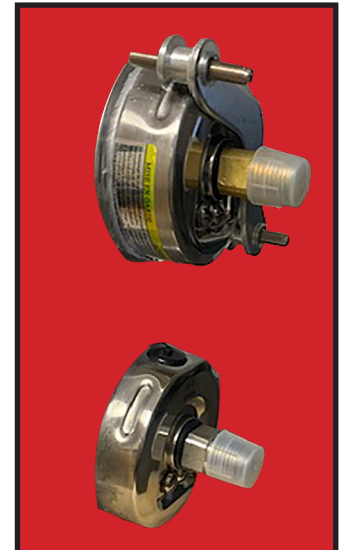
- PG25CBM-FF: For 2-1/2" dial back mount gauges - 3 holes
- PG25CBM-UC: For 2-1/2" dial

PG25CBM-FF

PG25CBM-UC

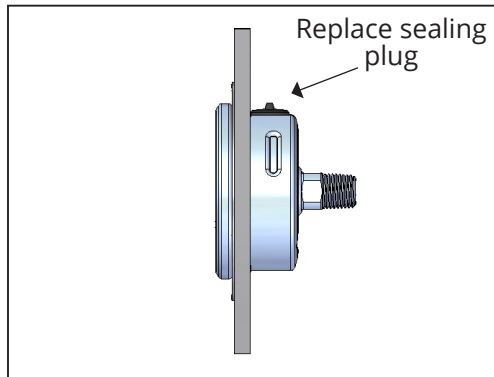
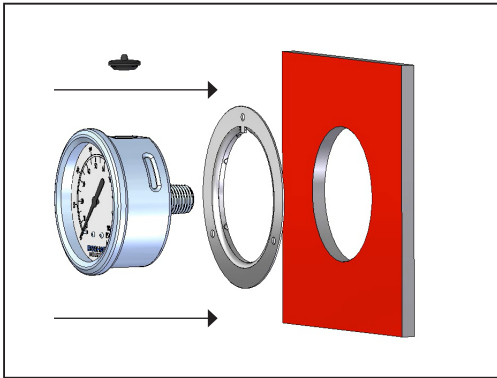


Completed Installation



INSTALLATION INSTRUCTIONS:

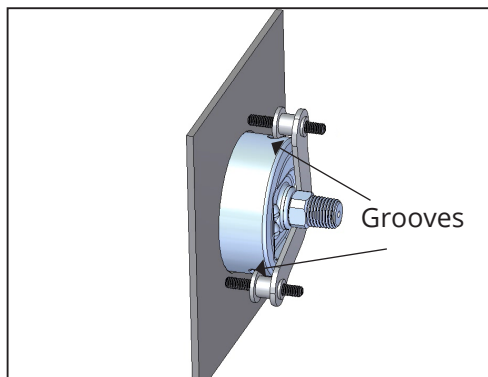
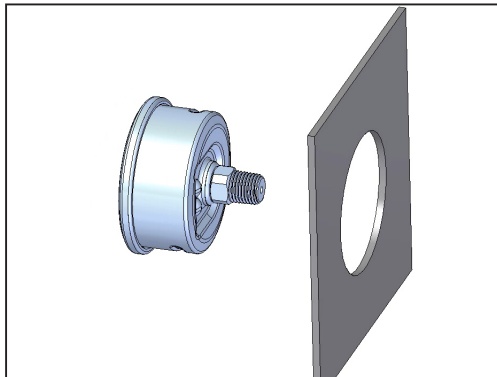
When installing a Front Flange design pressure gauge mounting bracket, remove the sealing plug on the top of the gauge so that it fits through the flange without any interference, and will be fully seated inside the flange. Then, replace the sealing plug. Install hardware from the front to secure the flange in place. After installation of the gauge, the sealing plug should be cut off to vent the gauge to equalize the gauge's internal pressure to the external atmospheric pressure. Failure to do so will affect the gauge's accuracy.



Completed Installation
Front View



When installing a U-clamp design pressure gauge mounting bracket, insert the gauge through the panel from the front. Then place the U-clamp bracket securely behind the gauge clipping it into the 2 grooves on the sides of the SS case, and install the hardware to secure it from the back. The U-clamp will not be visible from the front.



Completed Installation
Front View



For more information on installation,
adjustment, repair & operation, visit
Boshart Knowledge Base at

[SUPPORT.BOSHART.COM](https://support.boshart.com)



BOSHART
INDUSTRIES

© 2020 Boshart Industries Inc. All Rights Reserved.

25 Whaley Avenue, PO Box 310, Milverton, ON CANADA N0K 1M0
Tel: 800-561-3164

boshart.com ♦ blog.boshart.com

BII-PG25CBM-FF(UC)-1224(1090)