

# WTC-A (ALUMINUM) & WTC-C (CAST IRON) WATERTIGHT TWO PIECE LOCKING WELL CAPS

## FEATURES:

- For use on steel or PVC well casings.
- Double O-ring seal ensures a reliable watertight and vermin proof seal between the cover and lower ring as well as between the lower ring and well casing.
- Two large, 3/4" diameter, 24 mesh screened air vents exceed the PAS-97 requirements ensuring the well can breathe during the pumping cycle as the water level is drawn down and replenishes to the static water level when the pump stops.
- Easy to install and maintains easy access to the well for maintenance.
- Ground bolt is supplied to facilitate grounding of the submersible pump and steel well casing. 3 set bolts secure the lower rings to the well casing and make a grounding bond to steel well casings.
- Locking feature provides a secure, tamper-proof installation (padlock not included).
- Durable black powder coat paint finish on cast iron well caps.

## CERTIFICATIONS & SPECIFICATIONS:

- ASSE Standard #1093-2019 & WSC Standard PAS-97 (2019) Certified
  - Section 3.5 Tamper Resistance for Sanitary Well Caps
  - Section 3.6 Venting for Sanitary Well Caps
  - Section 3.7 Water-Resistant Capability for Sanitary Well Caps



ASSE Standard  
#1093-2019 &  
WSC Standard  
PAS-97 (2019)

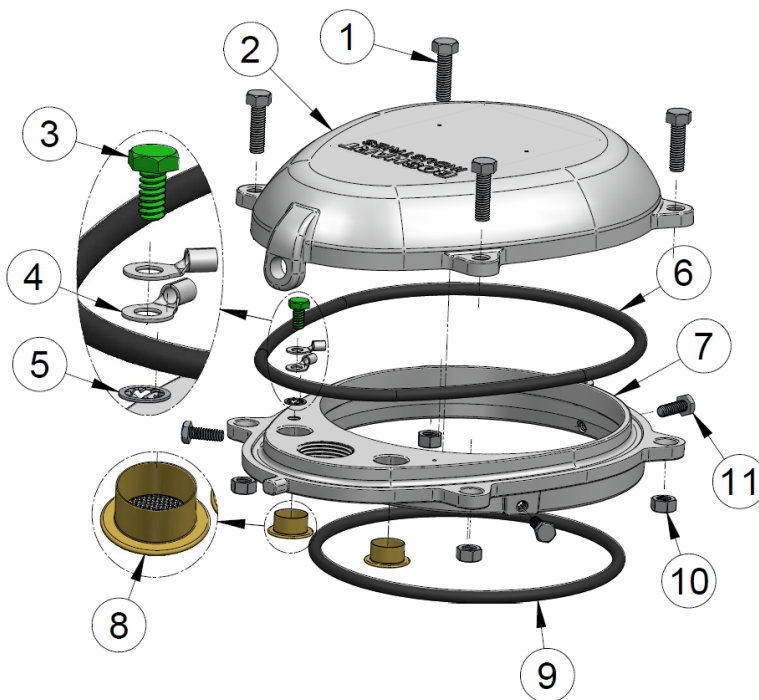


**WTC-Axxx**  
Aluminum Series

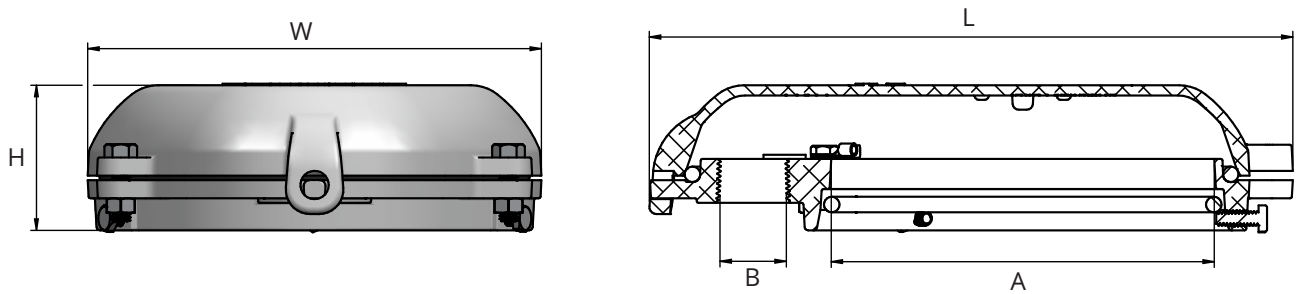


**WTC-Cxxx**  
Cast Iron Series

MATERIAL LIST			
Part No.	Qty.	Part Name	Material
1	4	5/16" - 18 UNC x 1-1/8" Long Hex Bolt	Stainless Steel 18.8
2	1	Top Cover Casting	ADC Aluminum (WTC-Axxx)
			ASTM A48, Class 20 Gray Cast Iron (WTC-Cxxx)
3	1	1/4" - 20 UNC x 1/2" Long Ground Hex Bolt	Stainless Steel 18.8 Zinc Plated Green
4	2	Wire Terminals for Up to 8 Gauge Wire for 1/4" Ground Bolt	Tin Plated Copper
5	1	1/4" Retaining Washer - ASME B18.21.1	Stainless Steel 18.8
6	1	Top Cover O-Ring 7.975" (202.57 mm) I.D. x 0.275" (6.99 mm) C.S.	Nitrile Butadiene Rubber (NBR)
7	1	Bottom Ring Casting	ADC 10 Aluminum (WTC-Axxx)
			ASTM A48, Class 20 Gray Cast Iron (WTC-Cxxx)
8	2	Vents - 0.354 in <sup>2</sup> Total Open Area	Brass Housing with 24 Stainless Steel Mesh
9	1	Casing O-Ring 6.475" (164.47 mm) I.D. x 0.275" (6.99 mm) C.S.	Nitrile Butadiene Rubber (NBR)
10	4	5/16 - 18 UNC Hex Nut	Stainless Steel 18.8
11	3	1/4 - 20 UNC x 3/4" Long Set Bolt	Stainless Steel 18.8



# WTC-A & WTC-C WELL CAP DIMENSIONS:



## DIMENSIONS

Part No.		Nominal Well Casing Size (I.D.)	Fits Well Casing O.D.	Conduit Connection	W		L		H	
					A	B (FPT)	in	mm	in	mm
-----	WTC-A05	5"	5-9/16"	1"	7.597	192.96	10.317	262.05	2.561	65.05
WTC-C06	WTC-A06	6"	6-5/8"	1"	8.015	203.58	11.366	288.70	2.561	65.05
	WTC-A06-BLK (Black Finish)									
WTC-C06-12	WTC-A06-12	6"	6-5/8"	1-1/4"	8.015	203.58	11.366	288.70	2.561	65.05



WTC-Axxx  
Aluminum Series



WTC-Cxxx  
Cast Iron Series

## O-Ring Part Numbers (Available as Replacement Part)

Part No.		O-Ring Part No	
Cast Iron	Aluminum	Top Cover	Well Casing
-----	WTC-A05	(AS568-441) B-WTC-TCOR-23.814	(AS568-433) B-WTC-WCOR-568-433
WTC-C06	WTC-A06	(AS568-445) B-WTC-TCOR-25.656	(AS568-439) B-WTC-WCOR-568-439
	WTC-A06-BLK (Black Finish)		
WTC-C06-12	WTC-A06-12		

For more information on installation, adjustment, repair & operation, visit Boshart Knowledge Base at [SUPPORT.BOSHART.COM](http://SUPPORT.BOSHART.COM)



**BOSHART**  
INDUSTRIES

25 Whaley Avenue, PO Box 310, Milverton, ON CANADA N0K 1M0  
Tel: 800-561-3164

[boshart.com](http://boshart.com) ♦ [blog.boshart.com](http://blog.boshart.com)