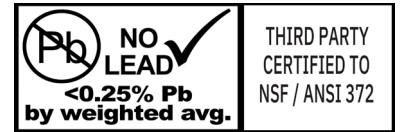


# CLASS 150 304 & 316 LIGHT STAINLESS STEEL FITTINGS - ISO 4144

## MATERIAL SPECIFICATIONS:

- ASTM A351 Austenitic Steel Castings (Standard Specification for Castings, Austenitic, for Pressure-Containing Parts)



## DIMENSIONAL SPECIFICATIONS:

- ISO 4144 Threaded Fittings (Standard Specification for Pipework - Stainless steel fittings threaded in accordance with ISO 7-1)

## THREAD SPECIFICATIONS:

- ANSI/ASME B1.20.1 Pipe Threads (Standard Specification for Pipe Threads, General Purpose, Inch)

## CERTIFICATION:

- NSF/ANSI 372 Certified - Stainless steel alloys do not contain any lead, 0.00% Pb (Drinking Water System Components - Lead Content)



ISO 4144 Pressure-Temperature Ratings for Class 150 304 & 316 Light Stainless Steel Pipe Fittings			
Temperature		Non-Shock Maximum Working Pressure	
°C	°F	PSI	bar
-20 to 40	-4 to 104	290	20
100	212	239	16.5
150	302	217	15
200	392	203	14
220	428	195	13.5

Material List		
Name	Percent of Composition	
	304	316
Carbon (C)	0.08 Max	0.08 Max
Manganese (Mn)	1.50 Max	1.50 Max
Silicone (Si)	2.00 Max	1.50 Max
Sulfur (S)	0.040 Max	0.040 Max
Phosphorus (P)	0.040 Max	0.040 Max
Chromium (Cr)	18.0-21.0	18.0-21.0
Nickel (Ni)	8.0-11.0	9.0-12.0
Molybdenum (Mo)	0.50 Max	2.0-3.0

1. Pressure for intermediate temperatures may be determined by interpolation.
2. Temperatures indicated are those of internal fluid.
3. Piping loads, stresses and moments are not taken into account.

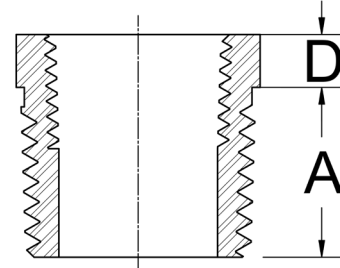


25 Whaley Avenue, PO Box 310, Milverton, ON CANADA N0K 1M0  
Tel: 800-561-3164

[boshart.com](http://boshart.com) ♦ [blog.boshart.com](http://blog.boshart.com)

# CLASS 150 304 & 316 LIGHT STAINLESS STEEL FITTINGS - ISO 4144

## Bushing - MPT x FPT



\* Octagon Head

304SS	316SS	Size	A		D	
			in	mm	in	mm
SS304B-0201	SS316B-0201	1/4" x 1/8"	0.41	10.5	0.16	4.0
SS304B-0301	SS316B-0301	3/8" x 1/8"	0.43	11.0	0.20	5.0
SS304B-0302	SS316B-0302	3/8" x 1/4"	0.43	11.0	0.20	5.0
SS304B-0501-3	SS316B-0501-3	1/2" x 1/8"	0.57	14.5	0.20	5.0
SS304B-0502	SS316B-0502	1/2" x 1/4"	0.57	14.5	0.20	5.0
SS304B-0503	SS316B-0503	1/2" x 3/8"	0.57	14.5	0.20	5.0
SS304B-0701-3	SS316B-0701-3	3/4" x 1/8"	0.61	15.5	0.22	5.5
SS304B-0702-3	SS316B-0702-3	3/4" x 1/4"	0.61	15.5	0.22	5.5
SS304B-0703	SS316B-0703	3/4" x 3/8"	0.61	15.5	0.22	5.5
SS304B-0705	SS316B-0705	3/4" x 1/2"	0.61	15.5	0.22	5.5
SS304B-1002-3*	SS316B-1002-3*	1" x 1/4"	0.71	18.0	0.24	6.0
SS304B-1003-3*	SS316B-1003-3*	1" x 3/8"	0.71	18.0	0.24	6.0
SS304B-1005*	SS316B-1005*	1" x 1/2"	0.71	18.0	0.24	6.0
SS304B-1007*	SS316B-1007*	1" x 3/4"	0.71	18.0	0.24	6.0
SS304B-1202-3*	SS316B-1202-3*	1-1/4" x 1/4"	0.81	20.5	0.26	6.5
SS304B-1203-3*	SS316B-1203-3*	1-1/4" x 3/8"	0.81	20.5	0.26	6.5
SS304B-1205-3*	SS316B-1205-3*	1-1/4" x 1/2"	0.81	20.5	0.26	6.5
SS304B-1207*	SS316B-1207*	1-1/4" x 3/4"	0.81	20.5	0.26	6.5
SS304B-1210*	SS316B-1210*	1-1/4" x 1"	0.81	20.5	0.26	6.5
SS304B-1505-3*	SS316B-1505-3*	1-1/2" x 1/2"	0.81	20.5	0.26	6.5
SS304B-1507-3*	SS316B-1507-3*	1-1/2" x 3/4"	0.81	20.5	0.26	6.5
SS304B-1510*	SS316B-1510*	1-1/2" x 1"	0.81	20.5	0.26	6.5
SS304B-1512*	SS316B-1512*	1-1/2" x 1-1/4"	0.81	20.5	0.26	6.5
SS304B-2005-3*	SS316B-2005-3*	2" x 1/2"	0.98	25.0	0.28	7.0
SS304B-2007-3*	SS316B-2007-3*	2" x 3/4"	0.98	25.0	0.28	7.0
SS304B-2010-3*	SS316B-2010-3*	2" x 1"	0.98	25.0	0.28	7.0
SS304B-2012*	SS316B-2012*	2" x 1-1/4"	0.98	25.0	0.28	7.0
SS304B-2015*	SS316B-2015*	2" x 1-1/2"	0.98	25.0	0.28	7.0



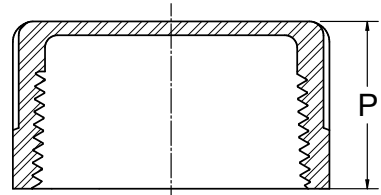
25 Whaley Avenue, PO Box 310, Milverton, ON CANADA N0K 1M0  
Tel: 800-561-3164

[boshart.com](http://boshart.com) ♦ [blog.boshart.com](http://blog.boshart.com)

# CLASS 150 304 & 316 LIGHT STAINLESS STEEL FITTINGS - ISO 4144

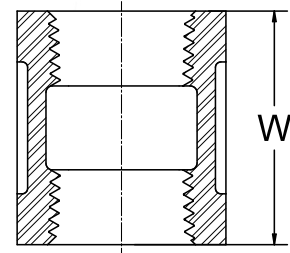
## Cap - FPT

304SS	316SS	Size	P	
			in	mm
SS304CA-01	SS316CA-01	1/8"	0.49	12.5
SS304CA-02	SS316CA-02	1/4"	0.63	16.0
SS304CA-03	SS316CA-03	3/8"	0.65	16.5
SS304CA-05	SS316CA-05	1/2"	0.83	21.0
SS304CA-07	SS316CA-07	3/4"	0.89	22.5
SS304CA-10	SS316CA-10	1"	1.02	26.0
SS304CA-12	SS316CA-12	1-1/4"	1.14	29.0
SS304CA-15	SS316CA-15	1-1/2"	1.14	29.0
SS304CA-20	SS316CA-20	2"	1.32	33.5



## Coupling - FPT

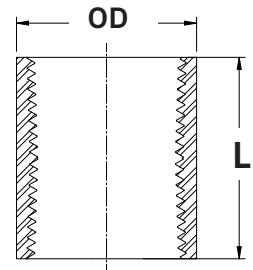
304SS	316SS	Size	W	
			in	mm
SS304C-01	SS316C-01	1/8"	0.67	17
SS304C-02	SS316C-02	1/4"	0.94	24
SS304C-03	SS316C-03	3/8"	0.98	25
SS304C-05	SS316C-05	1/2"	1.26	32
SS304C-07	SS316C-07	3/4"	1.38	35
SS304C-10	SS316C-10	1"	1.61	41
SS304C-12	SS316C-12	1-1/4"	1.77	45
SS304C-15	SS316C-15	1-1/2"	1.77	45
SS304C-20	SS316C-20	2"	2.13	54



## Class 150 Cast Machined Full Coupling - FPT x FPT

These couplings have a machined outside diameter, and are supplied with NPT tapered threads for pressure connections. Used in both plumbing and non-plumbing and structural applications where banded couplings are not desired, such as hand-railings.

304SS	Size	L		OD	
		in	mm	in	mm
SS304MC-05	1/2"	1.32	33.5	0.98	24.9
SS304MC-07	3/4"	1.44	36.5	1.20	30.5
SS304MC-10	1"	1.67	42.4	1.49	37.8
SS304MC-12	1-1/4"	1.83	46.5	1.85	47.0
SS304MC-15	1-1/2"	1.83	46.5	2.11	53.6
SS304MC-20	2"	2.19	55.6	2.60	66.0



**BOSHART**  
INDUSTRIES

© 2020 Boshart Industries Inc. All Rights Reserved.

25 Whaley Avenue, PO Box 310, Milverton, ON CANADA N0K 1M0  
Tel: 800-561-3164

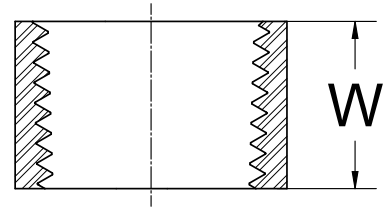
[boshart.com](http://boshart.com) ♦ [blog.boshart.com](http://blog.boshart.com)

# CLASS 150 304 & 316 LIGHT STAINLESS STEEL FITTINGS - ISO 4144

## Class 150 Cast Machined Half Coupling - FPT x FPT

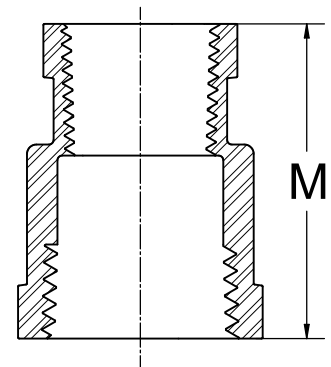
The SS304MHC Series Machined Half Couplings have a smooth, machined outside diameter, and are threaded with taper tapped threads (NPT) for pressure connections. Machined half couplings are commonly used to weld FPT connections to SS tanks.

304SS	Size	W	
		in	mm
SS304MHC-05	1/2"	0.59	15
SS304MHC-07	3/4"	0.65	16.5
SS304MHC-10	1"	0.77	19.5
SS304MHC-12	1-1/4"	0.85	21.5
SS304MHC-15	1-1/2"	0.85	21.5
SS304MHC-20	2"	1.02	26



## Reducing Coupling - FPT

304SS	316SS	Size	M	
			in	mm
SS304RC-0201	SS316RC-0201	1/4" x 1/8"	0.98	25
SS304RC-0301	SS316RC-0301	3/8" x 1/8"	1.02	26
SS304RC-0302	SS316RC-0302	3/8" x 1/4"	1.02	26
SS304RC-0501-3	SS316RC-0501-3	1/2" x 1/8"	1.34	34
SS304RC-0502	SS316RC-0502	1/2" x 1/4"	1.34	34
SS304RC-0503	SS316RC-0503	1/2" x 3/8"	1.34	34
SS304RC-0702-3	SS316RC-0702-3	3/4" x 1/4"	1.42	36
SS304RC-0703	SS316RC-0703	3/4" x 3/8"	1.42	36
SS304RC-0705	SS316RC-0705	3/4" x 1/2"	1.42	36
SS304RC-1003-3	SS316RC-1003-3	1" x 3/8"	1.65	42
SS304RC-1005	SS316RC-1005	1" x 1/2"	1.65	42
SS304RC-1007	SS316RC-1007	1" x 3/4"	1.65	42
SS304RC-1205-3	SS316RC-1205-3	1-1/4" x 1/2"	1.89	48
SS304RC-1207	SS316RC-1207	1-1/4" x 3/4"	1.89	48
SS304RC-1210	SS316RC-1210	1-1/4" x 1"	1.89	48
SS304RC-1505-3	SS316RC-1505-3	1-1/2" x 1/2"	2.05	52
SS304RC-1507-3	SS316RC-1507-3	1-1/2" x 3/4"	2.05	52
SS304RC-1510	SS316RC-1510	1-1/2" x 1"	2.05	52
SS304RC-1512	SS316RC-1512	1-1/2" x 1-1/4"	2.05	52
SS304RC-2005-3	SS316RC-2005-3	2" x 1/2"	2.28	58
SS304RC-2007-3	SS316RC-2007-3	2" x 3/4"	2.28	58
SS304RC-2010-3	SS316RC-2010-3	2" x 1"	2.28	58
SS304RC-2012	SS316RC-2012	2" x 1-1/4"	2.28	58
SS304RC-2015	SS316RC-2015	2" x 1-1/2"	2.28	58



**BOSHART**  
INDUSTRIES

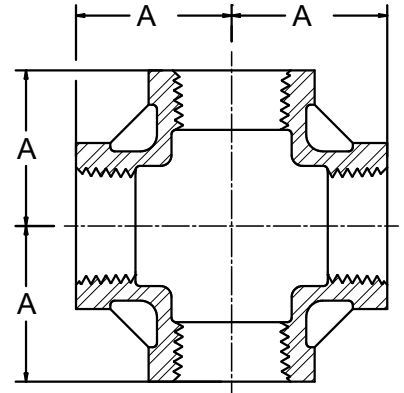
25 Whaley Avenue, PO Box 310, Milverton, ON CANADA N0K 1M0  
Tel: 800-561-3164

[boshart.com](http://boshart.com) ♦ [blog.boshart.com](http://blog.boshart.com)

# CLASS 150 304 & 316 LIGHT STAINLESS STEEL FITTINGS - ISO 4144

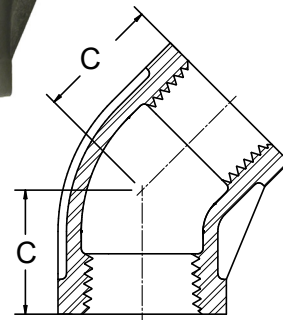
## Cross - FPT

304SS	Size	A	
		in	mm
SS304CR-01	1/8"	0.67	17
SS304CR-02	1/4"	0.75	19
SS304CR-03	3/8"	0.91	23
SS304CR-05	1/2"	1.06	27
SS304CR-07	3/4"	1.26	32
SS304CR-10	1"	1.50	38
SS304CR-12	1-1/4"	1.77	45
SS304CR-15	1-1/2"	1.89	48
SS304CR-20	2"	2.24	57



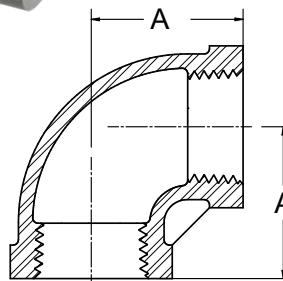
## 45° Elbow - FPT

304SS	316SS	Size	C	
			in	mm
SS304E4-01	SS316E4-01	1/8"	0.63	16
SS304E4-02	SS316E4-02	1/4"	0.67	17
SS304E4-03	SS316E4-03	3/8"	0.75	19
SS304E4-05	SS316E4-05	1/2"	0.83	21
SS304E4-07	SS316E4-07	3/4"	0.98	25
SS304E4-10	SS316E4-10	1"	1.14	29
SS304E4-12	SS316E4-12	1-1/4"	1.30	33
SS304E4-15	SS316E4-15	1-1/2"	1.46	37
SS304E4-20	SS316E4-20	2"	1.65	42



## 90° Elbow - FPT

304SS	316SS	Size	A	
			in	mm
SS304E-01	SS316E-01	1/8"	0.67	17
SS304E-02	SS316E-02	1/4"	0.75	19
SS304E-03	SS316E-03	3/8"	0.91	23
SS304E-05	SS316E-05	1/2"	1.06	27
SS304E-07	SS316E-07	3/4"	1.26	32
SS304E-10	SS316E-10	1"	1.50	38
SS304E-12	SS316E-12	1-1/4"	1.77	45
SS304E-15	SS316E-15	1-1/2"	1.89	48
SS304E-20	SS316E-20	2"	2.24	57



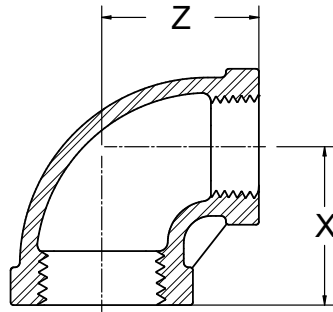
**BOSHART**  
INDUSTRIES

25 Whaley Avenue, PO Box 310, Milverton, ON CANADA N0K 1M0  
Tel: 800-561-3164

[boshart.com](http://boshart.com) ♦ [blog.boshart.com](http://blog.boshart.com)

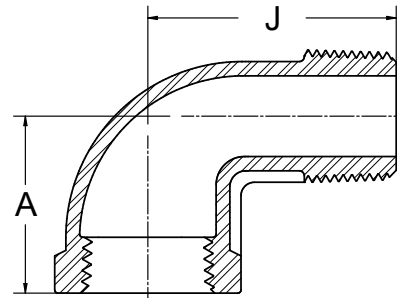
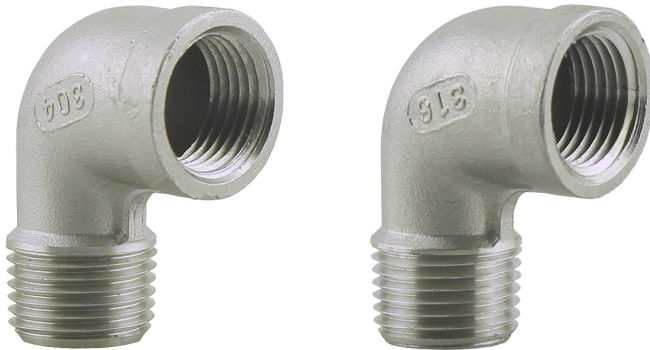
# CLASS 150 304 & 316 LIGHT STAINLESS STEEL FITTINGS - ISO 4144

## Reducing Elbow - FPT



304SS	Size	X		Z	
		in	mm	in	mm
SS304RE-1210	1-1/4" x 1"	1.57	40	1.65	42

## 90° Street Elbow - MPT x FPT

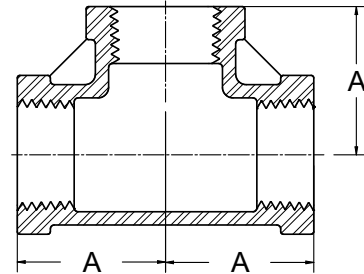


304SS	316SS	Size	A		J	
			in	mm	in	mm
SS304SE-01	SS316SE-01	1/8"	0.67	17	1.02	26
SS304SE-02	SS316SE-02	1/4"	0.75	19	1.06	27
SS304SE-03	SS316SE-03	3/8"	0.91	23	1.14	29
SS304SE-05	SS316SE-05	1/2"	1.06	27	1.38	35
SS304SE-07	SS316SE-07	3/4"	1.26	32	1.57	40
SS304SE-10	SS316SE-10	1"	1.50	38	1.81	46
SS304SE-12	SS316SE-12	1-1/4"	1.77	45	2.13	54
SS304SE-15	SS316SE-15	1-1/2"	1.89	48	2.24	57
SS304SE-20	SS316SE-20	2"	2.24	57	2.76	70

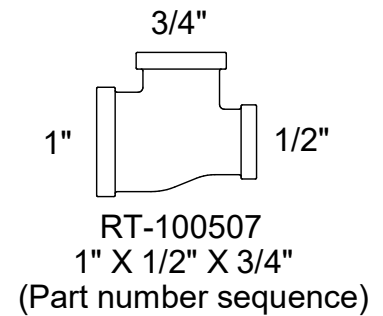
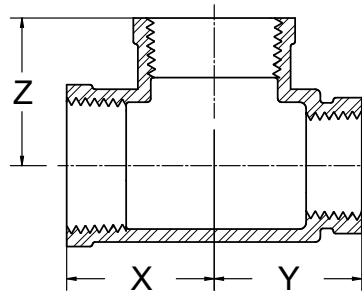
# CLASS 150 304 & 316 LIGHT STAINLESS STEEL FITTINGS - ISO 4144

## Tee - FPT

304SS	316SS	Size	A	
			in	mm
SS304T-01	SS316T-01	1/8"	0.67	17
SS304T-02	SS316T-02	1/4"	0.75	19
SS304T-03	SS316T-03	3/8"	0.91	23
SS304T-05	SS316T-05	1/2"	1.06	27
SS304T-07	SS316T-07	3/4"	1.26	32
SS304T-10	SS316T-10	1"	1.50	38
SS304T-12	SS316T-12	1-1/4"	1.77	45
SS304T-15	SS316T-15	1-1/2"	1.89	48
SS304T-20	SS316T-20	2"	2.24	57



## Reducing Tee - FPT



304SS	Size	X		Y		Z	
		in	mm	in	mm	in	mm
SS304RT-050502	1/2" x 1/2" x 1/4"	0.94	24	0.94	24	0.94	24
SS304RT-070507	3/4" x 1/2" x 3/4"	1.14	29	1.14	29	1.18	30
SS304RT-070702	3/4" x 3/4" x 1/4"	1.14	29	1.14	29	1.18	30
SS304RT-070705	3/4" x 3/4" x 1/2"	1.14	29	1.14	29	1.18	30
SS304RT-101005	1" x 1" x 1/2"	1.26	32	1.26	32	1.30	33
SS304RT-101007	1" x 1" x 3/4"	1.34	34	1.34	34	1.38	35
SS304RT-121207	1-1/4" x 1-1/4" x 3/4"	1.50	38	1.50	38	1.57	40
SS304RT-121210	1-1/4" x 1-1/4" x 1"	1.57	40	1.57	40	1.65	42
SS304RT-151507	1-1/2" x 1-1/2" x 3/4"	1.61	41	1.61	41	1.77	45
SS304RT-151510	1-1/2" x 1-1/2" x 1"	1.61	41	1.61	41	1.77	45
SS304RT-202007	2" x 2" x 3/4"	2.05	52	2.05	52	2.17	55
SS304RT-202010	2" x 2" x 1"	2.05	52	2.05	52	2.17	55

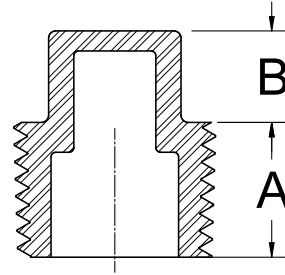


25 Whaley Avenue, PO Box 310, Milverton, ON CANADA N0K 1M0  
Tel: 800-561-3164

[boshart.com](http://boshart.com) ♦ [blog.boshart.com](http://blog.boshart.com)

# CLASS 150 304 & 316 LIGHT STAINLESS STEEL FITTINGS - ISO 4144

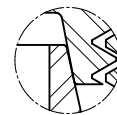
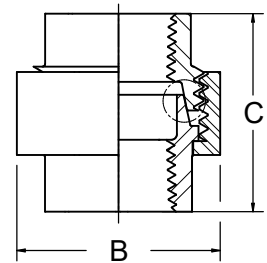
## Plug - MPT Cored



304SS	316SS	Size	A		B	
			in	mm	in	mm
SS304P-01	SS316P-01	1/8"	0.24	6.0	0.20	5
SS304P-02	SS316P-02	1/4"	0.33	8.5	0.20	5
SS304P-03	SS316P-03	3/8"	0.35	9.0	0.24	6
SS304P-05	SS316P-05	1/2"	0.45	11.5	0.28	7
SS304P-07	SS316P-07	3/4"	0.51	13.0	0.31	8
SS304P-10	SS316P-10	1"	0.57	14.5	0.43	11
SS304P-12	SS316P-12	1-1/4"	0.67	17.0	0.43	11
SS304P-15	SS316P-15	1-1/2"	0.67	17.0	0.47	12
SS304P-20	SS316P-20	2"	0.85	21.5	0.51	13

## Union - FPT

304SS	316SS	Size	C	
			in	mm
SS304U-01	SS316U-01	1/8"	1.18	30
SS304U-02	SS316U-02	1/4"	1.32	33.5
SS304U-03	SS316U-03	3/8"	1.44	36.5
SS304U-05	SS316U-05	1/2"	1.56	39.5
SS304U-07	SS316U-07	3/4"	1.67	42.5
SS304U-10	SS316U-10	1"	1.97	50
SS304U-12	SS316U-12	1-1/4"	2.13	54
SS304U-15	SS316U-15	1-1/2"	2.28	58
SS304U-20	SS316U-20	2"	2.56	65



DETAIL

Metal to metal sealing

For more information on installation, adjustment, repair & operation, visit Boshart Knowledge Base at

[SUPPORT.BOSHART.COM](http://SUPPORT.BOSHART.COM)



**BOSHART**  
**INDUSTRIES**

© 2020 Boshart Industries Inc. All Rights Reserved.

25 Whaley Avenue, PO Box 310, Milverton, ON CANADA N0K 1M0  
Tel: 800-561-3164

[boshart.com](http://boshart.com) ♦ [blog.boshart.com](http://blog.boshart.com)