

PWA-PL, PWA-FC, PWA-WDV, & PWA-PT SERIES - PVC WELL POINT & SCREEN ACCESSORIES

These are accessories used with PVC well points and screens for potable water well installations. It is the sole responsibility of the system designer or installer to make sure well point and well screen installations are in compliance with all national and local water well construction codes.

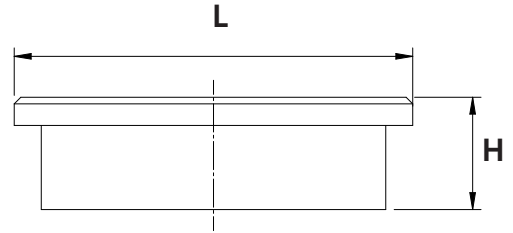
PWA-PL SERIES - FLUSH PLUG

SPECIFICATIONS:

- Designed to fit inside schedule 40 PVC pipe
- Material: PVC



PWA-PL40



DIMENSIONS							
Part No	Size	L		H		Weight	
		in	mm	in	mm	lb	grams
PWA-PL20	2"	2.360	59.94	0.665	16.89		
PWA-PL40	4"	4.500	114.30	1.090	27.69	0.24	108.9

PWA-FC SERIES - FLUSH COUPLING

SPECIFICATIONS:

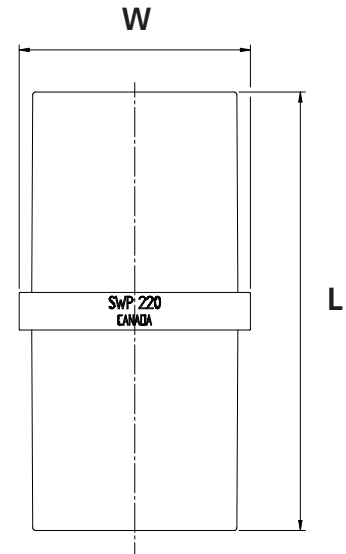
- Used to join two sections of well screen together, designed to fit inside schedule 40 PVC pipe
- Material: PVC

CERTIFICATIONS:

- NSF/ANSI 372 Certified (Drinking Water System Components - Lead Content)



PWA-FC12



DIMENSIONS							
Part No.	Size	L		W		Weight	
		in	mm	in	mm	lb	grams
PWA-FC12	1-1/4"	4.375	111.13	1.620	41.14	0.11	49.9
PWA-FC15	1-1/2"	4.375	111.13	1.850	46.99	0.14	63.5
PWA-FC20	2"	4.375	111.13	2.307	59.60	0.19	86.2



25 Whaley Avenue, PO Box 310, Milverton, ON CANADA N0K 1M0
Tel: 800-561-3164

boshart.com ♦ blog.boshart.com

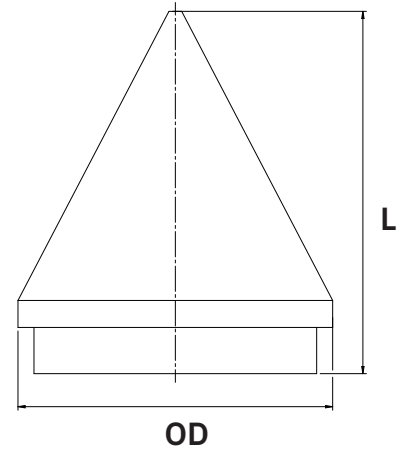
PWA-PT SERIES - WELL POINT

SPECIFICATIONS:

- Designed to fit inside schedule 40 PVC pipe
- Material: PVC



PWA-PT20



DIMENSIONS							
Part No.	Slip Connection Size	L		OD		Weight	
		in	mm	in	mm	lb	grams
PWA-PT12	1-1/4"	3.19	80.03	1.65	41.91	0.16	72.6
PWA-PT20	2"	2.29	58.17	2.37	60.20	0.25	113.4
PWA-PT40	4"	5.15	130.81	4.44	112.78	0.50	226.8

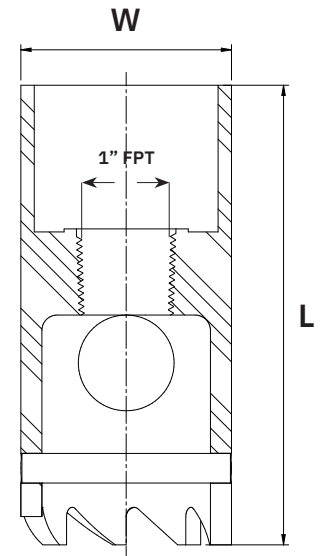
PWA-WDV SERIES - WASHDOWN VALVE

SPECIFICATIONS:

- 2" Slip molded washdown valve
- 1" FPT internal connection for water supply
- Material: PVC
- Can be glued onto a 2" Schedule 40 or 80 PVC pipe
- Jagged edges to loosen soil when washing down well screen. Simply rotate the pipe and washdown valve back and forth.



PWA-WDV20



DIMENSIONS							
Part No.	Size	L		W		Weight	
		in	mm	in	mm	lb	grams
PWA-WDV20	2"	6.000	152.40	2.750	69.85	0.67	303.9

For more information on installation, adjustment, repair & operation, visit Boshart Knowledge Base at

SUPPORT.BOSHART.COM



BOSHART

INDUSTRIES

© 2020 Boshart Industries Inc. All Rights Reserved.

25 Whaley Avenue, PO Box 310, Milverton, ON CANADA N0K 1M0
Tel: 800-561-3164

boshart.com ♦ blog.boshart.com

BII-PWA-WDV, PWA-PT-1024(8)