

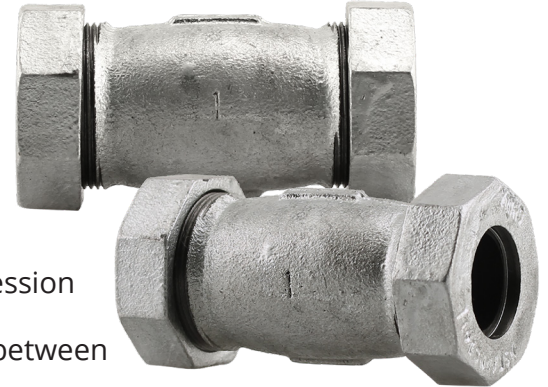
# GCC SERIES - GALVANIZED COMPRESSION COUPLING

## APPLICATIONS:

- Typically used in cold water applications
- Not suitable for steam service, natural gas or liquid propane
- Not suitable for petroleum products

## FEATURES:

- Galvanized finish for additional corrosion resistance
- Retainer cup holds the gasket in place and concentrates compression where it is needed the most
- Protected gasket extends life and provides electrical continuity between the pipe and the coupling



## SPECIFICATIONS:

- Materials conform to ANSI/ASTM A197
- Works on any rigid pipe with IPS (Iron Pipe Size) outside diameter (i.e. Schedule 40, 80, 160 in Carbon Steel [Black/Galvanized], PVC, Red Brass)

## CERTIFICATION:

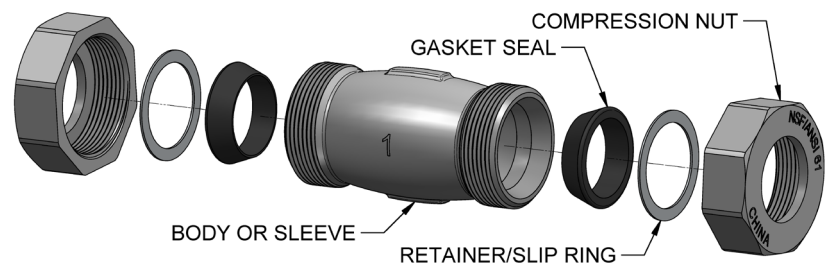
- NSF/ANSI Standard 372 Certified (Drinking Water System Components - Lead Content)

## RATINGS:

- Maximum pressure rating: 150 PSI
- Maximum temperature rating: 140 °F (60 °C)

MATERIAL LIST	
Element	Percent of Composition
<b>Cupola Malleable Iron (ASTM A197)</b>	
Iron (Fe)	≥ 94.0
Carbon (C)	2.9-3.1
Silicone (Si)	1.35-1.6
Manganese (Mn)	0.4-0.6
Phosphorous (P)	<0.1
Sulfur (S)	<0.2
<b>Galvanized Zinc Coating (ASTM A153)</b>	
Zinc (Zn)	≥ 98.0
Iron (Fe)	≤ 0.4
Lead (Pb)	≤ 0.03

COMPONANT MATERIAL LIST	
Part Name	Material
Gasket Seal	Nitrile Butadiene Rubber (NBR)
Retainer/ Slip Ring	Galvanized Carbon Steel
Body (or Sleeve) and Compression Nut	Galvanized Malleable Iron

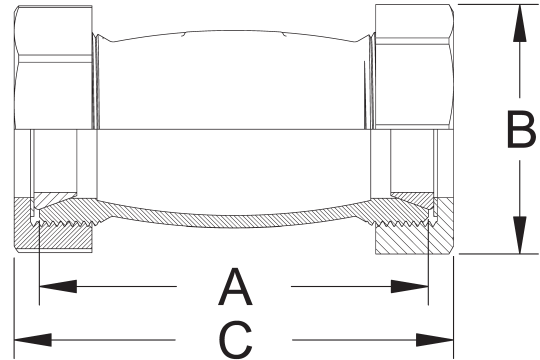


25 Whaley Avenue, PO Box 310, Milverton, ON CANADA N0K 1M0  
Tel: 800-561-3164

[boshart.com](http://boshart.com) ♦ [blog.boshart.com](http://blog.boshart.com)



GCC-10



DIMENSIONS										
Part No.	Size	Pipe O.D.	A		B		C		Weight	
	IPS	in	in	mm	in	mm	in	mm	lb	kg
GCC-05	1/2"	0.840	3.350	85.09	1.850	46.99	3.850	97.79	0.829	0.376
GCC-07	3/4"	1.050	3.690	93.73	2.110	53.59	4.180	106.17	1.206	0.547
GCC-10	1"	1.315	3.950	100.33	2.530	64.26	4.350	110.49	1.680	0.762
GCC-12	1-1/4"	1.660	4.125	104.78	2.680	68.07	4.620	117.35	1.850	0.839
GCC-15	1-1/2"	1.900	4.375	111.13	3.080	78.23	4.840	122.94	2.579	1.170
GCC-20	2"	2.375	4.560	115.82	3.820	97.03	5.130	130.30	4.138	1.877