

28-BFVRSS SERIES - STAINLESS STEEL FLOAT RODS (THREADED)

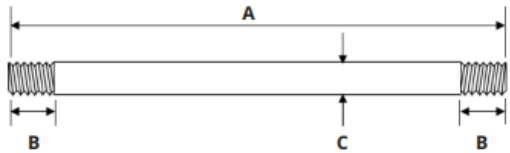
APPLICATIONS:

- Float Rods are used for connecting the float to the float valve
- Commonly used in commercial ice-making equipment, irrigation, water treatment, agriculture, and industrial applications

SPECIFICATIONS:

- Threads conform to ANSI B1.1
- Material 303 Stainless Steel

MATERIAL 303 Stainless Steel	
Element	% of Composition (min/max)
Cr	17.0-19.0
Fe	Rem
Mn	2
Ni	8.0-10.0



DIMENSIONS											
Part No.	Length	Fits Valve	Thread Size	A		B		C		Weight	
				in	mm	in	mm	in	mm	lbs	grams
28-BFVRSS-045	4.5"	Use to connect 3/8" through 1" float valves with float balls up to and including 6" diameter	1/4" - 20 SAE	4.50	114.30	0.56	14.29	0.25	6.35	0.064	29
28-BFVRSS-06	6"		1/4" - 20 SAE	6.00	152.40	0.56	14.29	0.25	6.35	0.088	40
28-BFVRSS-08	8"		1/4" - 20 SAE	8.01	203.20	0.56	14.29	0.25	6.35	0.110	50
28-BFVRSS-10	10"		1/4" - 20 SAE	10.01	254.00	0.56	14.29	0.25	6.35	0.121	55
28-BFVRSS-12	12"		1/4" - 20 SAE	12.01	304.80	0.56	14.29	0.25	6.35	0.187	85
28-BFVRSS3814-10	10"	Use to connect 3/8" through 1" float valves with 8" or larger float balls; or 1-1/4" through 2" float valves with 6" or smaller float balls.	1/4" - 20 SAE	10.01	254.00	0.56	14.29	0.37	9.50	0.313	142
28-BFVRSS3814-12	12"		1/4" - 20 SAE	12.01	304.80	0.56	14.29	0.37	9.50	0.377	171
28-BFVRSS3814-14	14"		1/4" - 20 SAE	14.01	355.60	0.56	14.29	0.37	9.50	0.441	200
28-BFVRSS3814-16	16"		1/4" - 20 SAE	16.01	406.40	0.56	14.29	0.37	9.50	0.507	230
28-BFVRSS38-10	10"	Use to connect 1-1/4" through 2" float valves with 8" and larger float balls.	1/4" - 20 SAE	10.01	254.00	0.56	14.29	0.37	9.50	0.322	146
28-BFVRSS38-12	12"		1/4" - 20 SAE	12.01	304.80	0.56	14.29	0.37	9.50	0.397	180
28-BFVRSS38-14	14"		1/4" - 20 SAE	14.01	355.60	0.56	14.29	0.37	9.50	0.448	203
28-BFVRSS38-16	16"		1/4" - 20 SAE	16.01	406.40	0.56	14.29	0.37	9.50	0.511	232

For more information on installation, adjustment, repair & operation, visit Boshart Knowledge Base at

SUPPORT.BOSHART.COM



BOSHART
INDUSTRIES

25 Whaley Avenue, PO Box 310, Milverton, ON CANADA N0K 1M0
Tel: 800-561-3164

boshart.com ♦ blog.boshart.com