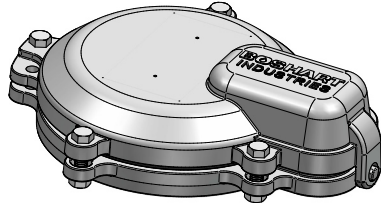
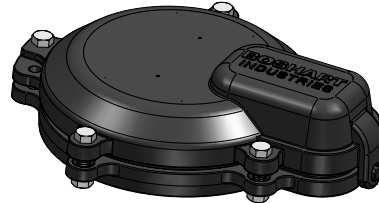


INSTALLATION INSTRUCTIONS FOR WTCC SERIES TWO PIECE LOCKING WELL CAPS FOR STEEL & PVC CASING



WTCC-Axxx
Aluminum Series



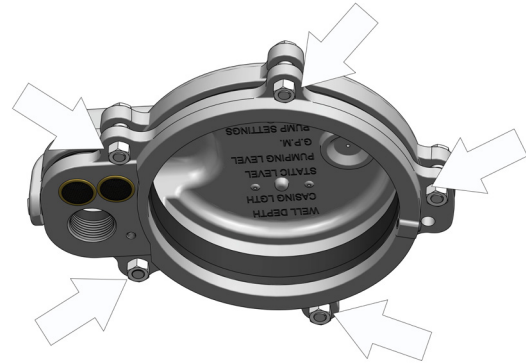
WTCC-Cxxx
Cast Iron Series

STEP #1

Make sure the well casing is cut off with a clean level cut and free of burrs and foreign debris.

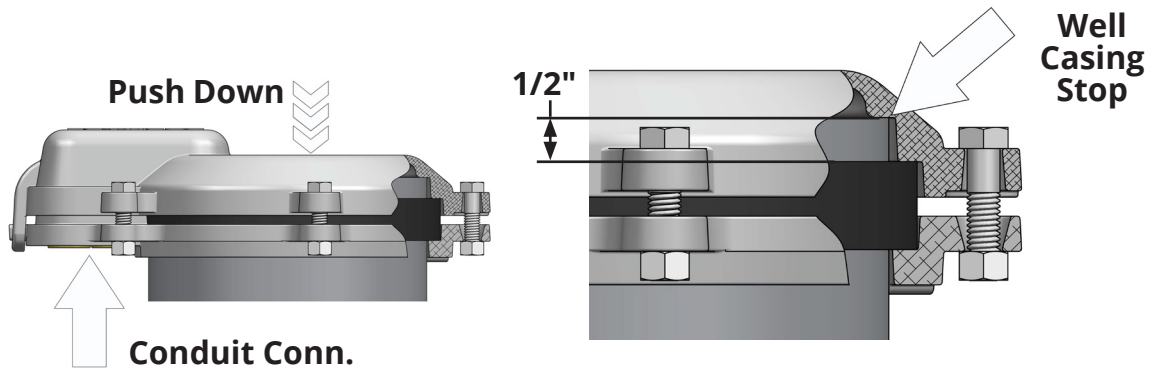
STEP #2

Loosen the 5 nuts & bolts until there is no compression on the rubber gasket, keep them finger snug so castings are in contact with the gasket.



STEP #3

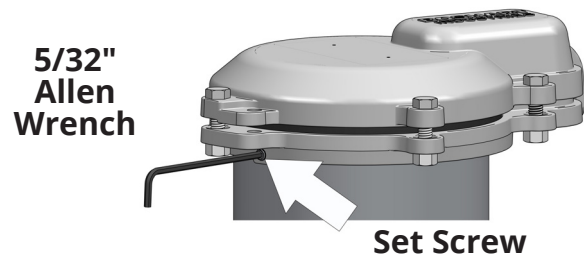
Place cap onto well casing making sure that the conduit connection is pointing in the desired direction. Then push straight down on the well cap until the well cap bottoms out on the well casing contacting the "stop" inside the cap cover. the casing will protrude 1/2" through the gasket.



STEP #4

Tighten the set screw at the rear of the bottom ring using a 5/32" allen wrench.

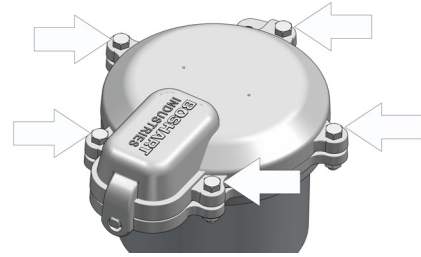
Note: Having the well cap assembled ensures the lower ring is secured in the proper position for reassembly after pump installation.



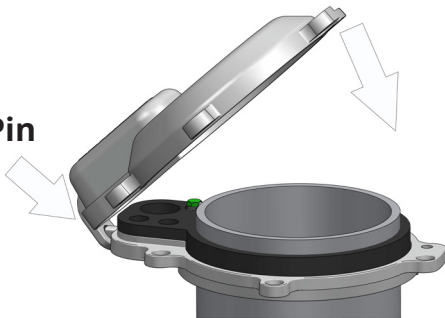
INSTALLATION INSTRUCTIONS FOR WTCC SERIES TWO PIECE LOCKING WELL CAPS FOR STEEL & PVC CASING

STEP #5

Remove the 5 nuts & bolts securing the top cover to the lower ring. Then remove cover by tilting cover upward at the rear of the cap and sliding it forward to release the top cover from the locking Pin (See STEP 6) You will see the casing protruding thru the gasket approx. 1/2". You are ready to install the pump.



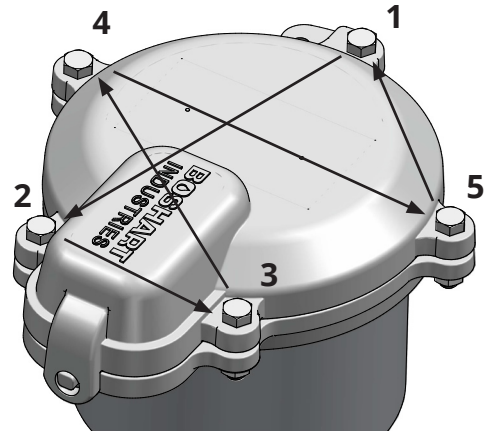
Front
Locking Pin



STEP #6

Replace top cover by hooking it over the locking tab at the front of the conduit connection of the well cap. Then lower the rear of the cap, until it is completely down over the sealing gasket with the bolt holes in alignment.

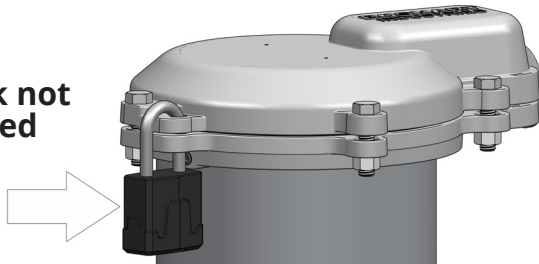
Bolt Tightening Sequence



STEP #7

Replace the 5 sets of 3/8" nuts and bolts and finger tighten. Then tighten bolts in small 1/4 turn increments in the sequence as illustrated, ensuring that the castings touch evenly between the bolts all the way around. DO NOT over tighten. You will be able to feel when the two metal halves touch.

Pad Lock not
Included



STEP #8

OPTIONAL - Place padlock through the locking tabs directly in front of set screw.

BOSHART
INDUSTRIES

25 Whaley Avenue, PO Box 310, Milverton, ON CANADA N0K 1M0
Tel: 800-561-3164

boshart.com ♦ blog.boshart.com