

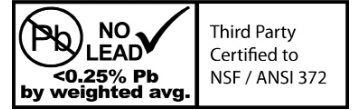
# P-SS SERIES STAINLESS STEEL PITLESS ADAPTER

## SPECIFICATION:

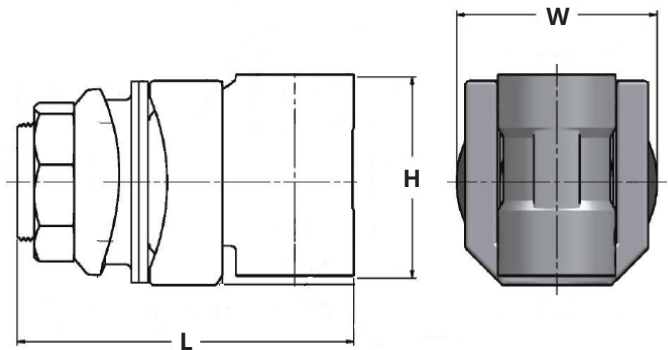
- Threads conform to ANSI/ASME B1.20.1
- Heavy duty stainless steel castings
- Fits 5" to 12" I.D. casing sizes
- Large gaskets ensure positive seal to well casing
- Chamfered slide for easy installation

## CERTIFICATION:

- NSF/ANSI Standard 372 Certified
- \* Water Systems Council listed PAS-97 (2017)



MATERIAL LIST	
Part	Materials
Elbow	304 Stainless Steel
Slide	304 Stainless Steel
O-ring	NBR Rubber
Gaskets	NBR Rubber
Washer	304 Stainless Steel
Nut	304 Stainless Steel



DIMENSIONS												
Part No.	Drop Pipe Size	Casing Size I.D.	Hole Saw Size	Replacement O-ring	Working Load	H		L		W		Weight
	Inches	Inches	Inches	Standard	lbs	inches	mm	inches	mm	inches	mm	grams
P-800-SS	1	5 - 12	1-3/4	AS568-324	6000	2.75	69.95	4.48	113.87	2.60	65.99	1218
P-100-SS *	1	5 - 12	1-3/4	AS568-324	6000	2.77	70.36	4.64	117.73	2.76	70.10	1415
P-125-SS *	1-1/4	5 - 12	2-1/8	AS568-326	6000	3.15	79.88	5.02	127.41	3.15	79.88	2263
P-150-SS *	1-1/2	5 - 12	2-1/2	AS568-329	6000	4.09	103.89	5.74	145.85	3.71	94.23	4337
P-200-SS *	2	5 - 12	3-1/8	AS568-332	6000	4.75	120.65	6.50	165.05	4.50	114.30	6013



25 Whaley Avenue, PO Box 310, Milverton, ON CANADA N0K 1M0  
Tel: 800-561-3164

[boshart.com](http://boshart.com) ♦ [blog.boshart.com](http://blog.boshart.com)