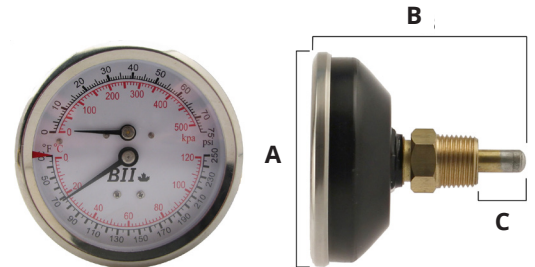


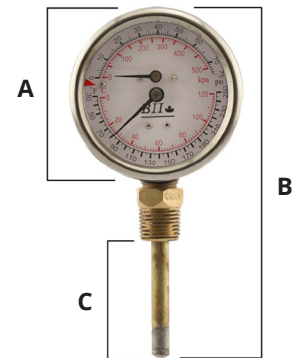
2-1/2" & 3" DIAL TRIDICATOR

APPLICATION:

- General purpose industrial combination pressure gauge / thermometer
- 3" dial face comes with adjustable indicator



TRIDICATOR SPECIFICATIONS	
Standard	ASME B40.1
Dial	2-1/2" (63mm) or 3" (76mm) white aluminum dial
Case	Red(2-1/2") or Black (3") Steel
Lens	Acrylic
Connection	Brass
Bourdon Tube	Brass
Element	Coiled Bi-Metal / Brass
Pointer	Aluminum (Anodized Black)
Welding	Tin Solder
Working Pressure	Thermowell Max. Press. Rating: 87 PSI (600 kPa)



DIMENSIONS									
Part No.	Connection	Dual Range		Pressure Range		A	B	C	Weight grams
		°F	°C	PSI	kPa				
2-1/2" Dial Red Steel Case									
TR25-CB1-60/250	1/4" CBM	30-250	0-120	0-75	0-500	2-11/16"	3-9/16"	1-9/16"	180
TR25X1-CB1-60/250	1/4" CBM	30-250	0-120	0-75	0-500	2-11/16"	4-7/8"	1-5/8"	240
3" Dial Black Steel Case									
TR30-CB2S-60/250	1/2" CBM	30-250	0-120	0-75	0-500	3-5/16"	3-3/16"	11/16"	300
TR30-CB2-60/250	1/2" CBM	30-250	0-120	0-75	0-500	3-5/16"	4-7/8"	2-1/4"	300
TR30-LM2-60/250	1/2" LM	30-250	0-120	0-75	0-500	3-5/16"	6-3/4"	2-1/4"	300
TR30-LM2-80/290	1/2" LM	80-290	26-143	0-200	0-1400	3-5/16"	6-3/4"	2-1/4"	300



25 Whaley Avenue, PO Box 310, Milverton, ON CANADA N0K 1M0
Tel: 800-561-3164

boshart.com ♦ blog.boshart.com