

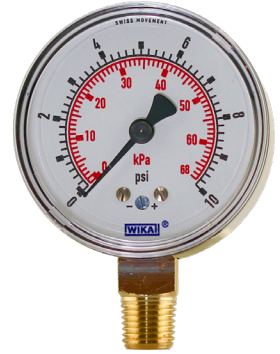
2-1/2" DIAL LOW PRESSURE GAUGE LOWER MOUNT

APPLICATION:

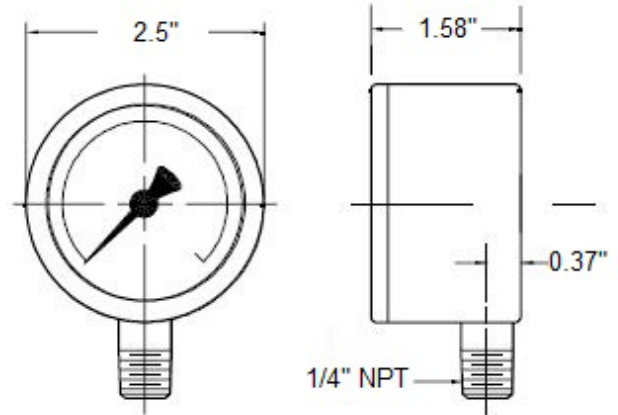
General purpose gauge, for potable water pumps & systems, these gauges are suitable for compressors, hydraulic presses, machinery, pneumatic equipment and motors, for most commercial air, water and steam services. To be used with fluid medium which does not clog connection or corrode copper alloy.

Not for use with oxygen, natural gas or propane.

Ideal for use in low pressure pneumatic systems for accurate measurement shown in inches of water.



GAUGE SPECIFICATIONS	
Standard	ASME B40.1
Dial	2-1/2" (63.5mm) white aluminum dial
Case	Steel
Lens	Acrylic
Ring (Bezel)	N/A
Connection	Brass
Bourdon Tube	Brass
Fill Liquid	N/A
Movement	Brass
Pointer	Aluminum (Anodized Black)
Welding	Tin Solder
Working Pressure	Full Scale Value (F.S.V.)
Ambient Op. Temp.	-4°F to 140°F (-20°C to 60°C)
Media Op. Temp.	Max. 140°F (60°C)
Accuracy	+/- 1.5% Full Scale Value (F.S.V.)
Enclosure Rating	General Purpose



DIMENSIONS				
Part No.	Connection	Range	Increments	Weight
		PSI		grams
PG25-0-15IN	1/4" MPT	0-15 IN H ₂ O	0.2	180
PG25-0-30IN	1/4" MPT	0-30 IN H ₂ O	0.5	180
PG25-0-60IN	1/4" MPT	0-60 IN H ₂ O	1	180
PG25-0-100IN	1/4" MPT	0-100 IN H ₂ O	2	180
PG25-0-200IN	1/4" MPT	0-160 IN H ₂ O	5	180
PG25-0-5PSI	1/4" MPT	0-5 PSI	0.1	180
PG25-0-10PSI	1/4" MPT	0-10 PSI	0.2	180

NOTE: Additional error when temperature changes from reference temperature of 68°F (20°C) +0.4% for every 18°F (10°C) rising or falling.

BOSHART
INDUSTRIES

25 Whaley Avenue, PO Box 310, Milverton, ON CANADA N0K 1M0
Tel: 800-561-3164

boshart.com ♦ blog.boshart.com