

PG-GT & PG-GTMC SERIES GAS TEST GAUGE & MANIFOLDS

APPLICATION:

- Provides a quick and easy means of pressurizing and monitoring gas systems for leakage
- Gauges assembled on brass hex manifold incorporating an air valve
- Available with manifold and air valve only
- Gas test manifold coupling is a trouble free alternative to test gas systems
- Coupling drilled and tapped 1/8"
- Coupling available assembled complete with pressure gauge and air valve or coupling only

SPECIFICATIONS:

GAUGE SPECIFICATIONS	
Standard	ASME B40.1
Dial	2" (51mm) white aluminum dial
Case	Steel (ASTM a1008 CS)
Lens	Acrylic
Ring (Bezel)	N/A
Connection	Brass (ASTM C37800)
Bourdon Tube	Brass (ASTM C51100)
Fill Liquid	N/A
Pointer	Aluminum (anodized black)
Welding	Tin solder
Working Pressure	Maximum 75% of full scale value (FSV)
Ambient Operating Temperature	-40 °F to 140 °F (-40 °C to 60 °C)
Media Operating Temperature	Maximum 140 °F (60 °C)
Accuracy	3% - 2% - 3% Grade B
Enclosure Rating	General purpose







BOSHART
INDUSTRIES

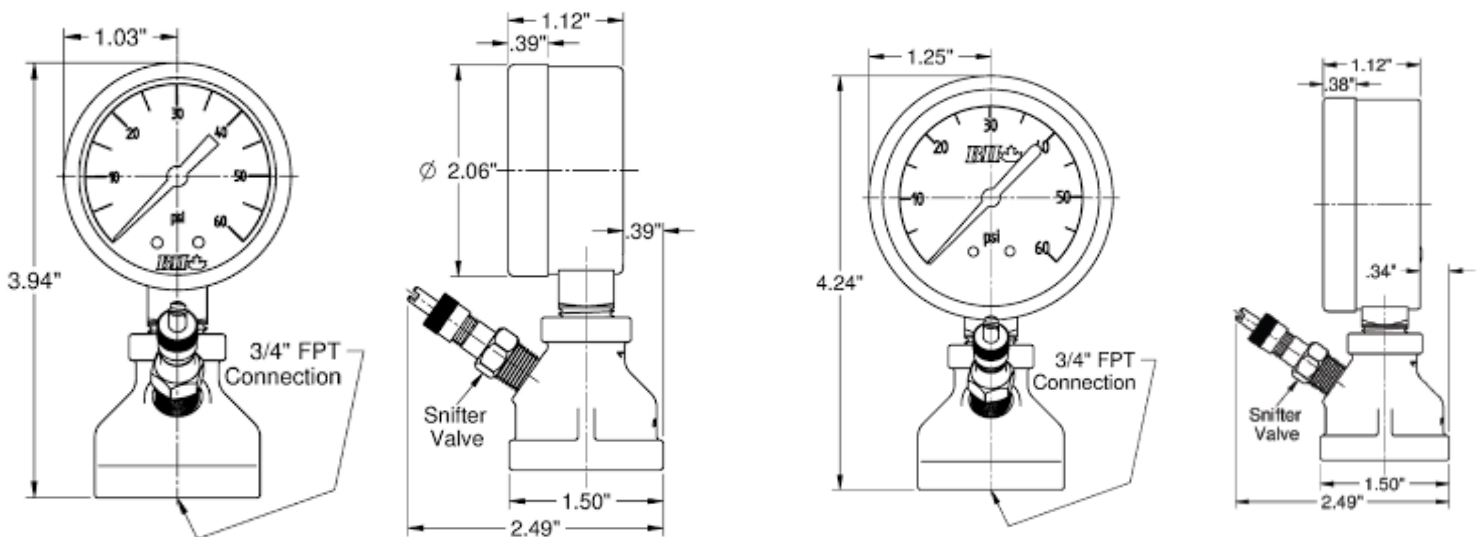
25 Whaley Avenue, PO Box 310, Milverton, ON CANADA N0K 1M0
Tel: 800-561-3164

boshart.com ♦ blog.boshart.com

MALLEABLE IRON GAS TEST MANIFOLD PACKAGES:

This package includes a Class 150 black malleable iron manifold with a built in snifter valve and a 2" or 2-1/2" gas test gauge. A malleable iron manifold with or without a snifter valve is also available to purchase separately which does not include a gas test gauge.

DIMENSIONS							
Part No.	System Connection	Air Valve Connection	Gauge Port Connection	Range (PSI)	Increments	Weight (g)	
	Gas Test Manifold Package with 2" Gauge						
	PG-GTMC-15	3/4" FPT	1/8" FPT	1/4" FPT	0-15	0.2	200
	PG-GTMC-30	3/4" FPT	1/8" FPT	1/4" FPT	0-30	0.5	200
	PG-GTMC-60	3/4" FPT	1/8" FPT	1/4" FPT	0-60	1	200
	Gas Test Manifold Package with 2-1/2" Gauge						
	PG-GTMC25-15	3/4" FPT	1/8" FPT	1/4" FPT	0-15	0.2	200
	PG-GTMC25-30	3/4" FPT	1/8" FPT	1/4" FPT	0-30	0.5	200
	PG-GTMC25-60	3/4" FPT	1/8" FPT	1/4" FPT	0-60	1	200
	Gas Test Manifold with Snifter Valve						
	PG-GTMC-SV	3/4" FPT	1/8" FPT	1/4" FPT	-	-	100
	Gas Test Manifold without Snifter Valve						
	PG-GTMC	3/4" FPT	1/8" FPT	1/4" FPT	-	-	91



BOSHART
INDUSTRIES

25 Whaley Avenue, PO Box 310, Milverton, ON CANADA N0K 1M0
Tel: 800-561-3164

boshart.com ♦ blog.boshart.com

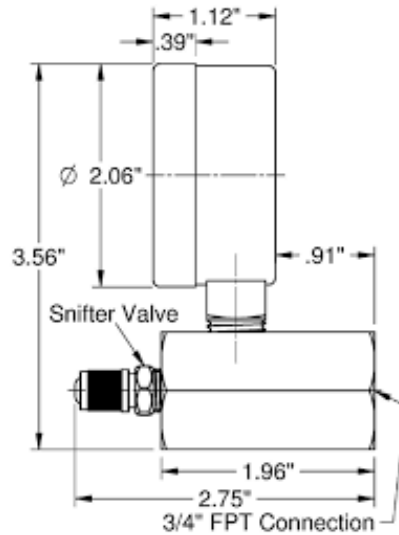
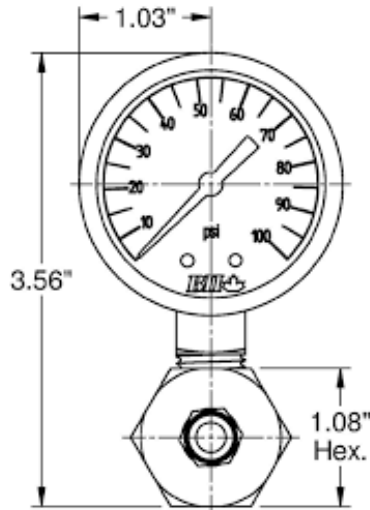
© 2020 Boshart Industries Inc. All Rights Reserved.

BII-PG-GT-0723(1090)
BII-PG-GTMC-0723(1090)

CHROME PLATED GAS TEST MANIFOLD PACKAGES:

This package includes a chrome plated steel (ASTM A36) manifold with a built in snifter valve and a 2" gas test gauge. A chrome plated manifold with a snifter valve is also available to purchase separately which does not include a gas test gauge.

		DIMENSIONS					
Part No.	System Connection	Air Valve Connection	Gauge Port Connection	Range (PSI)	Increments	Weight (g)	
Gas Test Manifold Package with 2" Gauge							
PG-GT15	3/4" FPT	1/8" FPT	1/4" FPT	0-15	0.2	200	
PG-GT30	3/4" FPT	1/8" FPT	1/4" FPT	0-30	0.5	200	
PG-GT100	3/4" FPT	1/8" FPT	1/4" FPT	0-100	1	200	
PG-GT200	3/4" FPT	1/8" FPT	1/4" FPT	0-200	2	200	
Gas Test Manifold with Snifter Valve							
PG-GTM	3/4" FPT	1/8" FPT	1/4" FPT	-	-	168	



For more information on installation, adjustment, repair & operation, visit Boshart Knowledge Base at

SUPPORT.BOSHART.COM



BOSHART
INDUSTRIES

25 Whaley Avenue, PO Box 310, Milverton, ON CANADA N0K 1M0
Tel: 800-561-3164

boshart.com ♦ blog.boshart.com