

# 710P SERIES POLY-ALLOY CRIMP PEX FITTINGS

Crimp PEX fittings are resistant to chemicals in corrosive and aggressive water conditions. They are designed for use in ASTM F2159 PEX cold and hot water distribution systems using SDR9 PEX tubing. There are integral locating tabs to ensure tubing and fitting are installed properly which eliminates faulty crimp connections.

## SPECIFICATIONS:

- For use with ASTM F2769, ASTM F2623, (PE-RT) SDR9 pipe
- For use with ASTM F876 or F3253 PEX pipe
- Crimp PEX end conform to ASTM F2159, F877 and CSA B137.5
- Threads conform to ASME B1.20.1
- Maximum Pressure Rating: 100 PSI
- Temperature Range: Up to 180°F (82°C)
- Made of polyalloy plastic (PPSU)
- Compatible with: PEX-A, PEX-B, and PEX-C
- With a lip on the fitting allows perfect ring positioning
- Resistant to chlorine stress crack corrosion



## CERTIFICATION:

- NSF/ANSI 14 & 372 Certified
- Material complies with NSF/ANSI Standard 61



**BOSHART**  
INDUSTRIES

25 Whaley Avenue, PO Box 310, Milverton, ON CANADA N0K 1M0  
Tel: 800-561-3164

[boshart.com](http://boshart.com) ♦ [blog.boshart.com](http://blog.boshart.com)

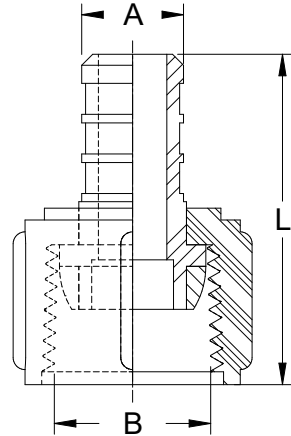
© 2020 Boshart Industries Inc. All Rights Reserved.

BII-710P-0922(36)

# POLY-ALLOY CRIMP PEX FITTINGS

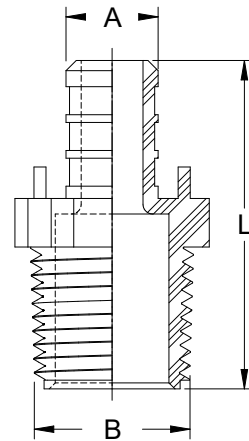
## Adapter - Crimp PEX x FPT

Swivel on FPT connection



Part No.	Nominal Pipe Size		L	
	A	B	inches	mm
710P-FA05S	1/2"	1/2"	1.630	41.40
710P-FA07S	3/4"	3/4"	1.650	41.91

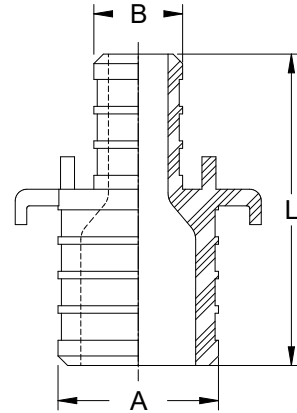
## Adapter - Crimp PEX x MPT



Part No.	Nominal Pipe Size		L	
	A	B	inches	mm
710P-MA05	1/2"	1/2"	1.690	42.93
710P-MA0507	1/2"	3/4"	1.640	41.66
710P-MA07	3/4"	3/4"	1.640	41.66
710P-MA0705	3/4"	1/2"	1.640	41.66
710P-MA10	1"	1"	1.837	46.66

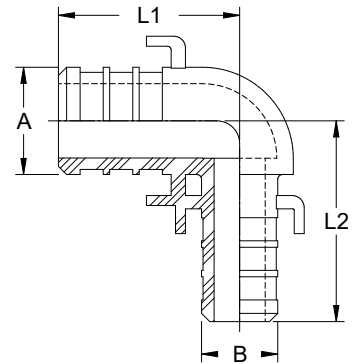
# POLY-ALLOY CRIMP PEX FITTINGS

## Coupling - Crimp PEX



Part No.	Nominal Pipe Size		L	
	A	B	inches	mm
710P-C05	1/2"	1/2"	1.490	37.85
710P-C07	3/4"	3/4"	1.490	37.85
710P-C0705	3/4"	1/2"	1.512	38.40
710P-C10	1"	1"	1.790	45.47
710P-C1005	1"	1/2"	1.662	42.21
710P-C1007	1"	3/4"	1.662	42.21

## 90° Elbow - Crimp PEX



Part No.	Nominal Pipe Size		L1		L2	
	A	B	inches	mm	inches	mm
710P-E05	1/2"	1/2"	1.137	28.88	1.137	28.88
710P-E07	3/4"	3/4"	1.262	32.05	1.262	32.05
710P-E0705	3/4"	1/2"	1.127	28.63	1.252	31.80
710P-E10	1"	1"	1.542	39.17	1.542	39.17

**BOSHART**  
INDUSTRIES

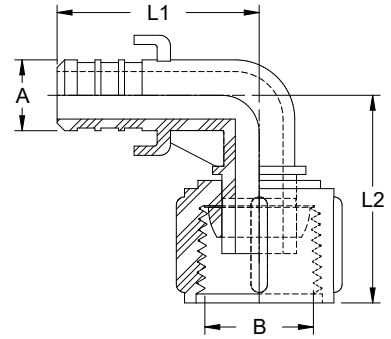
25 Whaley Avenue, PO Box 310, Milverton, ON CANADA N0K 1M0  
Tel: 800-561-3164

[boshart.com](http://boshart.com) ♦ [blog.boshart.com](http://blog.boshart.com)

# POLY-ALLOY CRIMP PEX FITTINGS

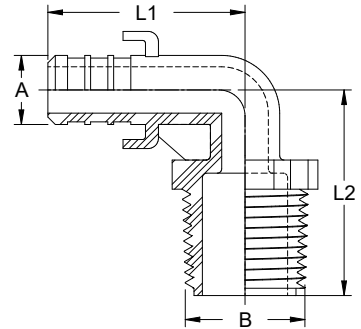
## 90° Elbow - Crimp PEX x FPT

Swivel on FPT connection



Part No.	Nominal Pipe Size		L1		L2	
	A	B	inches	mm	inches	mm
710P-FE05S	1/2"	1/2"	1.353	34.37	1.452	36.88

## 90° Elbow - Crimp PEX x MPT

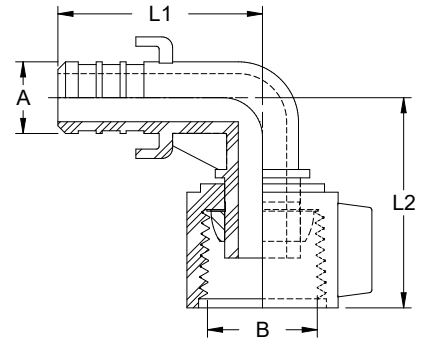


Part No.	Nominal Pipe Size		L1		L2	
	A	B	inches	mm	inches	mm
710P-ME05	1/2"	1/2"	1.353	34.37	1.411	35.84
710P-ME07	3/4"	3/4"	1.427	36.25	1.536	39.01
710P-ME0705	3/4"	1/2"	1.427	36.25	1.536	39.01

# POLY-ALLOY CRIMP PEX FITTINGS

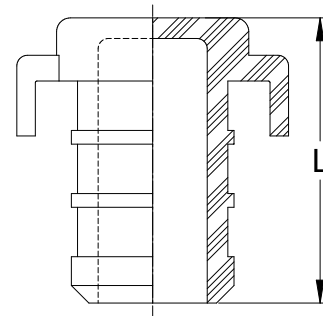
## Wingnut Elbow -Crimp PEX x FPT

Swivel on FPT connection



Part No.	Nominal Pipe Size		L1		L2	
	A	B	inches	mm	inches	mm
710P-FE05SW	1/2"	1/2"	1.353	34.37	1.402	35.61

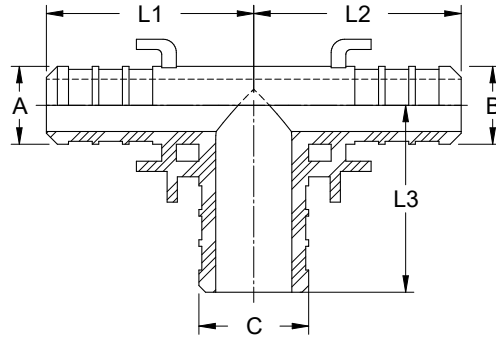
## Plug -Crimp PEX



Part No.	Nominal Pipe Size	L	
		inches	mm
710P-P05	1/2"	0.831	21.11
710P-P07	3/4"	0.831	21.11
710P-P10	1"	0.981	24.92

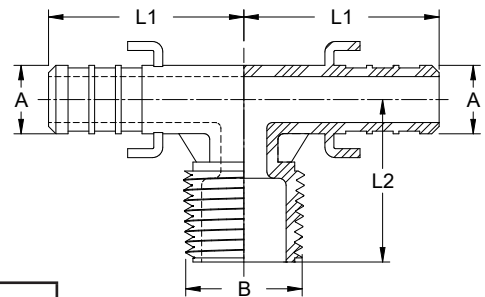
# POLY-ALLOY CRIMP PEX FITTINGS

## Tee -Crimp PEX



Part No.	Nominal Pipe Size			L1		L2		L3	
	A	B	C	inches	mm	inches	mm	inches	mm
710P-T05	1/2"	1/2"	1/2"	1.137	28.88	1.137	28.88	1.137	28.88
710P-T050507	1/2"	1/2"	3/4"	1.262	32.05	1.262	32.05	1.137	28.88
710P-T07	3/4"	3/4"	3/4"	1.262	32.05	1.262	32.05	1.262	32.05
710P-T070505	3/4"	1/2"	1/2"	1.137	28.88	1.143	29.03	1.262	32.05
710P-T070507	3/4"	1/2"	3/4"	1.262	32.05	1.262	32.05	1.262	32.05
710P-T070705	3/4"	3/4"	1/2"	1.137	28.88	1.137	28.88	1.262	32.05
710P-T070710	3/4"	3/4"	1"	1.392	35.36	1.392	35.36	1.412	35.86
710P-T10	1"	1"	1"	1.542	39.17	1.542	39.17	1.542	39.17
710P-T100707	1"	3/4"	3/4"	1.410	35.81	1.265	32.13	1.387	35.23
710P-T100710	1"	3/4"	1"	1.540	39.12	1.430	36.32	1.542	39.17
710PT-101005	1"	1"	1/2"	1.287	32.69	1.287	32.69	1.392	35.36
710P-T101007	1"	1"	3/4"	1.413	35.88	1.413	35.88	1.392	35.36

## Tee - Crimp PEX x MPT



Part No.	Nominal Pipe Size		L1		L2	
	A	B	inches	mm	inches	mm
710P-MT05	1/2"	1/2"	1.3525	34.35	1.125	28.58

**BOSHART**  
INDUSTRIES

25 Whaley Avenue, PO Box 310, Milverton, ON CANADA N0K 1M0  
Tel: 800-561-3164

[boshart.com](http://boshart.com) ♦ [blog.boshart.com](http://blog.boshart.com)