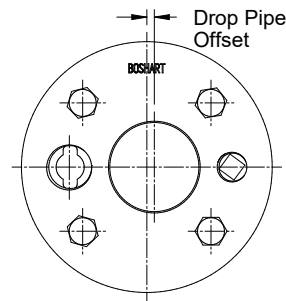
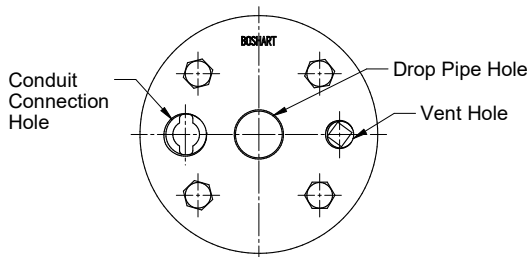


WSP SERIES PLASTIC WELL SEALS

SPECIFICATION:

- ABS top and bottom plates
- Zinc plated bolts and flanged nuts (Stainless steel hardwares are available)
- A split seal option is available by adding -S to the end of the part number
- Grommet kit is included (See page 4 for accessories)
- Offset drop pipe allows for large conduit connection



Blank and single hole Well Seals

Supplied with a plug for the conduit connection

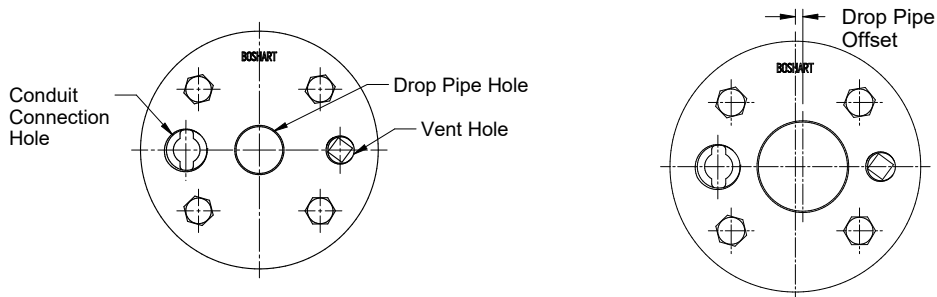
Series	Well Casing I.D.	Drop Pipe Size	Drop Pipe Offset (in)	Top Plate Thickness (in)	Bottom Plate Thickness (in)	Conduit Connection (FPT)	Vent Size (FPT)
4" WSP Series							
WSP40	4"	Blank	N/A	1/2" (.500)	0.600	3/4"	1/2"
WSP4010	4"	1"	0.500	1/2" (.500)	0.600	3/4"	1/2"
WSP4012	4"	1-1/4"	0.500	1/2" (.500)	0.600	3/4"	1/2"
WSP4015	4"	1-1/2"	0.500	1/2" (.500)	0.600	3/4"	1/2"
WSP4020*	4"	2"	0.500	1/2" (.500)	0.600	3/4"	1/2"
*WSP4020 has raised supports, making it possible to incorporate a 3/4" cable hole							
4-1/4" WSP Series							
WSP42	4-1/4"	Blank	N/A	1/2" (.500)	0.600	3/4"	1/2"
WSP4210	4-1/4"	1"	0.500	1/2" (.500)	0.600	3/4"	1/2"
WSP4212	4-1/4"	1-1/4"	0.500	1/2" (.500)	0.600	3/4"	1/2"
WSP4215	4-1/4"	1-1/2"	0.500	1/2" (.500)	0.600	3/4"	1/2"
WSP4220	4-1/4"	2"	0.500	1/2" (.500)	0.600	3/4"	1/2"
5" WSP Series							
WSP50	5"	Blank	N/A	1/2" (.500)	0.600	1"	1/2"
WSP5010	5"	1"	0.900	1/2" (.500)	0.600	1"	1/2"
WSP5012	5"	1-1/4"	0.900	1/2" (.500)	0.600	1"	1/2"
WSP5015	5"	1-1/2"	0.900	1/2" (.500)	0.600	1"	1/2"
WSP5020	5"	2"	0.900	1/2" (.500)	0.600	1"	1/2"



25 Whaley Avenue, PO Box 310, Milverton, ON CANADA N0K 1M0
Tel: 800-561-3164

boshart.com ♦ blog.boshart.com

WSP SERIES PLASTIC WELL SEALS



Series	Well Casing I.D.	Drop Pipe Size	Drop Pipe Offset (in)	Top Plate Thickness (in)	Bottom Plate Thickness (in)	Conduit Connection (FPT)	Vent Size (FPT)
5-1/4" WSP Series							
WSP52	5-1/4"	Blank	N/A	1/2" (.500)	0.600	1"	1/2"
WSP5210	5-1/4"	1"	0.900	1/2" (.500)	0.600	1"	1/2"
6" WSP Series							
WSP60	6"	Blank	N/A	1/2" (.500)	0.600	1"	1/2"
WSP6010	6"	1"	Centered	1/2" (.500)	0.600	1"	1/2"
WSP6012	6"	1-1/4"	Centered	1/2" (.500)	0.600	1"	1/2"
WSP6015	6"	1-1/2"	0.350	1/2" (.500)	0.600	1"	1/2"
WSP6020	6"	2"	0.350	1/2" (.500)	0.600	1"	1/2"
6-1/4" WSP Series							
WSP62	6-1/4"	Blank	N/A	1/2" (.500)	0.600	1"	1/2"
WSP6210	6-1/4"	1"	Centered	1/2" (.500)	0.600	1"	1/2"
WSP6212	6-1/4"	1-1/4"	Centered	1/2" (.500)	0.600	1"	1/2"
WSP6215	6-1/4"	1-1/2"	0.350	1/2" (.500)	0.600	1"	1/2"
WSP6220	6-1/4"	2"	0.350	1/2" (.500)	0.600	1"	1/2"

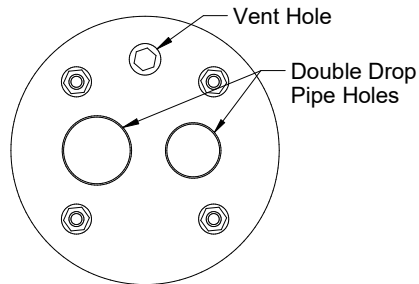


25 Whaley Avenue, PO Box 310, Milverton, ON CANADA N0K 1M0
Tel: 800-561-3164

boshart.com ♦ blog.boshart.com

WSP SERIES PLASTIC WELL SEALS

Double Holes Well Seals



Series	Well Casing I.D.	Drop Pipe Size	Top Plate Thickness (in)	Bottom Plate Thickness (in)	Conduit Connection (FPT)	Vent Size (FPT)
WSP401210	4"	1-1/4" x 1"	1/2" (.500)	0.600	N/A	1/2"
WSP421210	4-1/4"	1-1/4" x 1"	1/2" (.500)	0.600	N/A	1/2"
WSP501210	5"	1-1/4" x 1"	1/2" (.500)	0.600	N/A	1/2"
WSP601210	6"	1-1/4" x 1"	1/2" (.500)	0.600	N/A	1/2"
WSP601212	6"	1-1/4" x 1-1/4"	1/2" (.500)	0.600	N/A	1/2"
WSP621210	6-1/4"	1-1/4" x 1"	1/2" (.500)	0.600	N/A	1/2"
WSP621212	6-1/4"	1-1/4" x 1-1/4"	1/2" (.500)	0.600	N/A	1/2"



25 Whaley Avenue, PO Box 310, Milverton, ON CANADA N0K 1M0
Tel: 800-561-3164

boshart.com ♦ blog.boshart.com

WELL SEAL ACCESSORIES

Grommet Kit

Includes a bushing, round gasket and slotted gasket

Part No.	Size
WS-GK-07	3/4"
WS-GK-10	1"



Air Vent-PVC

Part No.	Size
WS-V05	1/2"



Air Vent-Zinc Plated Steel

Part No.	Size
WS-V05-G	1/2"



25 Whaley Avenue, PO Box 310, Milverton, ON CANADA N0K 1M0
Tel: 800-561-3164

boshart.com ♦ blog.boshart.com