

CLASS 150 SS304 & SS316 LIGHT STAINLESS STEEL FITTINGS-ISO 4144

MATERIAL SPECIFICATIONS:

- ASTM A351 Austenitic Steel Castings

DIMENSIONAL SPECIFICATIONS:

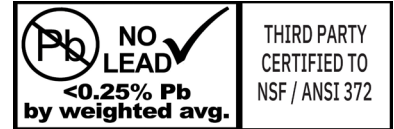
- ISO 4144 Threaded Fittings

THREAD SPECIFICATIONS:

- ANSI/ASME B1.20.1 Pipe Threads

CERTIFICATION:

- NSF/ANSI 372 Certified



MATERIAL LIST		
Name	Percent of Composition	
	304	316
Carbon (C)	0.08 Max	0.08 Max
Manganese (Mn)	1.50 Max	1.50 Max
Silicone (Si)	2.00 Max	1.50 Max
Sulfur (S)	0.040 Max	0.040 Max
Phosphorus (P)	0.040 Max	0.040 Max
Chromium (Cr)	18.0-21.0	18.0-21.0
Nickel (Ni)	8.0-11.0	9.0-12.0
Molybdenum (Mo)	0.50 Max	2.0-3.0



BOSHART
INDUSTRIES

25 Whaley Avenue, PO Box 310, Milverton, ON CANADA N0K 1M0
Tel: 800-561-3164

boshart.com ♦ blog.boshart.com

CLASS 150 LIGHT 304 / 316 STAINLESS FITTINGS - ISO 4144

Bushing - MPT x FPT



* Octagon Head

304SS	316SS	Size	A		D	
			Inches	mm	Inches	mm
SS304B-0201	SS316B-0201	1/4" x 1/8"	0.41	10.5	0.16	4.0
SS304B-0301	SS316B-0301	3/8" x 1/8"	0.43	11.0	0.20	5.0
SS304B-0302	SS316B-0302	3/8" x 1/4"	0.43	11.0	0.20	5.0
SS304B-0501-3	SS316B-0501-3	1/2" x 1/8"	0.57	14.5	0.20	5.0
SS304B-0502	SS316B-0502	1/2" x 1/4"	0.57	14.5	0.20	5.0
SS304B-0503	SS316B-0503	1/2" x 3/8"	0.57	14.5	0.20	5.0
SS304B-0701-3	SS316B-0701-3	3/4" x 1/8"	0.61	15.5	0.22	5.5
SS304B-0702-3	SS316B-0702-3	3/4" x 1/4"	0.61	15.5	0.22	5.5
SS304B-0703	SS316B-0703	3/4" x 3/8"	0.61	15.5	0.22	5.5
SS304B-0705	SS316B-0705	3/4" x 1/2"	0.61	15.5	0.22	5.5
SS304B-1002-3 *	SS316B-1002-3 *	1" x 1/4"	0.71	18.0	0.24	6.0
SS304B-1003-3 *	SS316B-1003-3 *	1" x 3/8"	0.71	18.0	0.24	6.0
SS304B-1005 *	SS316B-1005 *	1" x 1/2"	0.71	18.0	0.24	6.0
SS304B-1007 *	SS316B-1007 *	1" x 3/4"	0.71	18.0	0.24	6.0
SS304B-1202-3 *	SS316B-1202-3 *	1-1/4" x 1/4"	0.81	20.5	0.26	6.5
SS304B-1203-3 *	SS316B-1203-3 *	1-1/4" x 3/8"	0.81	20.5	0.26	6.5
SS304B-1205-3 *	SS316B-1205-3 *	1-1/4" x 1/2"	0.81	20.5	0.26	6.5
SS304B-1207 *	SS316B-1207 *	1-1/4" x 3/4"	0.81	20.5	0.26	6.5
SS304B-1210 *	SS316B-1210 *	1-1/4" x 1"	0.81	20.5	0.26	6.5
SS304B-1505-3 *	SS316B-1505-3 *	1-1/2" x 1/2"	0.81	20.5	0.26	6.5
SS304B-1507-3 *	SS316B-1507-3 *	1-1/2" x 3/4"	0.81	20.5	0.26	6.5
SS304B-1510 *	SS316B-1510 *	1-1/2" x 1"	0.81	20.5	0.26	6.5
SS304B-1512 *	SS316B-1512 *	1-1/2" x 1-1/4"	0.81	20.5	0.26	6.5
SS304B-2005-3 *	SS316B-2005-3 *	2" x 1/2"	0.98	25.0	0.28	7.0
SS304B-2007-3 *	SS316B-2007-3 *	2" x 3/4"	0.98	25.0	0.28	7.0
SS304B-2010-3 *	SS316B-2010-3 *	2" x 1"	0.98	25.0	0.28	7.0
SS304B-2012 *	SS316B-2012 *	2" x 1-1/4"	0.98	25.0	0.28	7.0
SS304B-2015 *	SS316B-2015 *	2" x 1-1/2"	0.98	25.0	0.28	7.0

BOSHART
INDUSTRIES

25 Whaley Avenue, PO Box 310, Milverton, ON CANADA N0K 1M0
Tel: 800-561-3164

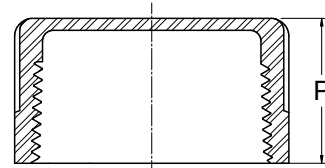
boshart.com ♦ blog.boshart.com

CLASS 150 LIGHT 304 / 316 STAINLESS FITTINGS - ISO 4144

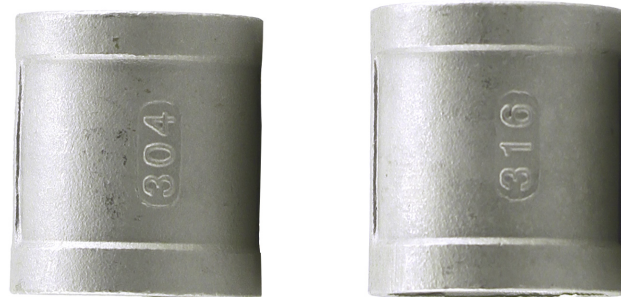
Cap - FPT



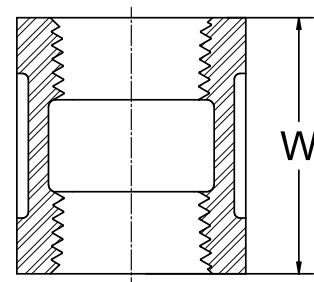
304SS	316SS	Size	P	
			Inches	mm
SS304CA-01	SS316CA-01	1/8"	0.49	12.5
SS304CA-02	SS316CA-02	1/4"	0.63	16.0
SS304CA-03	SS316CA-03	3/8"	0.65	16.5
SS304CA-05	SS316CA-05	1/2"	0.83	21.0
SS304CA-07	SS316CA-07	3/4"	0.89	22.5
SS304CA-10	SS316CA-10	1"	1.02	26.0
SS304CA-12	SS316CA-12	1-1/4"	1.14	29.0
SS304CA-15	SS316CA-15	1-1/2"	1.14	29.0
SS304CA-20	SS316CA-20	2"	1.32	33.5



Coupling - FPT

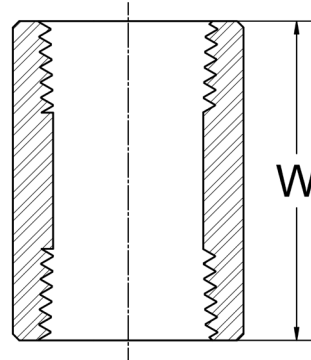


304SS	316SS	Size	W	
			Inches	mm
SS304C-01	SS316C-01	1/8"	0.67	17
SS304C-02	SS316C-02	1/4"	0.94	24
SS304C-03	SS316C-03	3/8"	0.98	25
SS304C-05	SS316C-05	1/2"	1.26	32
SS304C-07	SS316C-07	3/4"	1.38	35
SS304C-10	SS316C-10	1"	1.61	41
SS304C-12	SS316C-12	1-1/4"	1.77	45
SS304C-15	SS316C-15	1-1/2"	1.77	45
SS304C-20	SS316C-20	2"	2.13	54



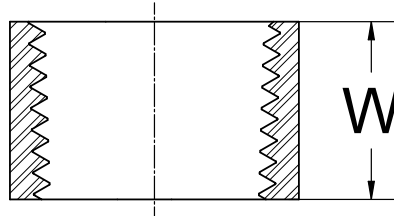
CLASS 150 LIGHT 304 / 316 STAINLESS FITTINGS - ISO 4144

Merchant Coupling - FPT



304SS	Size	W	
		Inches	mm
SS304MC-05	1/2"	1.26	32
SS304MC-07	3/4"	1.38	35
SS304MC-10	1"	1.61	41
SS304MC-12	1-1/4"	1.77	45
SS304MC-15	1-1/2"	1.77	45
SS304MC-20	2"	2.13	54

Merchant Half Coupling - FPT



304SS	Size	W	
		Inches	mm
SS304MHC-05	1/2"	0.59	15
SS304MHC-07	3/4"	0.65	16.5
SS304MHC-10	1"	0.77	19.5
SS304MHC-12	1-1/4"	0.85	21.5
SS304MHC-15	1-1/2"	0.85	21.5
SS304MHC-20	2"	1.02	26

BOSHART
INDUSTRIES

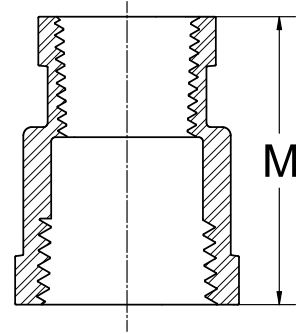
© 2020 Boshart Industries Inc. All Rights Reserved.

25 Whaley Avenue, PO Box 310, Milverton, ON CANADA N0K 1M0
Tel: 800-561-3164

boshart.com ♦ blog.boshart.com

CLASS 150 LIGHT 304 / 316 STAINLESS FITTINGS - ISO 4144

Reducing Coupling - FPT

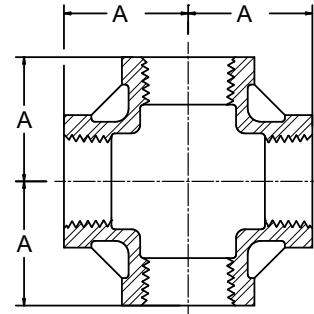


304SS	316SS	Size	M	
			Inches	mm
SS304RC-0201	SS316RC-0201	1/4" x 1/8"	0.98	25
SS304RC-0301	SS316RC-0301	3/8" x 1/8"	1.02	26
SS304RC-0302	SS316RC-0302	3/8" x 1/4"	1.02	26
SS304RC-0501-3	SS316RC-0501-3	1/2" x 1/8"	1.34	34
SS304RC-0502	SS316RC-0502	1/2" x 1/4"	1.34	34
SS304RC-0503	SS316RC-0503	1/2" x 3/8"	1.34	34
SS304RC-0702-3	SS316RC-0702-3	3/4" x 1/4"	1.42	36
SS304RC-0703	SS316RC-0703	3/4" x 3/8"	1.42	36
SS304RC-0705	SS316RC-0705	3/4" x 1/2"	1.42	36
SS304RC-1003-3	SS316RC-1003-3	1" x 3/8"	1.65	42
SS304RC-1005	SS316RC-1005	1" x 1/2"	1.65	42
SS304RC-1007	SS316RC-1007	1" x 3/4"	1.65	42
SS304RC-1205-3	SS316RC-1205-3	1-1/4" x 1/2"	1.89	48
SS304RC-1207	SS316RC-1207	1-1/4" x 3/4"	1.89	48
SS304RC-1210	SS316RC-1210	1-1/4" x 1"	1.89	48
SS304RC-1505-3	SS316RC-1505-3	1-1/2" x 1/2"	2.05	52
SS304RC-1507-3	SS316RC-1507-3	1-1/2" x 3/4"	2.05	52
SS304RC-1510	SS316RC-1510	1-1/2" x 1"	2.05	52
SS304RC-1512	SS316RC-1512	1-1/2" x 1-1/4"	2.05	52
SS304RC-2005-3	SS316RC-2005-3	2" x 1/2"	2.28	58
SS304RC-2007-3	SS316RC-2007-3	2" x 3/4"	2.28	58
SS304RC-2010-3	SS316RC-2010-3	2" x 1"	2.28	58
SS304RC-2012	SS316RC-2012	2" x 1-1/4"	2.28	58
SS304RC-2015	SS316RC-2015	2" x 1-1/2"	2.28	58

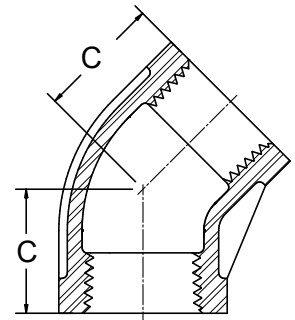
CLASS 150 LIGHT 304 / 316 STAINLESS FITTINGS - ISO 4144

Cross - FPT

304SS	Size	A	
		Inches	mm
SS304CR-01	1/8"	0.67	17
SS304CR-02	1/4"	0.75	19
SS304CR-03	3/8"	0.91	23
SS304CR-05	1/2"	1.06	27
SS304CR-07	3/4"	1.26	32
SS304CR-10	1"	1.50	38
SS304CR-12	1-1/4"	1.77	45
SS304CR-15	1-1/2"	1.89	48
SS304CR-20	2"	2.24	57



45° Elbow - FPT



304SS	316SS	Size	C	
			Inches	mm
SS304E4-01	SS316E4-01	1/8"	0.63	16
SS304E4-02	SS316E4-02	1/4"	0.67	17
SS304E4-03	SS316E4-03	3/8"	0.75	19
SS304E4-05	SS316E4-05	1/2"	0.83	21
SS304E4-07	SS316E4-07	3/4"	0.98	25
SS304E4-10	SS316E4-10	1"	1.14	29
SS304E4-12	SS316E4-12	1-1/4"	1.30	33
SS304E4-15	SS316E4-15	1-1/2"	1.46	37
SS304E4-20	SS316E4-20	2"	1.65	42

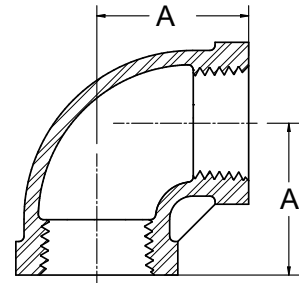
BOSHART
INDUSTRIES

25 Whaley Avenue, PO Box 310, Milverton, ON CANADA N0K 1M0
Tel: 800-561-3164

boshart.com ♦ blog.boshart.com

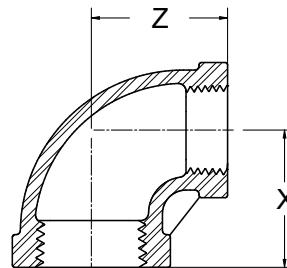
CLASS 150 LIGHT 304 / 316 STAINLESS FITTINGS - ISO 4144

90° Elbow - FPT



304SS	316SS	Size	A	
			Inches	mm
SS304E-01	SS316E-01	1/8"	0.67	17
SS304E-02	SS316E-02	1/4"	0.75	19
SS304E-03	SS316E-03	3/8"	0.91	23
SS304E-05	SS316E-05	1/2"	1.06	27
SS304E-07	SS316E-07	3/4"	1.26	32
SS304E-10	SS316E-10	1"	1.50	38
SS304E-12	SS316E-12	1-1/4"	1.77	45
SS304E-15	SS316E-15	1-1/2"	1.89	48
SS304E-20	SS316E-20	2"	2.24	57

Reducing Elbow - FPT



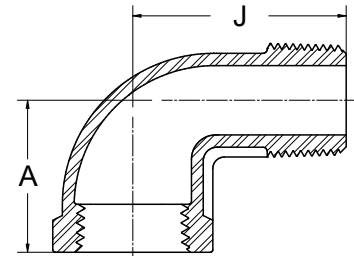
304SS	Size	X		Z	
		Inches	mm	Inches	mm
SS304RE-1210	1-1/4" x 1"	1.57	40	1.65	42

CLASS 150 LIGHT 304 / 316 STAINLESS FITTINGS - ISO 4144

90° Street Elbow - MPT x FPT



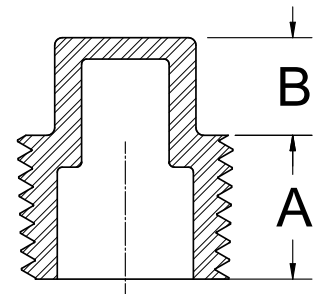
304SS	316SS	Size	A		J	
			Inches	mm	Inches	mm
SS304SE-01	SS316SE-01	1/8"	0.67	17	1.02	26
SS304SE-02	SS316SE-02	1/4"	0.75	19	1.06	27
SS304SE-03	SS316SE-03	3/8"	0.91	23	1.14	29
SS304SE-05	SS316SE-05	1/2"	1.06	27	1.38	35
SS304SE-07	SS316SE-07	3/4"	1.26	32	1.57	40
SS304SE-10	SS316SE-10	1"	1.50	38	1.81	46
SS304SE-12	SS316SE-12	1-1/4"	1.77	45	2.13	54
SS304SE-15	SS316SE-15	1-1/2"	1.89	48	2.24	57
SS304SE-20	SS316SE-20	2"	2.24	57	2.76	70



Plug - MPT Cored



304SS	316SS	Size	A		B	
			Inches	mm	Inches	mm
SS304P-01	SS316P-01	1/8"	0.24	6.0	0.20	5
SS304P-02	SS316P-02	1/4"	0.33	8.5	0.20	5
SS304P-03	SS316P-03	3/8"	0.35	9.0	0.24	6
SS304P-05	SS316P-05	1/2"	0.45	11.5	0.28	7
SS304P-07	SS316P-07	3/4"	0.51	13.0	0.31	8
SS304P-10	SS316P-10	1"	0.57	14.5	0.43	11
SS304P-12	SS316P-12	1-1/4"	0.67	17.0	0.43	11
SS304P-15	SS316P-15	1-1/2"	0.67	17.0	0.47	12
SS304P-20	SS316P-20	2"	0.85	21.5	0.51	13



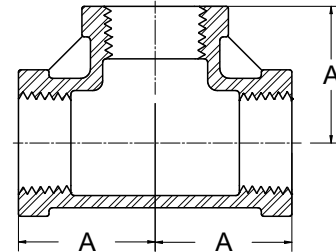
BOSHART
INDUSTRIES

25 Whaley Avenue, PO Box 310, Milverton, ON CANADA N0K 1M0
Tel: 800-561-3164

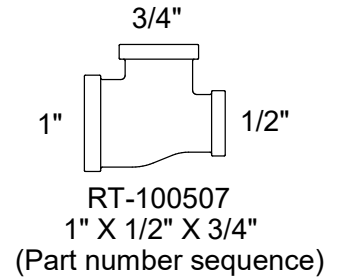
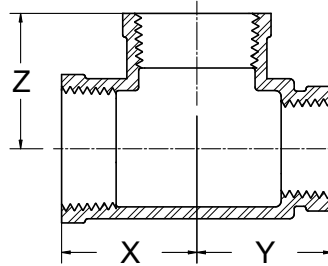
boshart.com ♦ blog.boshart.com

Tee - FPT

304SS	316SS	Size	A	
			Inches	mm
SS304T-01	SS316T-01	1/8"	0.67	17
SS304T-02	SS316T-02	1/4"	0.75	19
SS304T-03	SS316T-03	3/8"	0.91	23
SS304T-05	SS316T-05	1/2"	1.06	27
SS304T-07	SS316T-07	3/4"	1.26	32
SS304T-10	SS316T-10	1"	1.50	38
SS304T-12	SS316T-12	1-1/4"	1.77	45
SS304T-15	SS316T-15	1-1/2"	1.89	48
SS304T-20	SS316T-20	2"	2.24	57



Reducing Tee - FPT



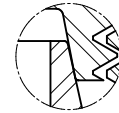
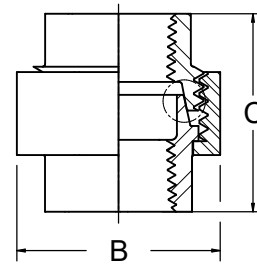
304SS	Size	X		Y		Z	
		Inches	mm	Inches	mm	Inches	mm
SS304RT-050502	1/2" x 1/2" x 1/4"	0.94	24	0.94	24	0.94	24
SS304RT-070507	3/4" x 1/2" x 3/4"	1.14	29	1.14	29	1.18	30
SS304RT-070702	3/4" x 3/4" x 1/4"	1.14	29	1.14	29	1.18	30
SS304RT-070705	3/4" x 3/4" x 1/2"	1.14	29	1.14	29	1.18	30
SS304RT-101005	1" x 1" x 1/2"	1.26	32	1.26	32	1.30	33
SS304RT-101007	1" x 1" x 3/4"	1.34	34	1.34	34	1.38	35
SS304RT-121207	1-1/4" x 1-1/4" x 3/4"	1.50	38	1.50	38	1.57	40
SS304RT-121210	1-1/4" x 1-1/4" x 1"	1.57	40	1.57	40	1.65	42
SS304RT-151507	1-1/2" x 1-1/2" x 3/4"	1.61	41	1.61	41	1.77	45
SS304RT-151510	1-1/2" x 1-1/2" x 1"	1.61	41	1.61	41	1.77	45
SS304RT-202007	2" x 2" x 3/4"	2.05	52	2.05	52	2.17	55
SS304RT-202010	2" x 2" x 1"	2.05	52	2.05	52	2.17	55

CLASS 150 LIGHT 304 / 316 STAINLESS FITTINGS - ISO 4144

Union - FPT



304SS	316SS	Size	C	
			Inches	mm
SS304U-01	SS316U-01	1/8"	1.18	30
SS304U-02	SS316U-02	1/4"	1.32	33.5
SS304U-03	SS316U-03	3/8"	1.44	36.5
SS304U-05	SS316U-05	1/2"	1.56	39.5
SS304U-07	SS316U-07	3/4"	1.67	42.5
SS304U-10	SS316U-10	1"	1.97	50
SS304U-12	SS316U-12	1-1/4"	2.13	54
SS304U-15	SS316U-15	1-1/2"	2.28	58
SS304U-20	SS316U-20	2"	2.56	65



DETAIL

Metal to metal sealing