

BOSHART INDUSTRIES

Pump & Well Accessories



COMMITTED TO EXCELLENCE



Dedicated
Sales Rep for
Your Area



97%
Fill
Rate



Shipping within
24 Hours



State of the
Art Warehouse
System



Technical
Support



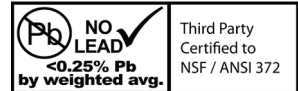
Quality Control
Program



RELIEF VALVES

NO LEAD HEAVY DUTY RELIEF VALVES

- Heavy duty cast No Lead Bronze body
- Stainless Steel Spring
- E.P.D.M. rubber sealing disc
- Available in sizes 1/2" MPT - 2" MPT
- Factory set at 65 or 75 PSI
- Cold water use only



RELIEF VALVES (NON-ADJUSTABLE)

- No Lead Brass, PVC or Stainless Steel
- Stainless Steel Spring and retaining screw
- Buna N sealing disc
- Available in sizes 1/2" MPT - 3/4" MPT
- Factory set at 75 PSI or 100PSI
- Cold water use only



NO LEAD SNIFTER (AIR/TANK) VALVES

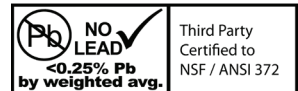
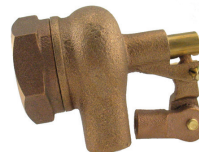
- Regular (60 PSI), light (3 PSI) and springless core options
- Available in 1/8" - 1/4" MPT



FLOAT VALVES

NO LEAD BRASS FLOAT VALVES

- Heavy duty body c/w Buna-N disc
- Sizes 3/8" - 1" threaded MPT outlet
- Sizes 1-1/4", 1-1/2" and 2" available in faucet outlet
- Bulkhead version in 1/2" and 3/4"
- Maximum operating temperature rating 180°F (82°C)
- Maximum operating pressure rating 125 PSI



PVC FLOAT VALVES

- PVC material
- Designed for low maintenance
- Factory pre-set to 75 PSI (adjustable to 150 PSI)
- High quality Stainless Steel Spring



FLOAT RODS

- Wide range of Stainless Steel Rods from 4-1/2' to 16' long



STAINLESS STEEL FLOATS

- 303 Stainless Steel
- Available with 1/4 - 20 SAE or 3/8 - 16 male thread



COPPER FLOATS

- Two float halves soldered together using an inside lapping joint
- For open tank service only
- Sizes 3" - 8" diameter

POLYPROPYLENE AND POLYETHYLENE FLOATS

- Corrosion resistant
- Lightweight
- For open tank service only
- Sizes 4.5" - 10" diameter



BLEEDER ORIFICES



- Will not corrode or stick
- Rapid opening and closing valve for submersible pumps
- Complete closure prevents loss of pumping volume
- 3/4" MPT No Lead Brass



- Non-corrosive bleeder
- Fast bleed through its large opening
- 1" MPT rubber

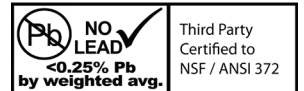


NOTE: bleeder orifices must be used in conjunction with deep well air releases.

AIR VOLUME CONTROLS



- Maintains proper air to water ratio in conventional pressure tanks
- 1-1/4" tank connection
- Housing is tapped with a 1/4" FPT pressure gauge port



SHALLOW WELL CONTROL AVC-SW

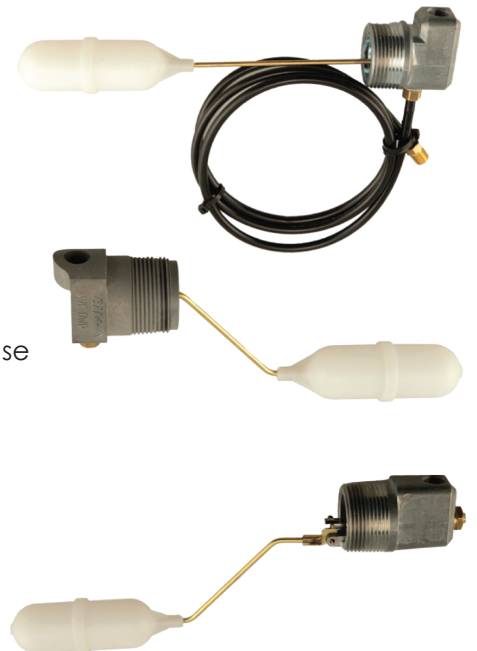
- Complete with 48" of 1/4" poly tubing and brass mini barb adapters
- Zinc die-cast housing with sealed plastic float mounted on solid brass rod

DEEP WELL AIR RELEASE AVC-DWP

- Durable plastic housing with sealed plastic float, stainless steel rod and hardware
- Designed for deep well submersible pump systems
- Used in conjunction with an air charging system, these controls release excess air from system to maintain the proper air to water ratio in conventional pressure tanks

DEEP WELL WITH ADJUSTABLE MINIMUM AIR RELEASE AVC-DW-AR

- Zinc die-cast housing with sealed plastic float, stainless steel rod and hardware
- Adjustable air release provides for setting minimum air release up to 40 PSI, factory set at 25 PSI
- Designed for deep well submersible pump systems
- Used in conjunction with an air charging system, these controls release excess air from system to maintain the proper air to water ratio in conventional pressure tank



NO LEAD FLOW CONTROLS



- Available in Inlet/Outlet sizes 3/8" - 3"
- Maintain a defined flow rate regardless of pressure variations of the supply line
- Nickel plated brass housing with an EPDM O-ring
- Max. temperature 150°F (65°C)
- Max. pressure 125 PSI



NO LEAD BRASS TANK TEES

- Available in solid or union styles
- 1" & 1-1/4" sizes available, in a variety of lengths
- Captive O-ring union design holds a North-American standard O-ring securely in a precision machined groove which prevents it from falling out and also provides protection against accidental damage when the union is disconnected
- 100% water tight seal easily made with hand tightening, only requires low torque with wrench to finish connection
- O-ring union design is very resistance to swiveling action and holds the tee head securely in position



NO LEAD BRASS WELLMATE TANK TEE

- Specially designed for WellMate "QC" Quick Connect Tank Series
- Alignment tabs interlock with tank connection to keep tee in perfect position
- Leg length allows replacement of pressure switch without hitting the tank



NO LEAD BRASS FEMALE TANK TEES

- Available in solid or union styles
- 1" or 1-1/4" FPT brass union nut c/w American Standard Buno-N ring for positive seal to any 1" or 1-1/4" MPT tank connection.
- These tank tees can be used with any tank on the market with a 1" or 1-1/4" male side connection.

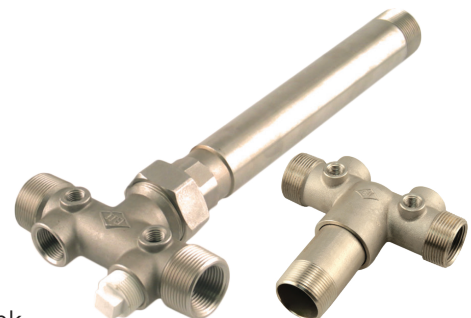


STAINLESS STEEL O-RING UNION TANK TEES

- 1" and 1-1/4" sizes available in a variety of lengths
- Heavy duty 304 stainless steel head casting
- 304 stainless steel Sch. 40 pipe nipple leg
- Provides high corrosion resistance
- American Standard BUNA N O-ring used to ensure watertight connection

NON-UNION STAINLESS STEEL TANK TEES

- 1" and 1-1/4" male tank connection in a variety of lengths
- 1" and 1-1/4" female tank connection in short pattern only
- Heavy duty 304 stainless steel head casting comes with permanently installed 304 stainless steel Sch. 40 pipe nipple leg
- Permanent hard setting thread sealant ensures a watertight connection, and secures nipple in tank tee head, it will not un-thread if the tank tee needs to be removed to replace a defective pressure tank.
- Provides high corrosion resistance



PVC TANK TEE

- PVC material
- One-piece molded
- Complies with ASTM Socket & ANSI Threaded Standards
- Recommended working pressure 145 PSI



MANIFOLDS



NO LEAD BRASS CONSTANT PRESSURE MANIFOLD

- 1-1/4" MPT x 1" FPT line connections for ease of installation
- Available with 3/4" or 1" FPT tank and transducer ports
- Two 3/4" FPT ports accommodate a relief valve and a hose bibb
- One 1/4" FPT port accommodates a 2" or 2-1/2" dial 1/4" MPT center back mount gauge



STAINLESS STEEL CONSTANT PRESSURE MANIFOLD

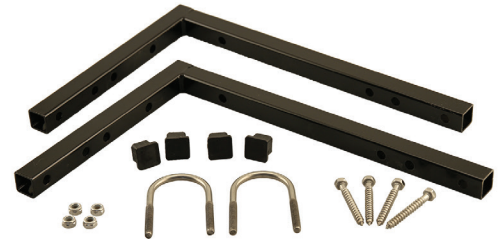
- Available with 1-1/4" MPT x 1" FPT or 2" MPT x 1-1/2" FPT line connection
- 1" FPT tank and transducer ports can be bushed down to 3/4"
- Two 3/4" FPT ports accommodate a relief valve and a hose bibb
- One 1/4" FPT port accommodates a 2" or 2-1/2" dial 1/4" MPT center back mount gauge

MANIFOLD BRACKET



TWO PIECE MOUNTING BRACKET KIT

- Black powder coated brackets complete with stainless steel hardware
- Universal brackets can be installed anywhere a solid mounting structure exists
- Interchangeable to allow for two different mounting positions



BRASS TANK TEE/MANIFOLD ACCESSORIES - UNION CONNECTIONS

- Union connectors for easy installation of inlet line (pump) and discharge (house)
- Insert, pex and solder connections available. The solder connection is designed for 1" copper pipe (external) 3/4" copper pipe (internal)
- American Standard BUNA N O-ring used to ensure watertight connection



TANK TEE PACKAGES



- NO LEAD BRASS TANK TEE PACKAGES
- NO LEAD BRASS CONSTANT PRESSURE MANIFOLD PACKAGES
- STAINLESS TANK TEE PACKAGES
- STAINLESS STEEL CONSTANT PRESSURE MANIFOLD PACKAGES

- All the above available in a variety of configurations, tanks not included

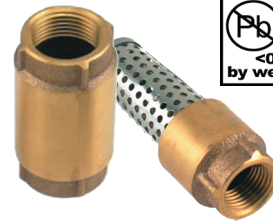




CHECK & FOOT VALVES

NO LEAD BRASS / BRONZE CHECK & FOOT VALVES

- Available in cast bronze or cast brass body and poppet
- NBR O-Ring Seal (Nitrile Buna-N)
- Available sizes 1/2" through 4" No Lead Brass
- Available sizes 1/2" through 3" No Lead Bronze
- Control centre check valves available in sizes 1" - 2" No Lead Brass



STAINLESS STEEL CHECK & FOOT VALVES

- #304 stainless steel body
- #304 stainless steel poppet
- Viton O-Ring seal
- Available sizes 1/2" through 4" FPT

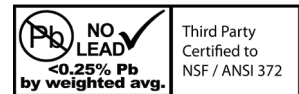
'SEAL WELL' PVC CHECK & FOOT VALVES

- One piece "Extra Heavy Duty" valve body molded from rigid PVC, listed under NSF61 & NSF14 (ASTM D-1784) provides superior tensile strength
- FPT threads to ASME /ANSI B 1.20.1 specifications
- NBR sealing gasket ensures a positive seal
- Flow diverter minimizes turbulence and friction loss
- Stainless steel spring closes valve against pressure, eliminating flow reversal & minimizing hydraulic shock
- Stemless acetal poppet guide for long-lasting, quiet, trouble free operation in both vertical and horizontal installations.
- Available sizes 3/4" - 2"

Quality Canadian Made



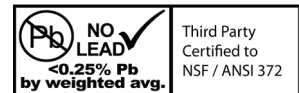
by Boshart Industries



'SEAL WELL' PVC FOOT VALVES ALSO FEATURE

- Polypropylene screen with high open area ensures flow is not restricted.
- Small holes prevent flat pieces of debris/scale from passing thru and into the pumps impeller, a common problem with slotted type screens.
- Tapered screen with rounded nose cone prevents hang-ups on casing during installation.
- 2 in 1 insert barb and 4 in 1 MPT thread models available

VARIABLE-FREQUENCY DRIVE CHECK VALVE - 80DI-VFD



- For use with variable-frequency drive (VFD) control pumps
- Designed to minimize flow losses and hydraulic shocks
- The poppet system insures that the valve smoothly and automatically adjusts to flow
- Designed for vertical or horizontal applications
- High strength epoxy coated ductile iron body and poppet
- Stainless steel guide with threaded female x female 8 round connection
- Nitrile (Buna-N) seal, stainless steel spring fasteners
- Max. Temperature 180°F (80°C)
- Max. Pressure
 - 2" - 3" 400 PSI
 - 4" - 8" 600 PSI



BII PITLESS ADAPTERS



NO LEAD BRONZE PITLESS ADAPTERS

- Outer gasket is designed to form to the curvature of the brass compression washer allowing the adapter to seal easily
- O-ring size included on the side of the elbow for easy reference
- Fits well casing with 5" -12" diameters
- Meets with Water Systems Council (WSC) PAS-97 standards
- Available in sizes 1", 1-1/4" & 2"
- Available in pressurized option
- Available with extension for concrete tile



LISTED PAS-97 (2012)



STAINLESS STEEL PITLESS ADAPTERS

- #304 stainless steel
- Large gasket for more efficient sealing on casing
- Chamfered slide for easy installation
- Investment cast to ensure top quality castings
- Fits well casing with 5" -12" diameters
- Easily supports 6000 lbs.
- Meets with Water Systems Council (WSC) PAS-97 standards
- Available in sizes 1", 1-1/4", 1-1/2" & 2"

DOUBLE DROP PIPE PITLESS ADAPTER

- Ideal for use with deep well jet pumps
- Provides fast installation and removal for servicing two pipe systems
- Fits well casing with 4" -12" diameters
- Meets with Water Systems Council (WSC) PAS-97 standards
- 1" x 1-1/4" double drop pipe

Industrial Pool Type Pitless Available, contact your Rep for more information.

BII CONDUIT & PLAIN WELL CAPS



WCC SERIES ALUMINUM CONDUIT CAPS

- Heavy duty design for added durability
- Designed to provide extra clearance for pump cable
- Three stainless steel set screws for secure fit to well casing
- One stainless steel set screw to secure conduit pipe
- A well log is provided inside each cap to record installation data/specifications



WCCL SERIES ALUMINUM LOCKING CONDUIT CAPS

- Stainless steel set screws
- Locking feature provides a secure/tamper-proof installation

CC SERIES CAST IRON CONDUIT CAPS

- Heavy cast iron construction
- Quick installation
- Blue painted finish
- Packaged individually

WCP SERIES ALUMINUM PLAIN CAPS

- Heavy duty design for added durability
- Uses three stainless steel set screws for secure fit to well casing
- A well log is provided inside each cap to record installation data/specifications





BII WATERTIGHT WELL CAPS

WTC SERIES WATERTIGHT WELL CAPS - FOR STEEL OR PVC WELL CASING

- Easy to install, easy access for maintenance
- Vermin proof with large screened air vents
- Greater clearance for submersible pump cable
- Stainless steel hardware
- O-ring system ensures reliable watertight seal between well casing and retainer ring
- A second O-ring is used to seal cover and retainer ring, a positive compression seal is achieved by tightening 4 bolts
- Grounding terminal with bolt provided
- A well log is provided inside each cap to record installation data/specifications



LISTED PAS-97 (2012)

**6-5/8" OD Well Size Available
in Cast Iron or Aluminum**

WTC-G SERIES WATERTIGHT CAPS FOR PVC WELL CASING

- Same design as the above WTC Series but with exception that the lower ring is plastic which can be solvent welded directly to PVC well casing
- Durable UV stabilized, high impact ABS



WTMLC SERIES LOCKING WATERTIGHT WELL CAPS - FOR STEEL OR PVC WELL CASING

- Easy to install, easy access for maintenance
- Vermin proof with large screened air vents
- Stainless steel hardware
- O-ring system to ensure reliable seal to casing
- A second O-ring is used to seal cover and retainer ring, a positive compression seal is achieved by tightening a single set screw on a specially designed tapered surface ensuring a positive seal
- Locking feature provides a secure/tamper-proof installation
- Grounding terminal with bolt provided
- A well log is provided inside each cap to record installation data/specifications



8", 10", 12" WTCL-A SERIES BII ALUMINUM WATERTIGHT LOCKING WELL CAPS

- Easy to install, easy access for maintenance
- Vermin proof with large screened air vents
- Stainless steel hardware
- O-ring system to ensure reliable seal to casing
- A second O-ring is used to seal cover and retainer ring, a positive compression seal is achieved by tightening 6 bolts
- Locking feature provides a secure/tamper-proof installation
- Grounding terminal with bolt provided
- A well log is provided inside each cap to record installation data/specifications



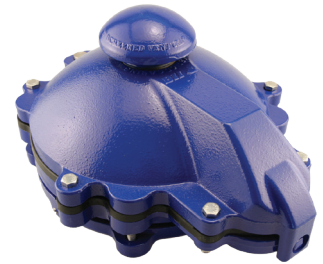
BII PREMIUM WATERTIGHT WELL CAPS **BII**

PREMIUM 8" WATERTIGHT CAST IRON LOCKING CAP - FOR STEEL OR PVC WELL CASING

- Absolutely the EASIEST & FASTEST heavy duty well cap to install, easy to access well for maintenance
- Only tools required are (2) 9/16" wrenches, (1) 5/32" Allen wrench
- Three piece heavy duty design, cast from high quality grey cast iron, with a durable blue powder coat paint, which is baked to ensure superior quality
- All fasteners are stainless steel for maximum corrosion resistance
- Thick soft SBR rubber gasket ensures a positive watertight compression seal to the well casing
- Large 2" FPT conduit connection provides lots of room for heavy gauge submersible pump cables
- Large 2" mushroom vent cap with stainless steel screen is included to ensure the cap is vermin proof
- Replacement of the vent with a standard 2" MPT plug quickly converts this vented well cap into a truly watertight cap where and when required
- Caps are supplied with a ground bolt and two tongue ring terminal connectors. Three stainless steel grounding set screws bond the well cap to the well casing (steel)
- Locking feature provides a secure / tamper proof design, simply insert a pad lock thru the stainless steel locking pin
- Personalization is available by means of an engraved aluminum plate which is affixed by drive rivets



LISTED PAS-97 (2012)



PREMIUM 10", 12", 14" WATERTIGHT CAST IRON CAP WITH SCREENED AIR VENT

- Provides easy access to the well without interfering with seal to casing or conduit and wiring
- Large 4" FPT conduit connection
- Locking feature provides a secure / tamper proof design
- Large dome vent cap with 60 mesh stainless steel screen
- Easily converts to 100% water proof design by replacing the vent with a plug
- Comes with 2 lockable accessory ports
- Caps are supplied with a grounding terminal and the metal cap is bonded to the steel casing with 3 set screws
- Two 1" FPT Ports are provided for field installation of accessories.
- Three piece heavy duty design
- High quality grey cast iron castings
- Durable blue powder coat paint, which is baked to ensure superior quality finish
- Thick heavy duty SBR gaskets
- All hardware is stainless steel for maximum corrosion resistance

*Personalized Name Plates Available
for ALL Well Caps*



'SEAL WELL' PLASTIC WELL SEALS

- Injection molded from U.V. Stabilized - High impact ABS
- Designed to ensure the fittings have clearance to the bolts, washers, nuts and conduit bushings
- Grommet kits come complete with both round and slotted gaskets for twisted or parallel pump cables, produced from very soft rubber which compresses easily when the conduit bushing is tightened
- Available in sizes 4" - 6-1/4"
- Soft, 3/4" thick solid rubber glands can be easily compressed when the bolts are tightened, ensuring a positive seal to the well casing, drop pipes and bolts
- All sizes incorporate a 1/2" vent complete with plug
- Also available in a blank well seal configurations

Quality Canadian Made



by Boshart Industries



Split Well Seal Design - Optional



Plastic Well Seal - Double Hole



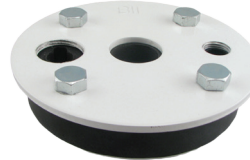
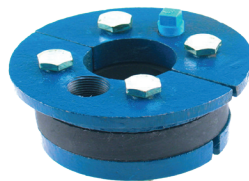
Plastic Well Seal - Single Hole

CAST IRON WELL SEAL

- Split top & bottom plate design
- Zinc plated bolts
- All sizes incorporate a 1/2" vent complete with plug
- Soft, 3/4" thick solid rubber glands can be easily compressed when the bolts are tightened, ensuring a positive seal to the well casing, drop pipes and bolts
- Grommet kits included on single drop pipe seals
- Available in sizes 2" - 6"

Available configurations:

- Single Drop Pipe - Submersible Pump
- Double Hole - Jet Pump
- Blank



STEEL WELL SEAL

- Solid, high strength steel plates made from A36 hot rolled steel
- Steel plates are powder coated for durable finish
- Zinc plated bolts
- Large pump cable / wire holes for easy installation
- Soft extra thick 1" rubber glands for positive sealing
- Custom seals available please call for pricing and delivery
- Available in sizes 4" - 12"

Available configurations:

- with Eye bolt

PVC WELL SEAL AIR VENTS

- Eight 0.04" slits, four on each side



GROMMET KITS

- Available in 3/4" & 1" wire hole sizes



GALVANIZED AIR VENTS

- Fabricated from 1/2" zinc plated steel pipe
- 40 mesh S.S. vermin proof screen included
- Use for water well ventilation
- Approximate overall dimensions: H=12-7/8" x W=7-3/4"



PUMP & WELL ACCESSORIES



HEAT SHRINK KITS

- "HS" Series 'Heavy Duty'
- "HSK" Series 'Fast Recovery'
- 3" - 48" lengths
- Clear & Black tubes
- Sizes 14AWG - 2AWG



TAPE & PIPE THREAD COMPOUND

- General Purpose Electrical Tape
- Cold Weather Tape
- Self Bonding Electrical Tape
- PTFE Thread Seal Tape for plumbing & specialty applications
- PVC Pipe Wrap
- Gray Magic Pipe Dope



'SEAL WELL' SUBMERSIBLE TORQUE ARRESTORS

- Injection molded from Thermo Plastic Elastomer (TPE) or Flexible Polyvinyl Chloride (PVC)
- Protects submersible pumps from starting torque damage
- Securely fasten to 1" or 1-1/4" drop pipe with the stainless steel clamps provided



TORQUE ARRESTOR "SPIDER"

- Fits drop pipe IPS 1" - 2"
- Casing size clearly marked on torques for ease of cutting to size
- Molded from strong Styrene Butadiene Rubber (SBR)



'SEAL WELL' CABLE GUARDS

- Tabs marked for 4", 5" or 6"
- Prevents cable from abrading against well casing
- Available in Snap-In and Self-Clamping models



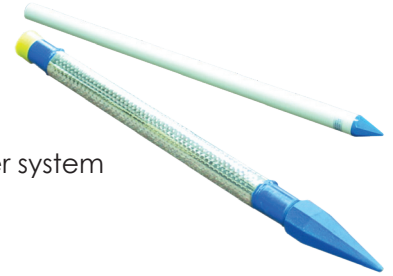
DROP PIPE COUPLINGS

- Machined using extruded PVC coupling stock
- Heavy duty construction 304 stainless steel



STAINLESS STEEL WELL POINTS

- Can be coupled together by removing the head, proper drive coupling is recommended
- Bronze MIG weld top and bottom
- Stainless steel screen with 1/8" staggered perforations
- Available in 60-80-100 mesh stainless steel gauze



PVC WELL POINTS

- Commonly used for small diameter shallow wells in residential, irrigation and water system
- Durable PVC pipe and rugged thermoplastic points

PIPE CUTTERS


- Durable cast metal body for many reliable straight cuts utilizing a smooth ratcheting action
- Latching handle for carrying in closed position
- High quality stainless steel blade (replacement blades available)
- Easily cuts through poly, PVC, ABS, pex, and CPVC pipe or conduit sizes up to 2"



1" PIPE CUTTER - PLASTIC HANDLE

- Cuts through 1" Poly, PVC, ABS, PEX, and CPVC pipe or conduit
- Durable nylon handle
- "Normally Open" spring action handle for ease of use
- Stainless Steel blade (replacement blades available)
- Latching handle for carrying in closed position





25 Whaley Ave., PO Box 310
Milverton, ON N0K 1M0
CANADA
Telephone: 519-595-4444
Fax: 519-595-4380
Toll Free: 800-561-3164

www.boshart.com

© 2018 Boshart Industries Inc. All Rights Reserved.

DISTRIBUTED BY:

BII-P&WA 05-2018 (B)